

BMP MODEL PACK™

- Up to 40" a second both opening and closing
- Photo eyes
- Simple Design
- Modular self-supporting frame
- Prewired control panel



AMBIENT AND COOLER DOOR SPECIFICATIONS:

Supply where indicated on plans Jamison BMP Model Pack for all temperatures from ambient to cooler.

Roll up door side frames and header to be standard galvanized steel.

Standard UL approved control panel to be a painted steel enclosure.

Standard opening and closing speed is up to 40" a second based on size.

Door curtain is made of reinforced PVC, with flexible weighted soft bottom edge.

The side frame and track system are made of galvanized steel. Instead of coiling around a drum, the belted opening system lifts and folds the panel. Both the system and the motor have galvanized covers.

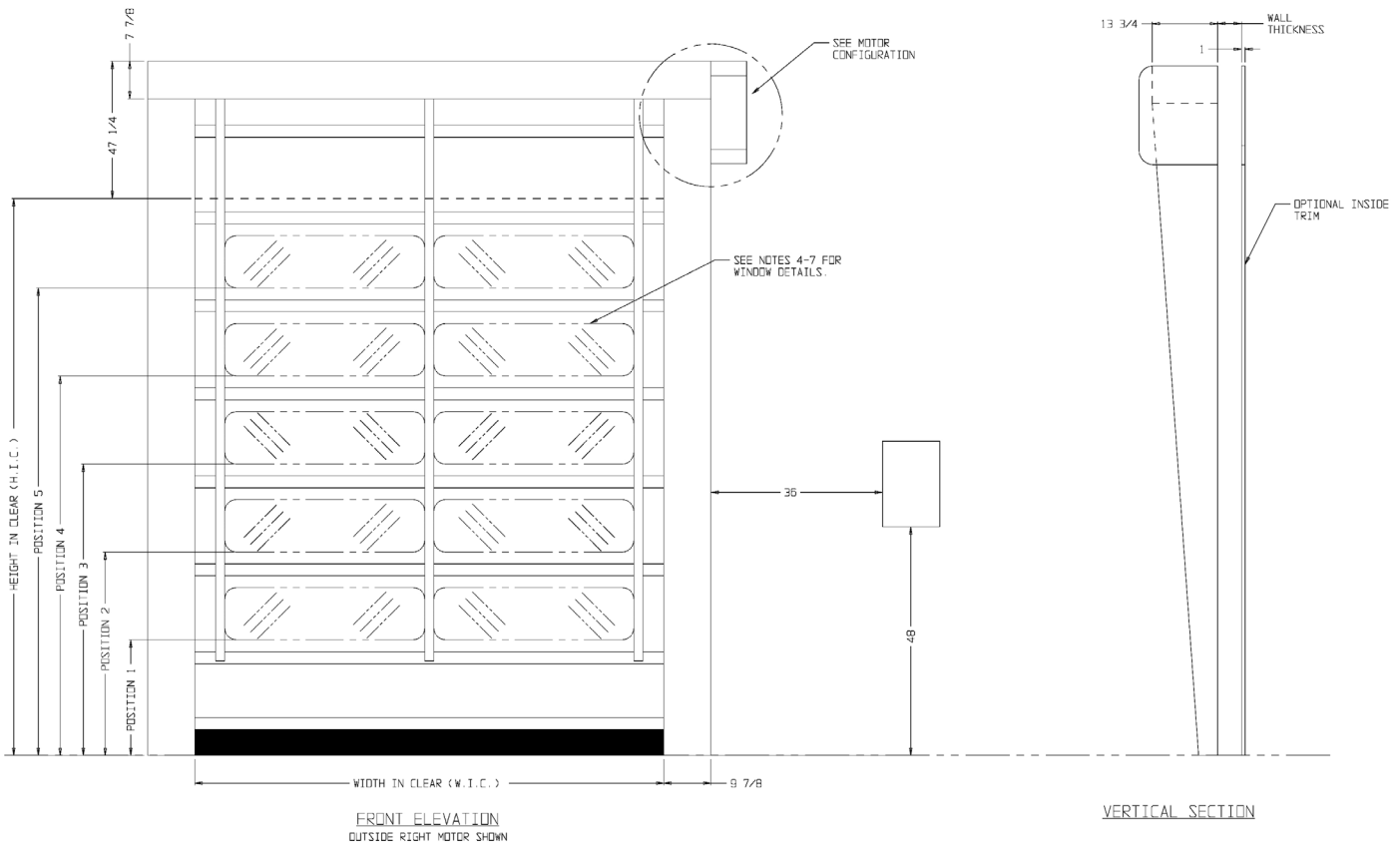
The standard motor is IP 54 2HP. The incremental encoder mounted is attached to the end of the drum shaft.

An infrared photocell NPN, IP67 is installed on the inside of the side guide and detects the presence of a pedestrian or vehicle.

Power to be 208, 230, or 460 volt AC, 60 Hertz, 3 phase. Circuit breakers to be provided by other. Complete door assembly to be ready for connection to power. (Architect to designate responsibility for field wiring.)

OPTIONS: (SPECIFY which options are desired)

1. Side frames, header, covers can be Stainless steel.
2. Control panel available in Stainless Nema 4x.
3. Control wiring prewired to control panel.
4. Wall attachment fastenings.
5. Activation devices.
6. View windows.



INSTALLATION POINTS:

1. Install roll up door, hardware, and electrical components in strict accordance with Architect's drawings and specifications and the door manufacturer's written instructions.
2. Complete installation, operating, and maintenance instructions shall be supplied for each door by manufacturer.
3. Manufacturer can furnish most types of installation hardware, such as: lag screws, machine bolts, carriage bolts or all thread. Trim, crush plates, and anchor bolts are also available.
4. Install side frames plumb and square, in correct locations indicated on drawings and with a maximum diagonal distortion of 1/4" over height of doorway. Ensure header is securely and rigidly anchored to adjacent construction.

JAMISON

Jamison Door Company • P.O. Box 70 • Hagerstown, MD 21741-0070
 Call Toll Free • 1-800-532-3667 or 301-733-3100
 FAX: 240-329-5155
 INTERNET: <http://www.jamisondoor.com>
 E-MAIL: contact@jamisondoor.com