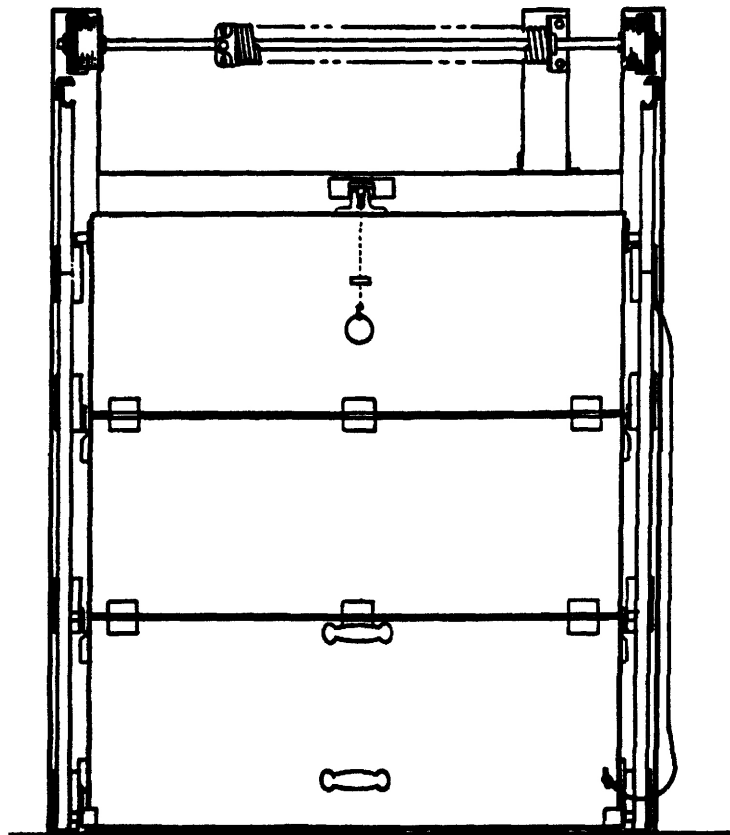


# JAMISON

## INSTALLATION INSTRUCTIONS FOR MARK IV MANUAL OVERHEAD DOOR

**AFTER INSTALLING DOOR FORWARD TO  
MAINTENANCE DEPARTMENT OR OWNER**



### ***JAMISON DOOR COMPANY***

P.O. BOX 70

HAGERSTOWN, MARYLAND 21741

USA

(1-800-532-3667)

INTERNET: <http://www.jamisondoor.com>

E-MAIL: [sales@jamisondoor.com](mailto:sales@jamisondoor.com)

## CONTENTS

GENERAL INFORMATION	3
MINIMUM CLEARANCE DIMENSIONS	4
COOLER FRAME INSTALLATION	5
FREEZER FRAME INSTALLATION	6
INSTALLING DOOR LEAVES	7
RADIUS TRACK INSTALLATION	8
TORSION SHAFT INSTALLATION	9
TORSION SPRING TENSIONING	10
FINAL CHECK OUT	11

## **GENERAL INFORMATION:**

### **A. Contents of Crates and Carton**

1. Frame component parts and assemblies shipped knocked-down.  
NOTE: If frame has jambs, casings and jambs shipped in separate crate.
2. One crate containing door leaves with all components parts and assemblies attached.
3. One carton containing:
  - a. Packing List
  - b. Installation Instructions

### **B. Inspect for Damage and **Shortage Immediately****

1. Note on all copies of delivery receipt any apparent damages and shortages.
2. Open all shipping containers and inspect for concealed damage and shortages. Carefully repack to prevent further damage and pilferage.
3. Report within 15 days in writing to the transportation company, with a copy to us, any concealed damage and shortages. After 15 days, the law permits the transportation company to reject all claims.

### **C. Handle All Parts Carefully**

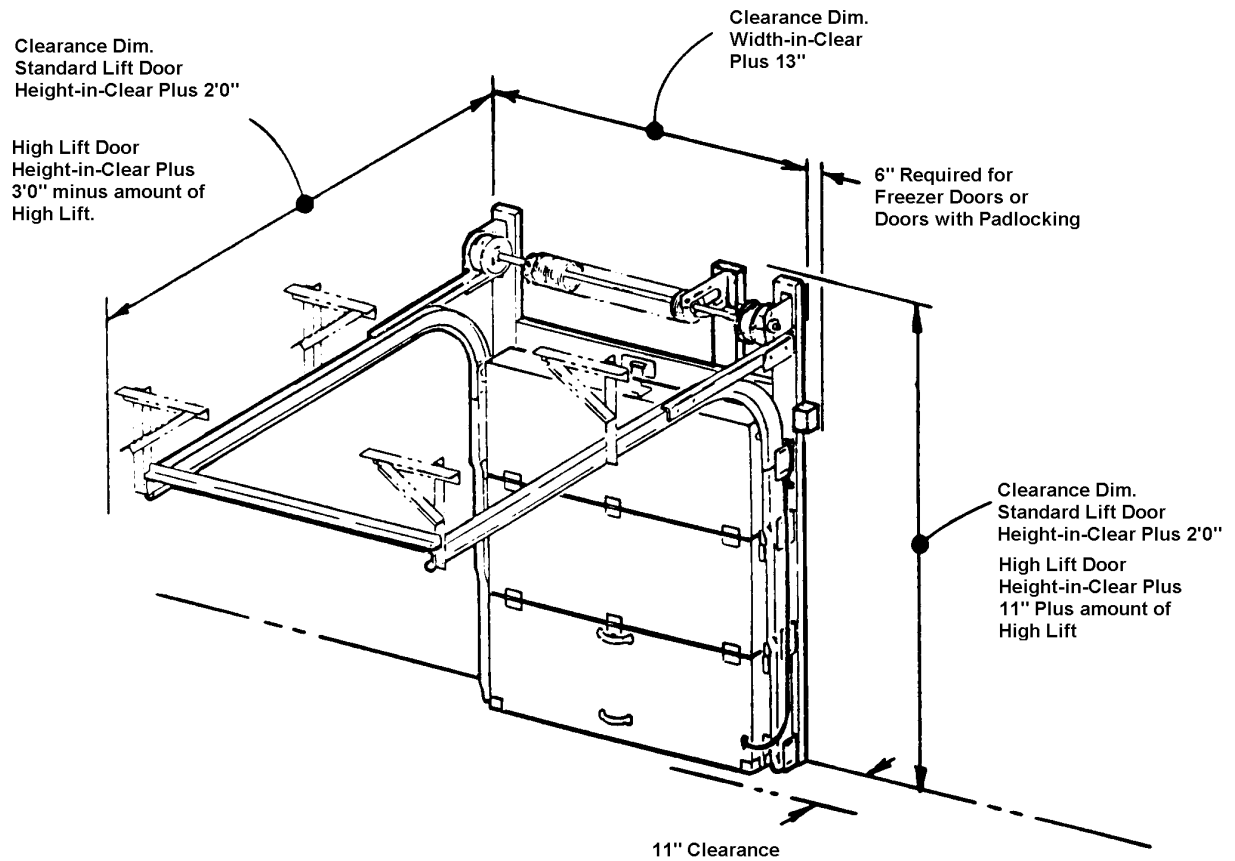
1. Certain parts such as gaskets, etc. are vulnerable.

### **D. READ ALL INSTRUCTIONS BEFORE PROCEEDING WITH ERECTION**

1. Instructions include basic drawings for all door types.
2. Use drawings applicable to your door.
3. Refer to job drawings for special features.

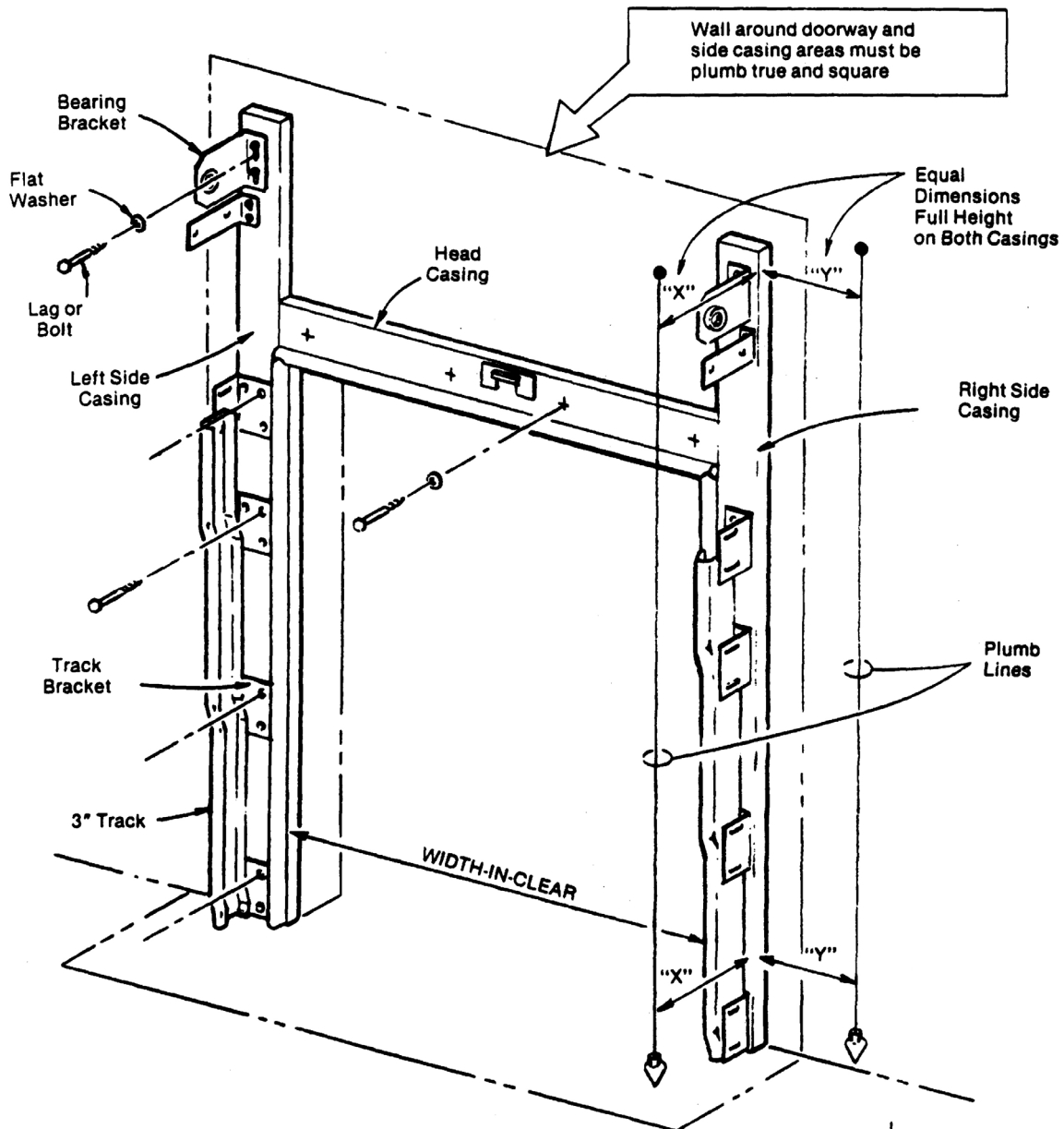
### **E. Plan Ahead**

1. Choose installers who are millwrights or have equal qualifications.
2. Have all tools and materials necessary for installation readily available.

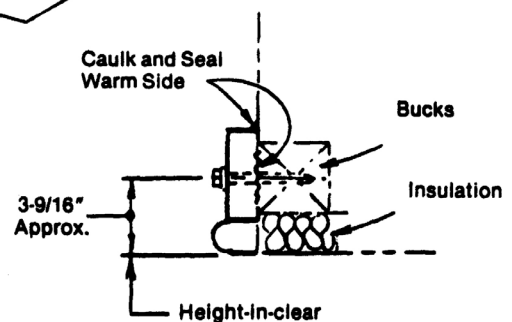


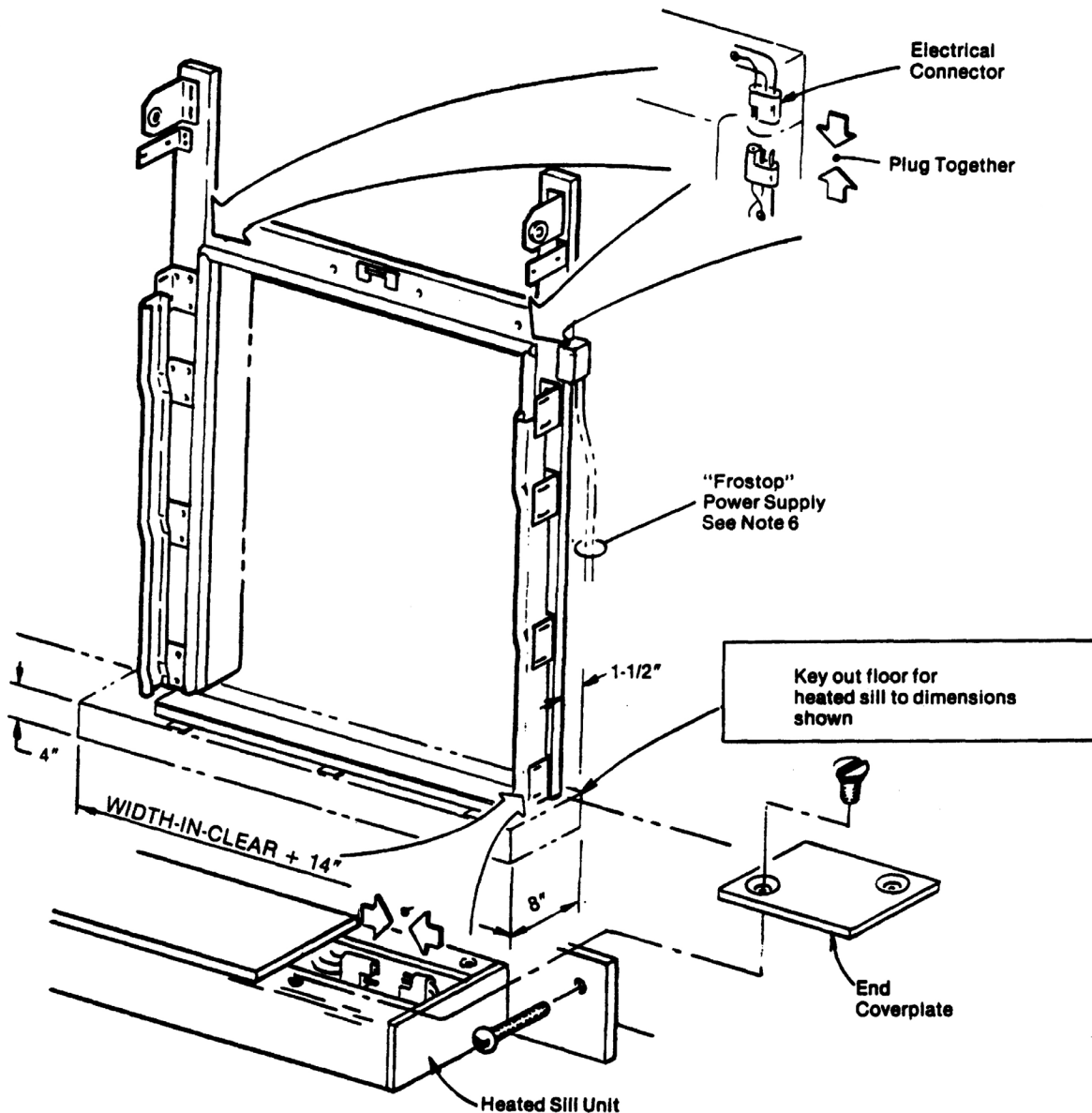
#### MANUAL DOOR CLEARANCE DIMENSIONS

For Power doors extra clearances are required. Contact Jamison for dimensions if power or future power is desired.

**STEPS:**

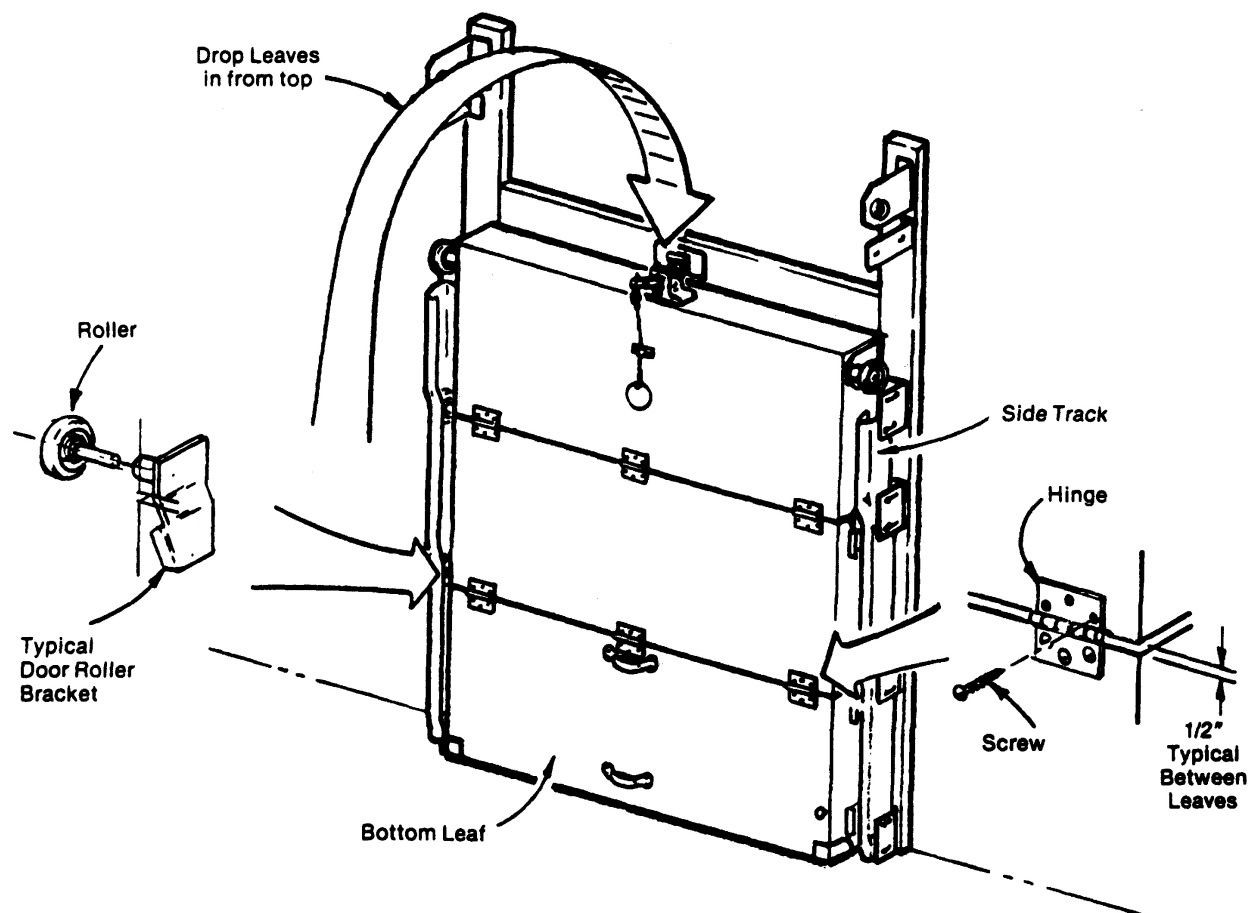
1. Floor through door opening must be true and level to within  $\pm 1/8"$ .
2. Caulk and Vapor Seal back, bottom, and around edges of each casing. Install first side casing at high side of opening, shim other side casing as required to maintain a level condition. Install head casing, plumb side casings, shim if required to obtain a true plane, attach casings through each track bracket and top bearing bracket as shown.

**COOLER DOOR FRAME ERECTION — SEE NEXT PAGE FOR FREEZER****TYPICAL SECTION**

**STEPS:**

1. Install frame same as cooler door-SEE PREVIOUS PAGE
2. Attach heated sill to side casings.
3. Plug together electrical connectors at four corners of frame as shown.
4. Install end coverplates, **caulk and seal to exclude moisture.**
5. Brace heated sill securely and grout in finished concrete floor around sill.
6. Connect 120 volt supply to frame junction box through lockable disconnect switch (not by Jamison) in accordance with the N.E.C. code.
7. Check for proper heating.

**FREEZER DOOR FRAME ERECTION — SEE PREVIOUS PAGE**

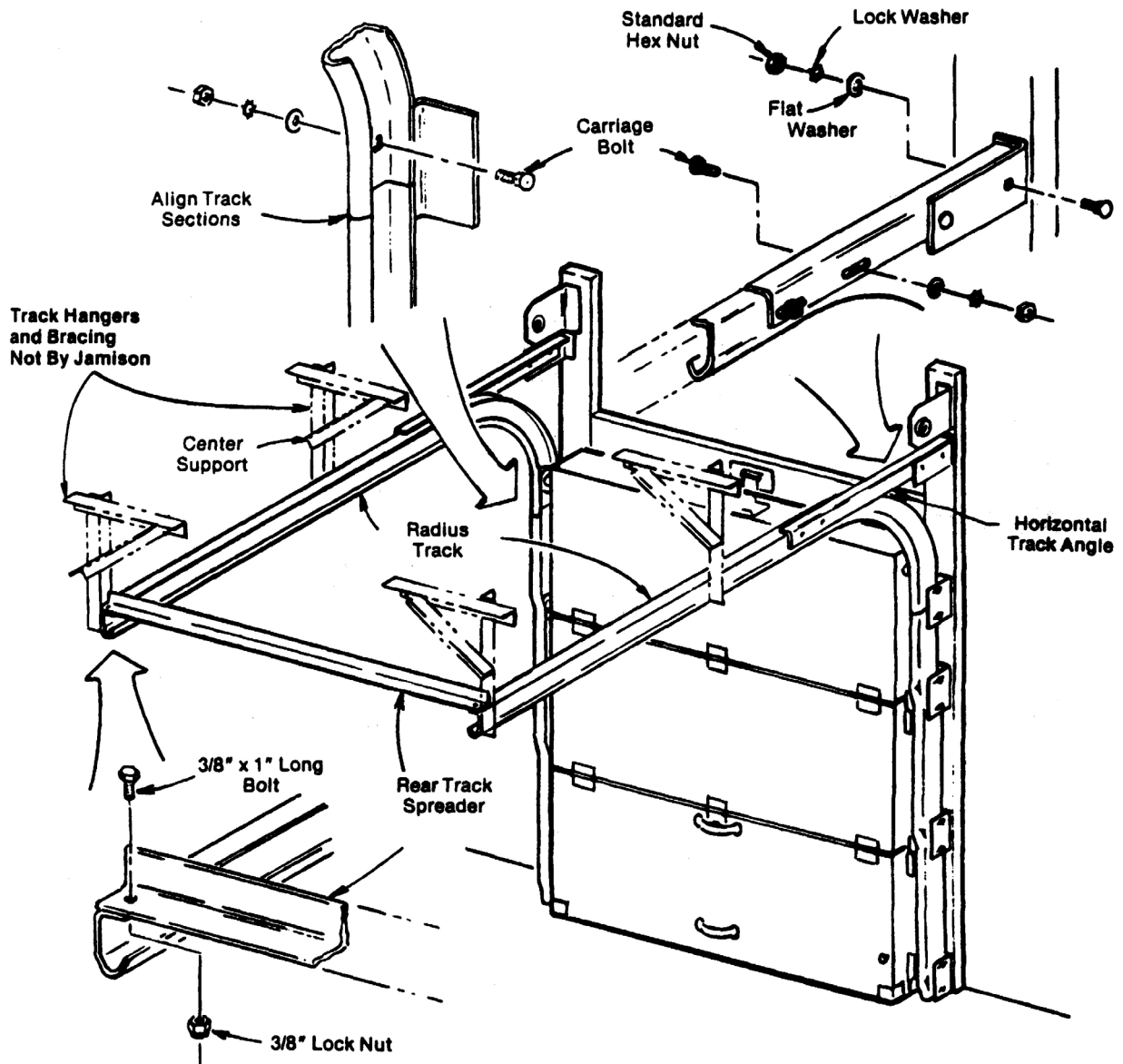


3-LEAF DOOR SHOWN - 4 OR 5 LEAF DOOR SIMILAR

**STEPS:**

1. Insert rollers into all door roller brackets.
2. Starting with the bottom leaf install leaves into tracks by lifting each leaf above side tracks and stacking into position.
3. Adjust gap between each leaf to approx. 1/2". Install screws into hinges.
4. Top leaf must be temporarily secured to prevent leaf from falling forward.

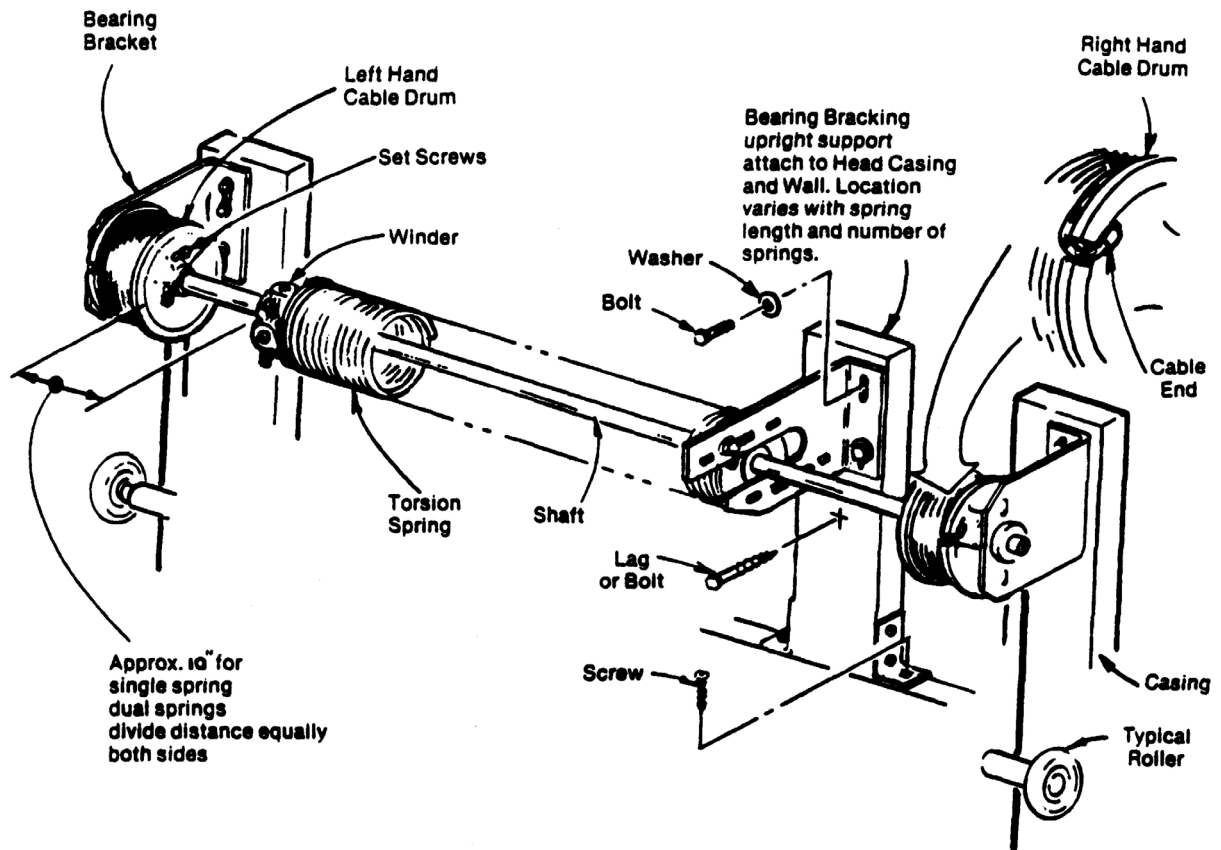
**INSTALLING DOOR LEAVES**

**STEPS:**

1. Assemble radius track sections as shown. Entire system must be installed level, true and square.
2. Securely attach horizontal track to adequate support structure by installing angled track hangers similar to the ones pictured, center track support is required on radius tracks over 8'-0". **TRACK SUPPORT BRACKETS NOT BY JAMISON.**
3. Adjust tracks to obtain 5/8" uniform gasket compression between door leaves and frame.

**RADIUS TRACK INSTALLATION**

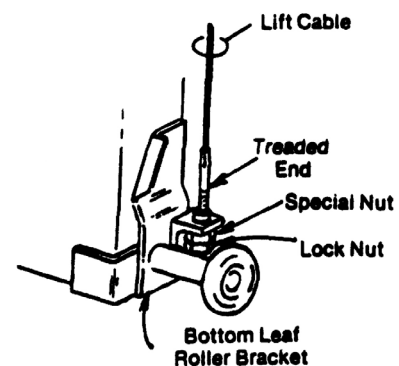


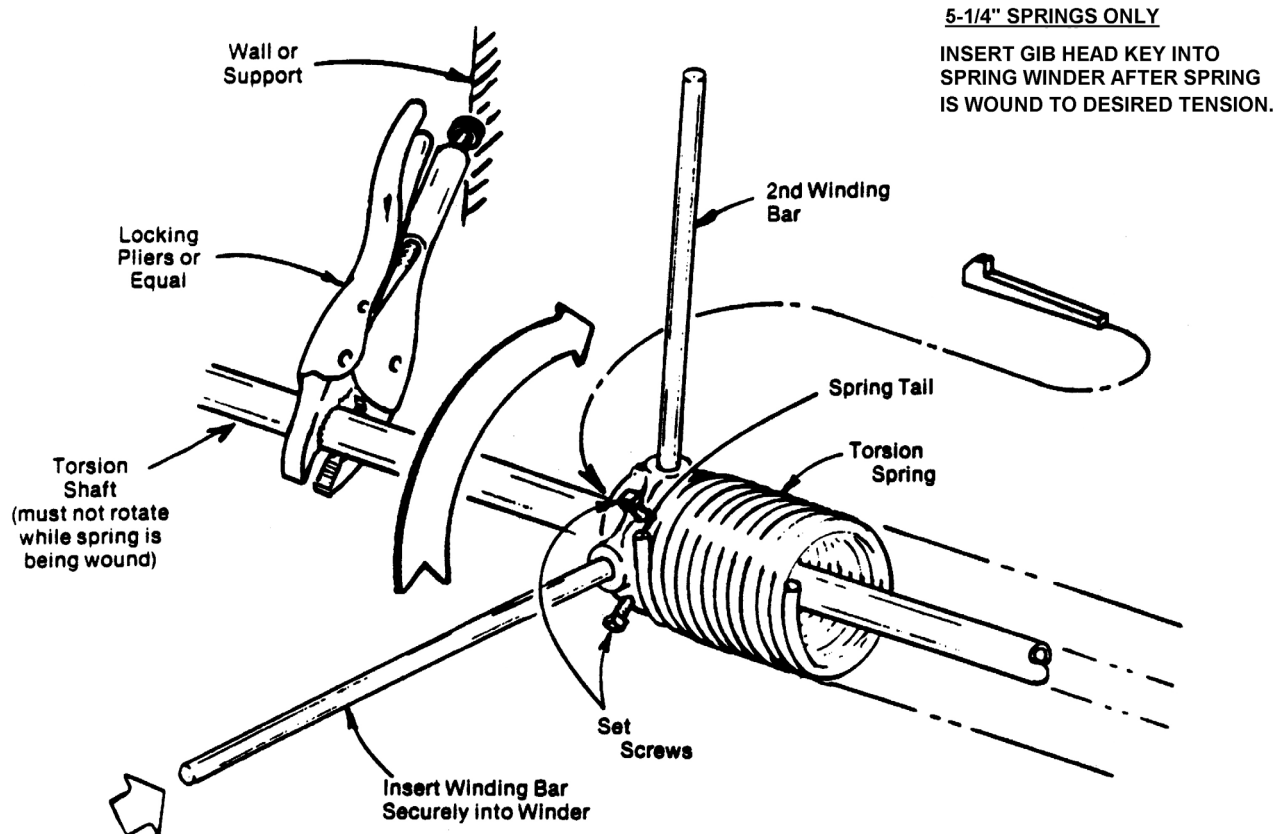


SINGLE SPRING ASSEMBLY SHOWN - DUAL SPRING ASSEMBLY SIMILAR

**STEPS:**

1. Install torsion spring assembly into bearing brackets as shown. Leave shaft extend an equal distance on each side. (See Note #4)
2. Slide left and right cable drums to within approx. 1/16" of bearing brackets.
3. Uncoil cables from bottom leaf and thread cable between door roller spindles and casing. Attach cable to drum as shown and wind cable onto drum so each side has an even tension and cable is taut. Tighten cable drum set screws securely to shaft approx. 19' lbs.

**TORSION SHAFT INSTALLATION**



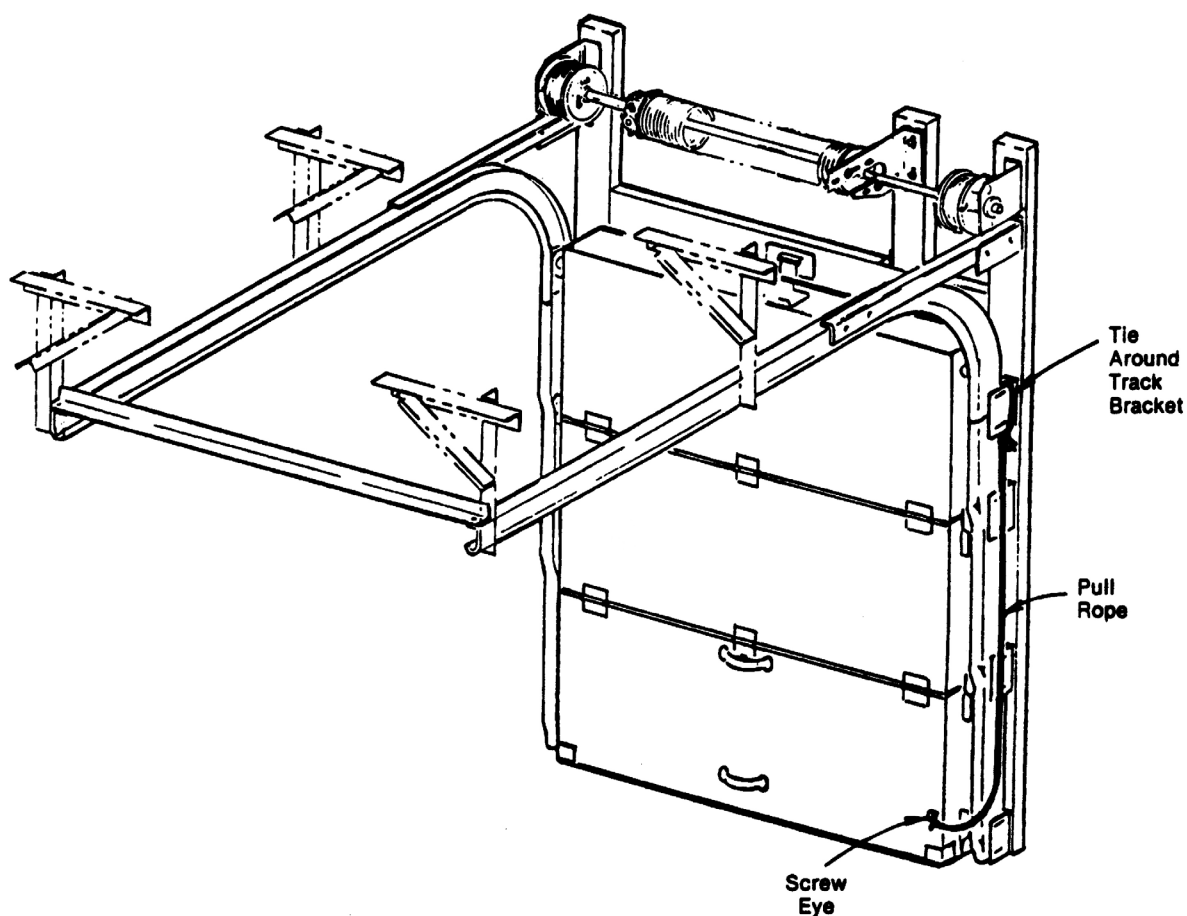
SINGLE SPRING SHOWN — DUAL SPRING SIMILAR

**CAUTIONS:** Winding of torsion Springs can be dangerous. Never stand in front of winding bars while winding springs. Make sure you have a secure footing. Never use undersized rods or other tools for winding springs.

**STEPS:**

1. Use locking pliers or equivalent means to prevent torsion shaft from rotating.
2. Insert winding rod fully into winder, rotate spring in the same direction as the spring tail points to increase tension (see illustration). Rotate 1st rod approx. 1/4 turn and insert 2nd rod. Repeat this procedure until desired number of turns are on spring. See tag for number of turns required. **TIGHTEN SET SCREWS.** Approx. 19' / lbs.
3. Check for proper operation, door should be counter-balanced during open and close cycles. Re-adjust if required. Securely tighten all set screws.

**TORSION SPRING TENSIONING**

**STEPS:**

1. Attach nylon pull rope to screw eye and track bracket as shown.
2. Lubricate all moving parts, including torsion springs, of hardware periodically (as frequently as required for friction free operation.)
3. Retighten all hardware and fastenings.
4. Check door for proper operation and gasket seal and make any adjustments as necessary.

**FINAL CHECK-OUT**