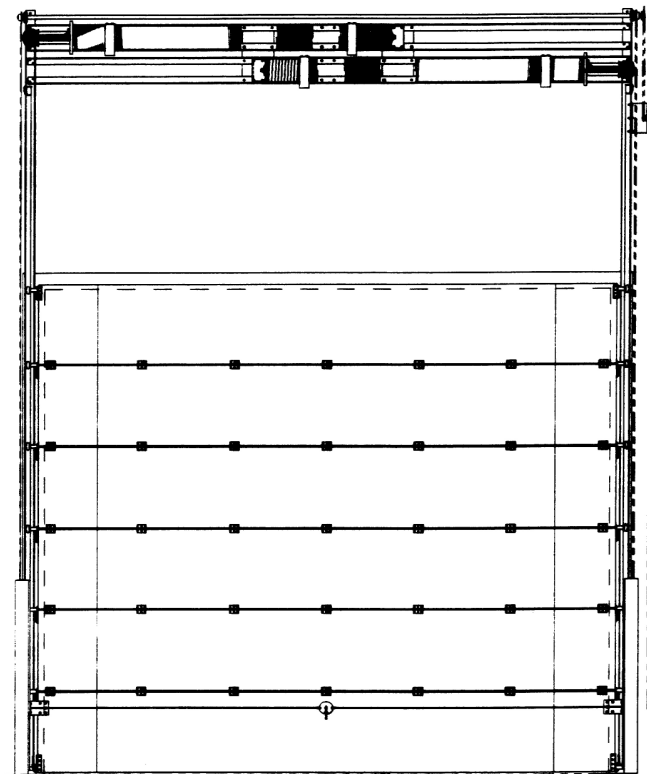


# JAMISON

## INSTALLATION INSTRUCTIONS FOR MARK IV OVERHEAD HIGHLIFT MANUAL WITH CHAINFALL OPERATOR

AFTER INSTALLING DOOR FORWARD TO  
MAINTENANCE DEPARTMENT OR OWNER



### **JAMISON DOOR COMPANY**

P.O. BOX 70  
HAGERSTOWN, MARYLAND 21741  
USA

(1-800-532-3667)

INTERNET: <http://www.jamisondoor.com>

E-MAIL: [sales@jamisondoor.com](mailto:sales@jamisondoor.com)

## **Contents**

	<b>PAGE</b>
GENERAL INFORMATION	3
FRAME ERECTING	4
TORSION SPRING MOUNTING ANGLE INSTALLATION	5
TORSION SPRING MOUNTING	6
INSTALLING HORIZONTAL TRACK ANGLE	7
BOTTOM DOOR LEAF INSTALLATION	8
UPPER DOOR LEAVES INSTALLATION	9
RADIUS TRACK INSTALLATION	10
LIFTING CABLE ATTACHMENT	11
SIDE LIFTING CHAIN ATTACHMENT	12
MANUAL CHAIN HOIST ATTACHMENT	13
TORSION SPRING TENSIONING	14
GASKET ADJUSTMENT	15

## GENERAL INFORMATION:

### **A. CONTENTS OF CRATES AND CARTON**

1. FRAME COMPONENT PARTS AND ASSEMBLIES SHIPPED KNOCKED-DOWN.  
NOTE: IF FRAME HAS JAMBS, CASING AND JAMBS ARE SHIPPED IN SEPARATE CRATE.
2. ONE CRATE CONTAINING DOOR LEAVES WITH ALL COMPONENTS PARTS AND ASSEMBLIES ATTACHED.
3. ONE CARTON CONTAINING:
  - a. PACKING LIST ITEMS
  - b. INSTALLATION INSTRUCTIONS

### **B. INSPECT FOR DAMAGE AND SHORTAGE IMMEDIATELY**

1. NOTE ON ALL COPIES OF DELIVERY RECEIPT ANY APPARENT DAMAGES AND SHORTAGES.
2. OPEN ALL SHIPPING CONTAINERS AND INSPECT FOR CONCEALED DAMAGES AND SHORTAGES. CAREFULLY REPACK TO PREVENT FURTHER DAMAGE AND PILFERAGE.
3. REPORT **WITHIN 15 DAYS** IN WRITING TO TRANSPORTATION COMPANY, WITH A COPY TO JAMISON DOOR, ANY CONCEALED DAMAGE AND SHORTAGES. AFTER 15 DAYS, LAWS PERMIT THE TRANSPORTATION COMPANY TO REJECT ALL CLAIMS.

### **C. HANDLE ALL PARTS CAREFULLY**

1. CERTAIN PARTS SUCH AS GASKET, ETC. ARE VULNERABLE.

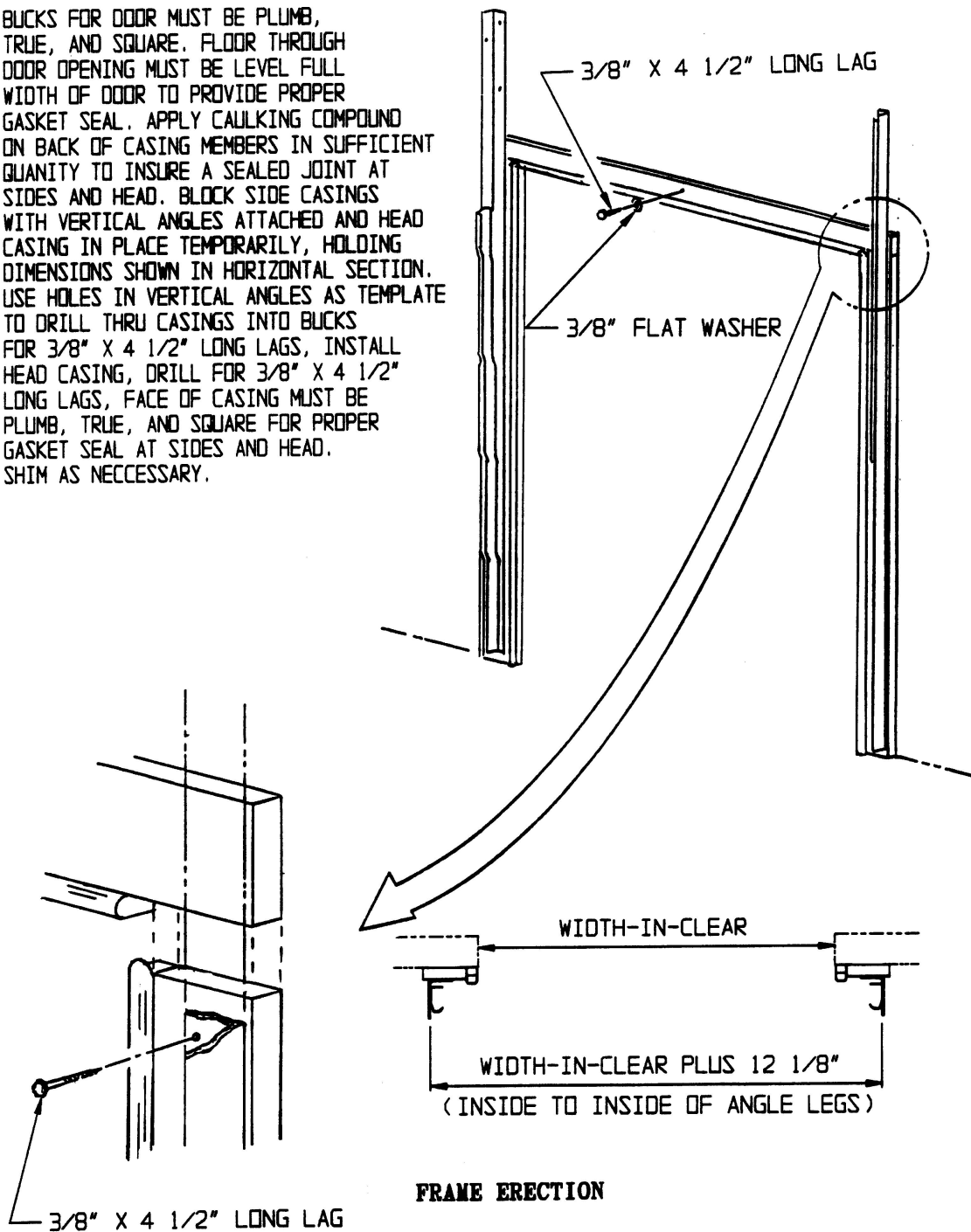
### **D. READ ALL INSTRUCTIONS BEFORE PROCEEDING WITH INSTALLATION**

1. INSTRUCTIONS INCLUDE BASIC DRAWINGS FOR ALL DOORS TYPES.
2. USE DRAWINGS APPLICABLE TO YOUR DOOR.
3. REFER TO JOB DRAWINGS FOR SPECIAL FEATURES.

### **E. PLAN AHEAD**

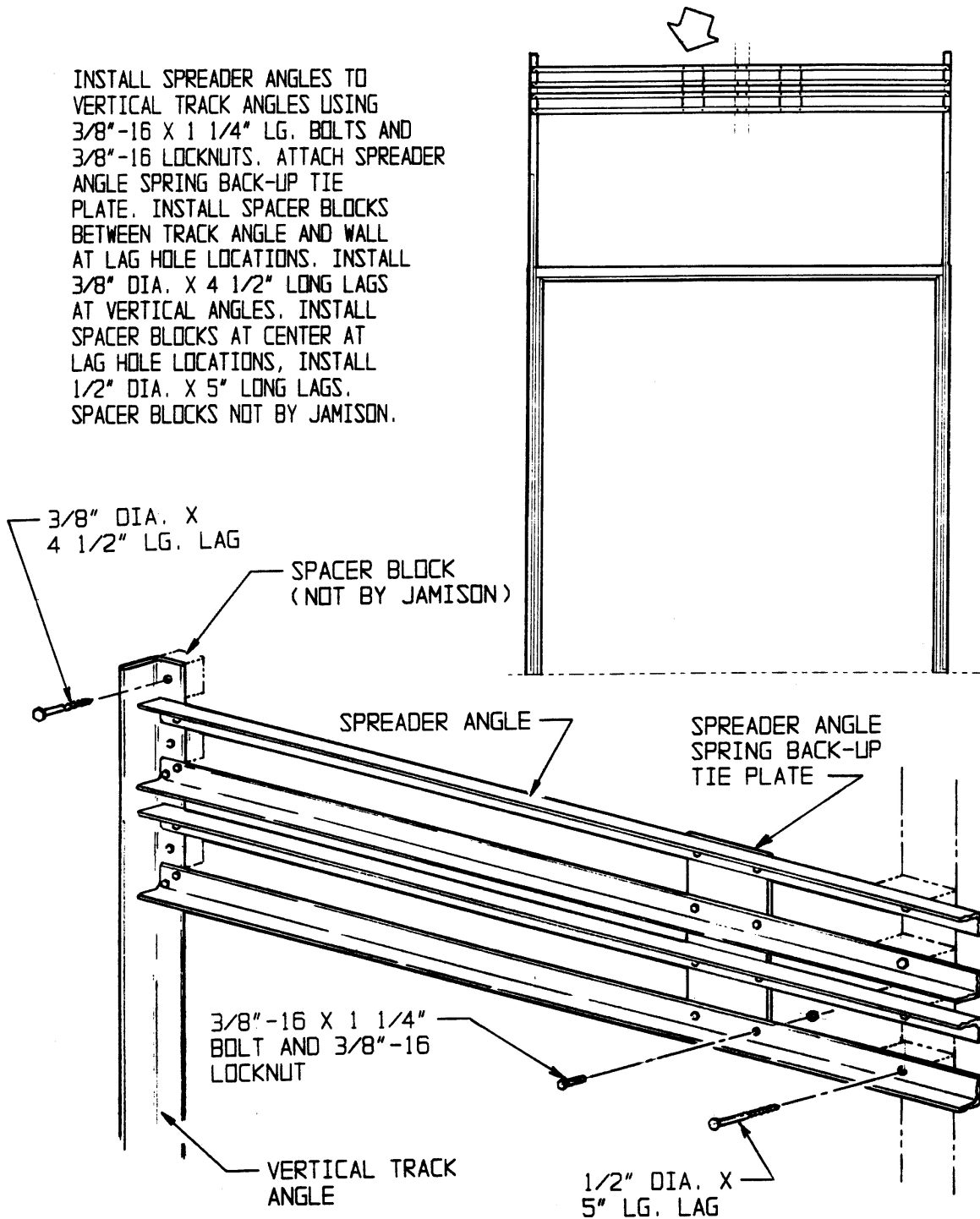
1. CHOOSE INSTALLERS WHO ARE MILLWRIGHTS OR HAVE EQUAL QUALIFICATIONS.
2. HAVE ALL TOOLS AND MATERIALS FOR INSTALLATION READILY AVAILABLE.

BUCKS FOR DOOR MUST BE PLUMB, TRUE, AND SQUARE. FLOOR THROUGH DOOR OPENING MUST BE LEVEL FULL WIDTH OF DOOR TO PROVIDE PROPER GASKET SEAL. APPLY CAULKING COMPOUND ON BACK OF CASING MEMBERS IN SUFFICIENT QUANTITY TO INSURE A SEALED JOINT AT SIDES AND HEAD. BLOCK SIDE CASINGS WITH VERTICAL ANGLES ATTACHED AND HEAD CASING IN PLACE TEMPORARILY, HOLDING DIMENSIONS SHOWN IN HORIZONTAL SECTION. USE HOLES IN VERTICAL ANGLES AS TEMPLATE TO DRILL THRU CASINGS INTO BUCKS FOR 3/8" X 4 1/2" LONG LAGS, INSTALL HEAD CASING, DRILL FOR 3/8" X 4 1/2" LONG LAGS, FACE OF CASING MUST BE PLUMB, TRUE, AND SQUARE FOR PROPER GASKET SEAL AT SIDES AND HEAD. SHIM AS NECESSARY.





INSTALL SPREADER ANGLES TO VERTICAL TRACK ANGLES USING 3/8"-16 X 1 1/4" LG. BOLTS AND 3/8"-16 LOCKNUTS. ATTACH SPREADER ANGLE SPRING BACK-UP TIE PLATE. INSTALL SPACER BLOCKS BETWEEN TRACK ANGLE AND WALL AT LAG HOLE LOCATIONS. INSTALL 3/8" DIA. X 4 1/2" LONG LAGS AT VERTICAL ANGLES. INSTALL SPACER BLOCKS AT CENTER AT LAG HOLE LOCATIONS, INSTALL 1/2" DIA. X 5" LONG LAGS. SPACER BLOCKS NOT BY JAMISON.



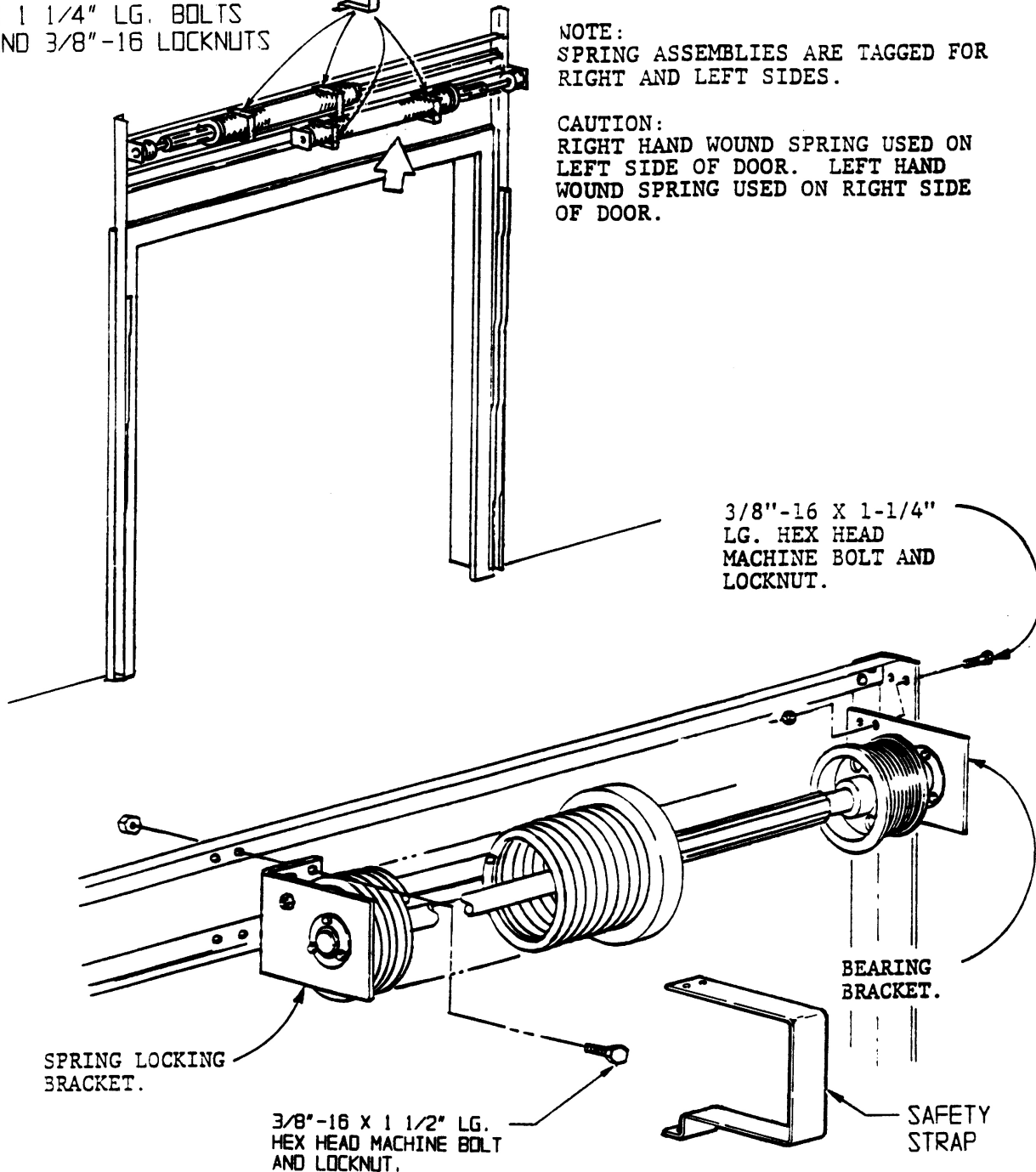
**TORSION SPRING MOUNTING ANGLE INSTALLATION**

SPRING SAFETY STRAP  
2 PER SPRING ASSEMBLY  
ATTACH WITH 3/8"-16  
X 1 1/4" LG. BOLTS  
AND 3/8"-16 LOCKNUTS

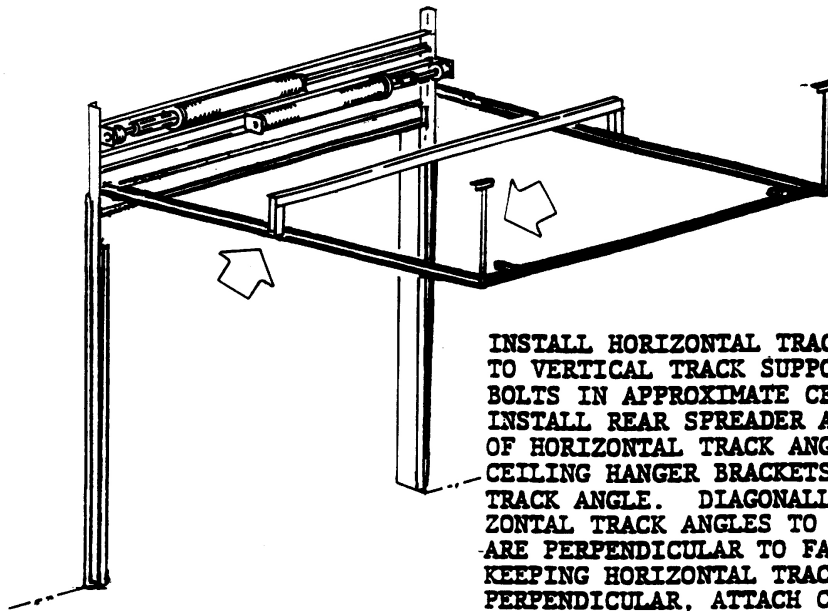
RAISE TORSION SPRING ASSEMBLY INTO  
PLACE AND BOLT BEARING BRACKET TO  
VERTICAL ANGLE AND SPRING LOCKING  
BRACKET TO SPREADER ANGLES.

NOTE:  
SPRING ASSEMBLIES ARE TAGGED FOR  
RIGHT AND LEFT SIDES.

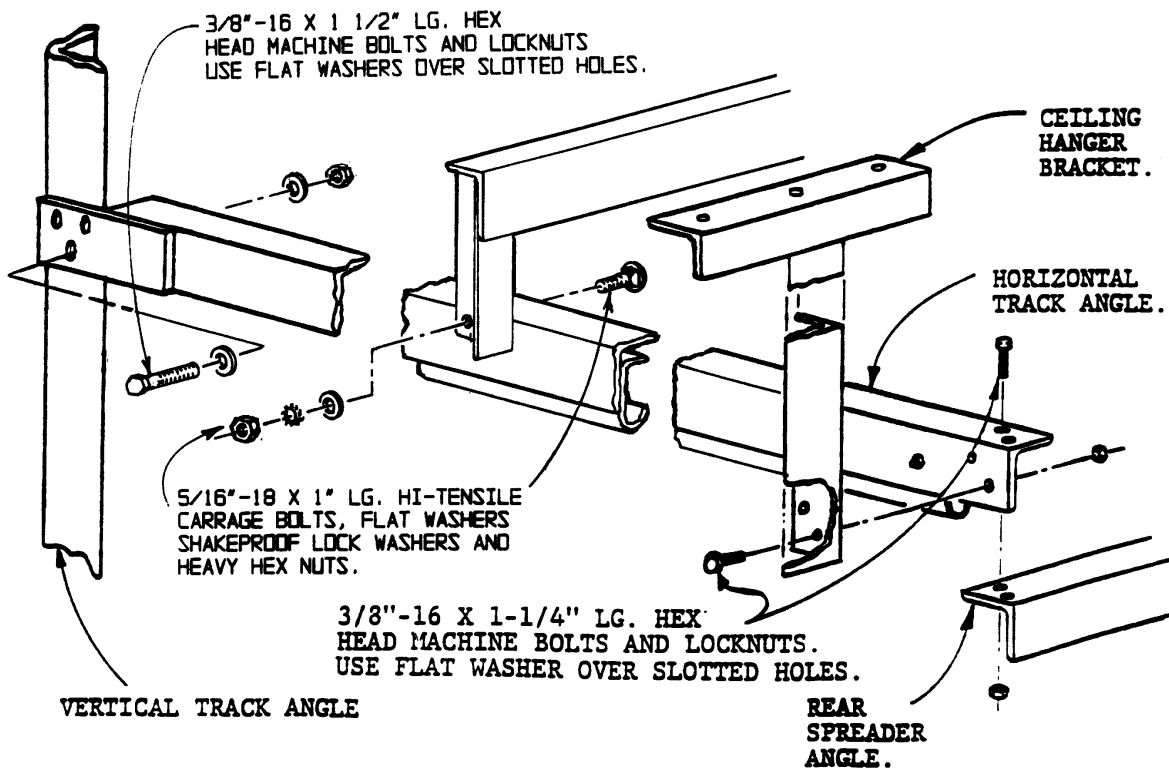
CAUTION:  
RIGHT HAND WOUND SPRING USED ON  
LEFT SIDE OF DOOR. LEFT HAND  
WOUND SPRING USED ON RIGHT SIDE  
OF DOOR.



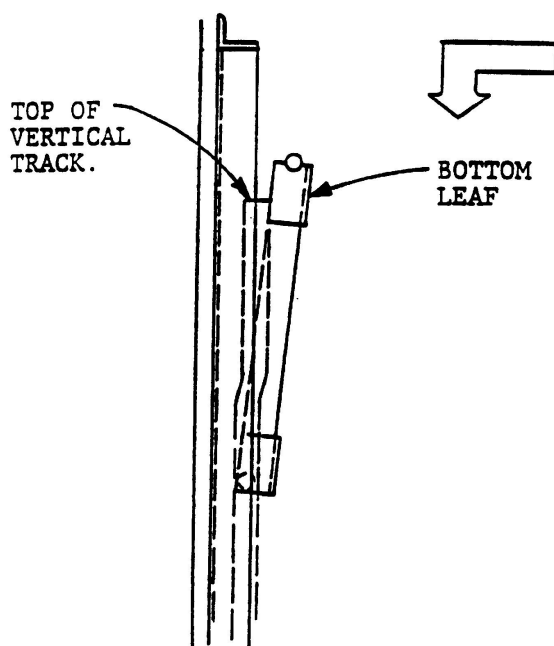
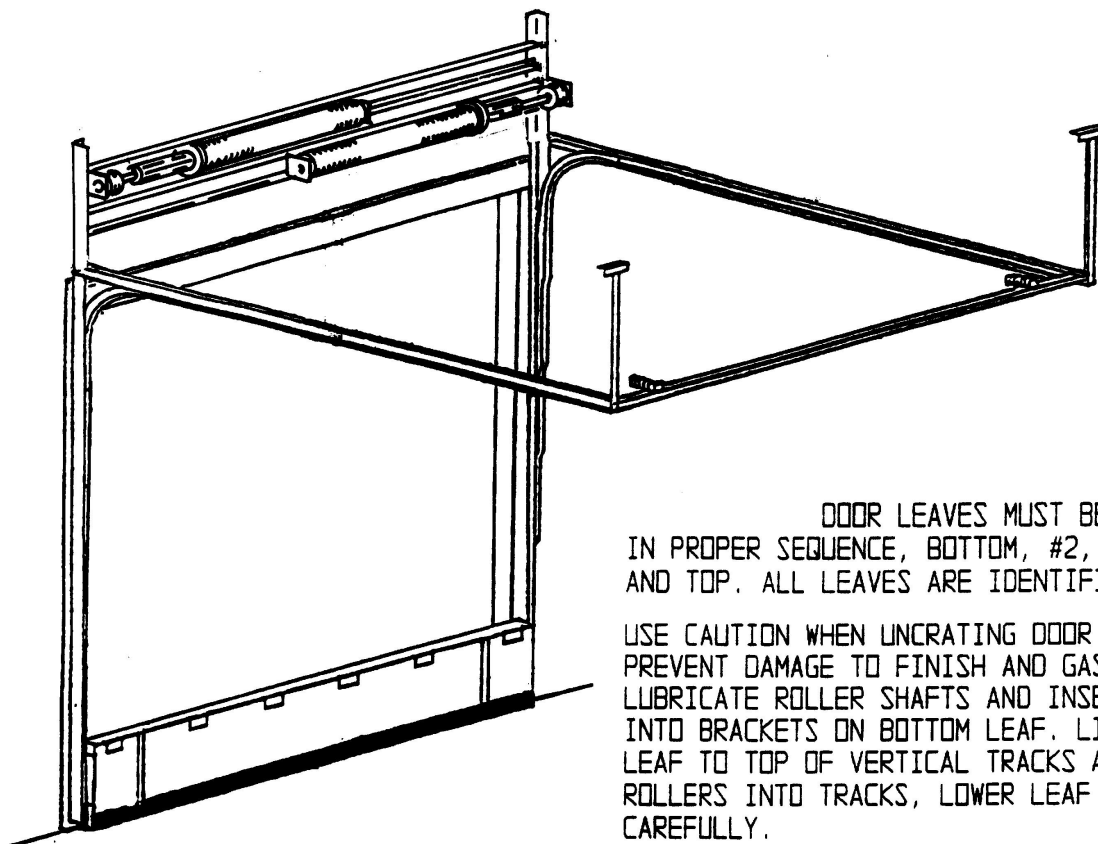
### TORSION SPRING MOUNTING



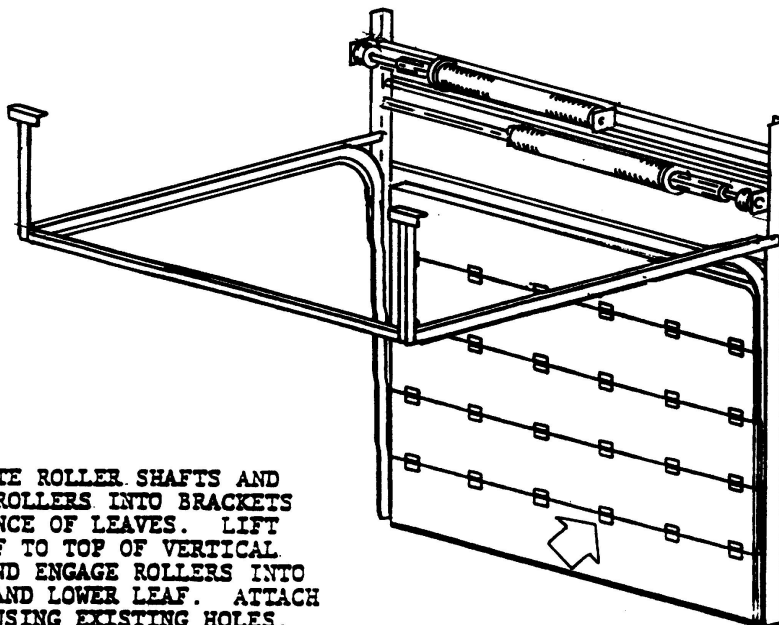
INSTALL HORIZONTAL TRACK ANGLE, BOLTING TO VERTICAL TRACK SUPPORT ANGLE, KEEP BOLTS IN APPROXIMATE CENTER OF SLOTS. INSTALL REAR SPREADER ANGLE BETWEEN ENDS OF HORIZONTAL TRACK ANGLES. ATTACH CEILING HANGER BRACKETS TO HORIZONTAL TRACK ANGLE. DIAGONALLY MEASURE HORIZONTAL TRACK ANGLES TO MAKE SURE THEY ARE PERPENDICULAR TO FACE OF CASING. KEEPING HORIZONTAL TRACK ANGLES LEVEL AND PERPENDICULAR, ATTACH CEILING HANGER BRACKETS TO OVERHEAD SUPPORT. RE-DRILL HANGERS IF NECESSARY TO KEEP TRACKS LEVEL.



### INSTALLING HORIZONTAL TRACK ANGLE

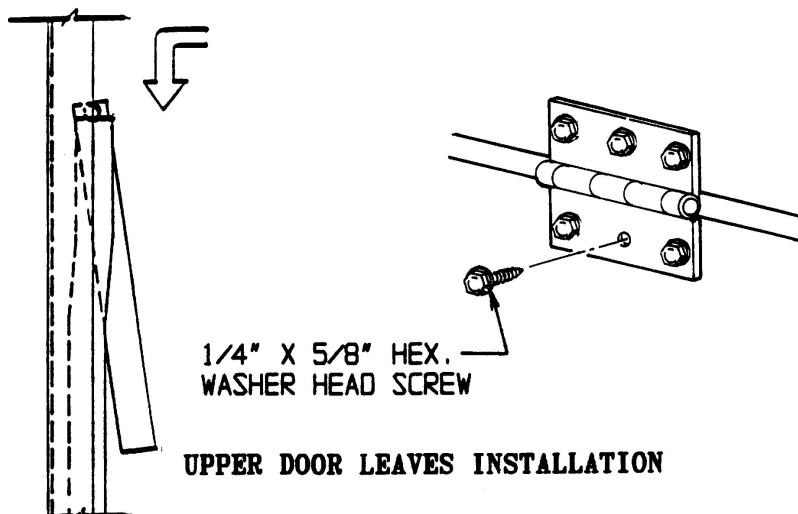


**BOTTOM DOOR LEAF INSTALLATION**



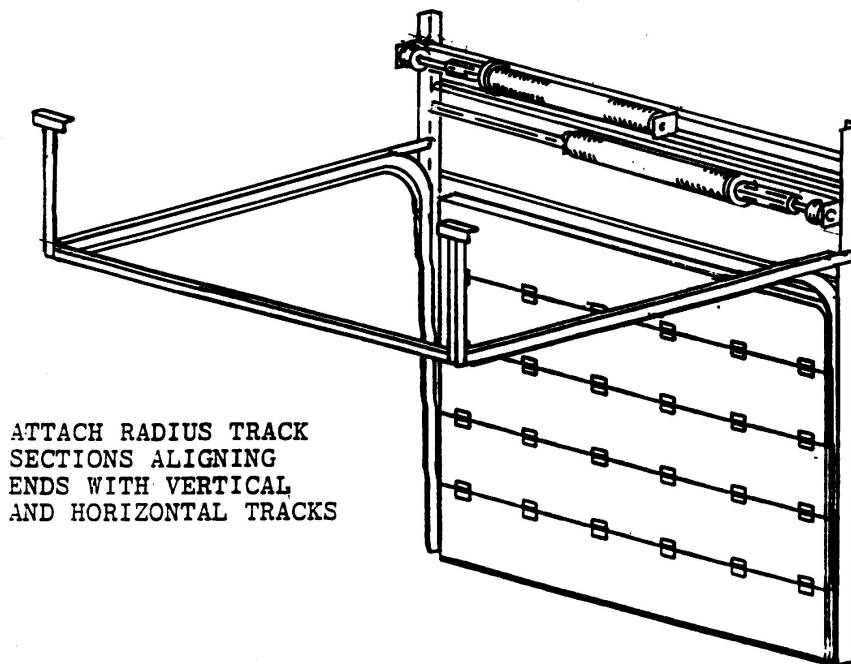
LUBRICATE ROLLER SHAFTS AND  
INSERT ROLLERS INTO BRACKETS  
ON BALANCE OF LEAVES. LIFT  
2ND LEAF TO TOP OF VERTICAL  
TRACK AND ENGAGE ROLLERS INTO  
TRACK, AND LOWER LEAF. ATTACH  
HINGES USING EXISTING HOLES.  
INSTALL BALANCE OF LEAVES IN  
SEQUENCE, AND ATTACH HINGES.

**NOTE:** TOP LEAF MUST BE BLOCKED  
OR TIED IN PLACE UNTIL  
RADIUS TRACK IS INSTALLED.

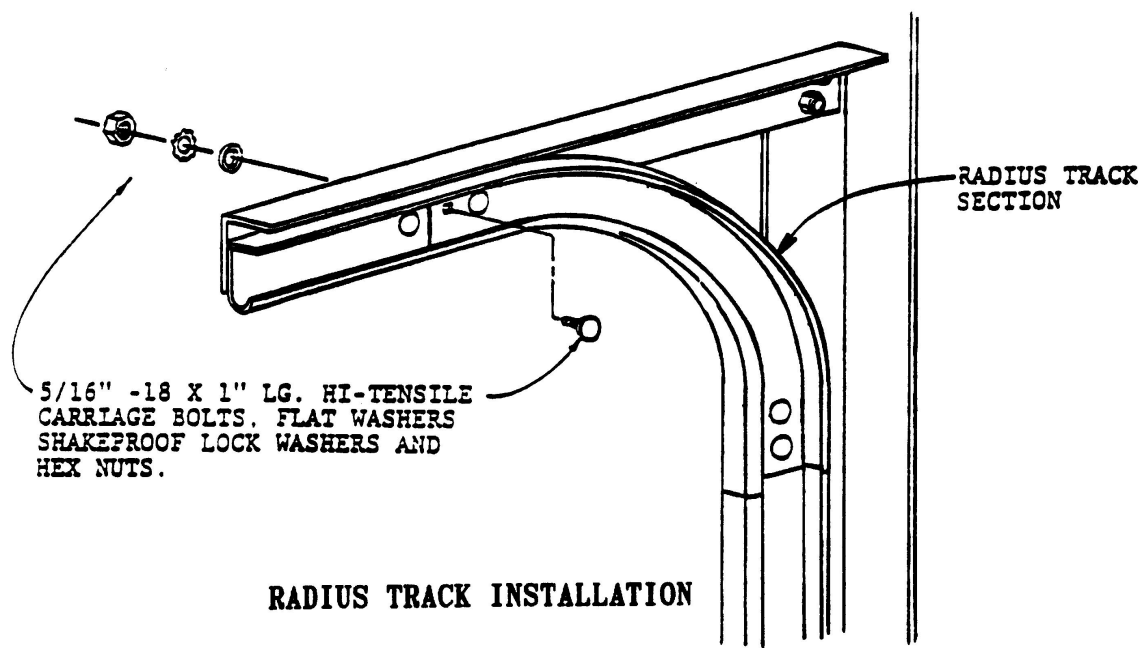


1/4" X 5/8" HEX.  
WASHER HEAD SCREW

UPPER DOOR LEAVES INSTALLATION



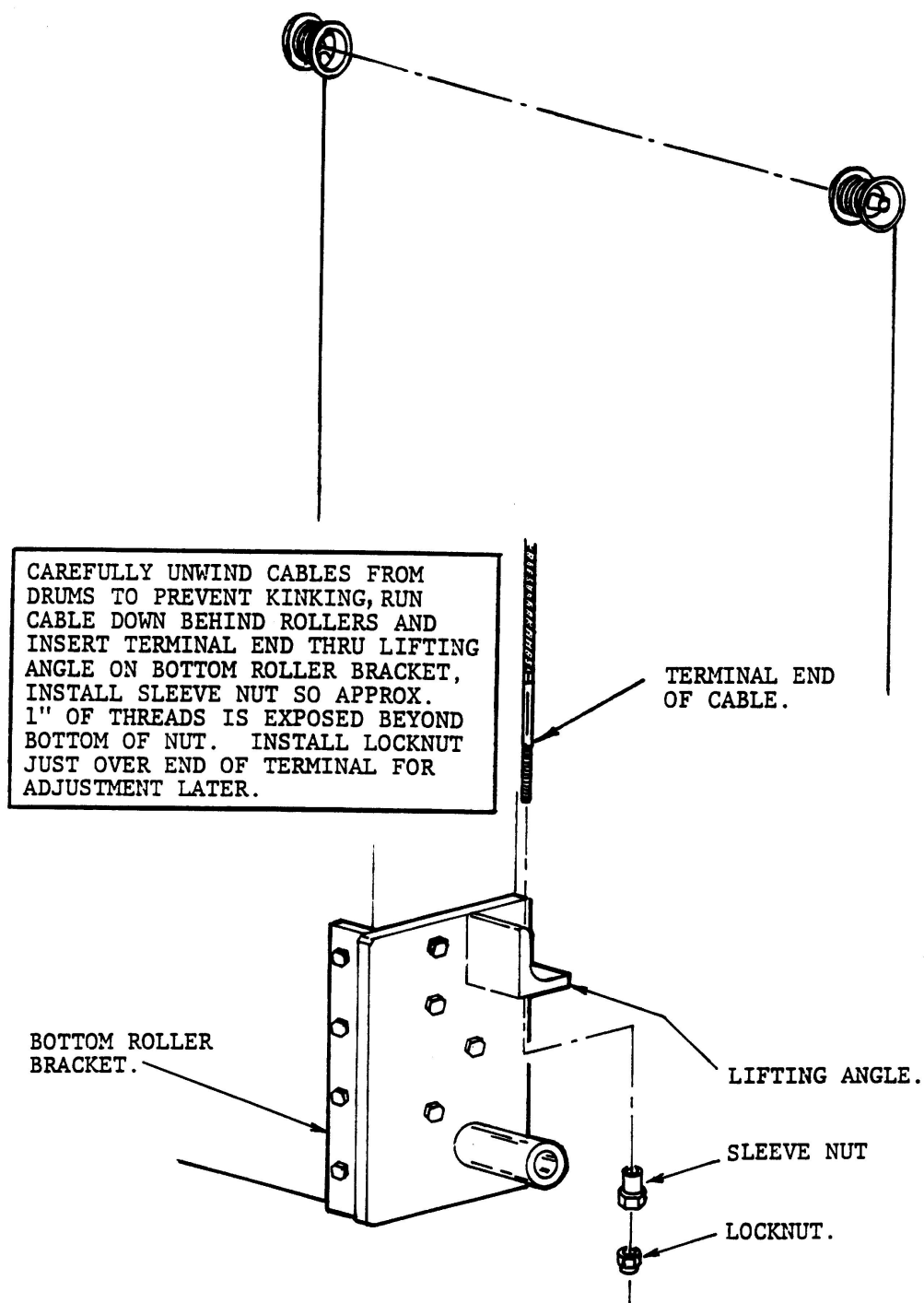
ATTACH RADIUS TRACK  
SECTIONS ALIGNING  
ENDS WITH VERTICAL  
AND HORIZONTAL TRACKS



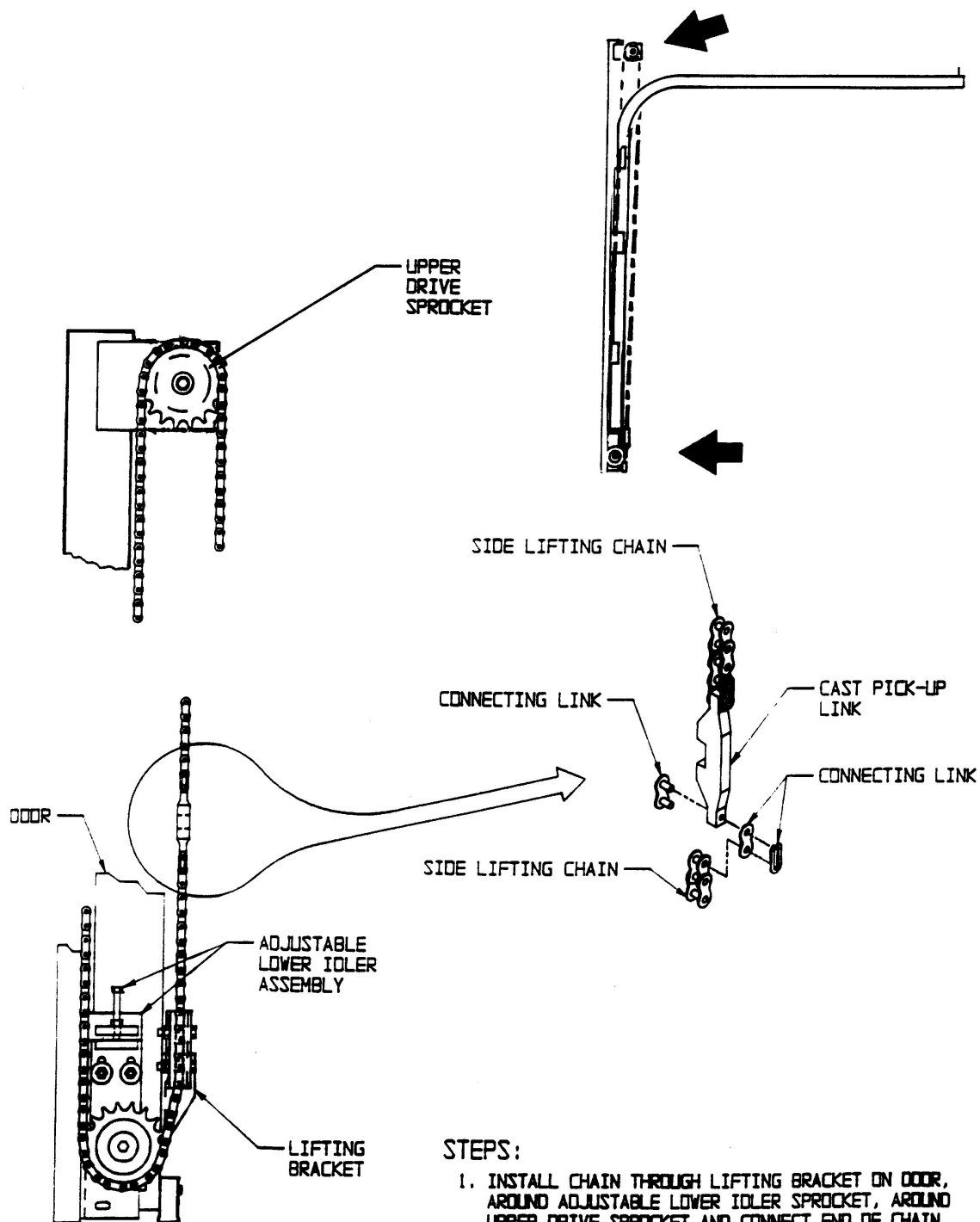
5/16" -18 X 1" LG. HI-TENSILE  
CARRIAGE BOLTS, FLAT WASHERS  
SHAKEPROOF LOCK WASHERS AND  
HEX NUTS.

RADIUS TRACK  
SECTION

RADIUS TRACK INSTALLATION



LIFTING CABLE ATTACHMENT

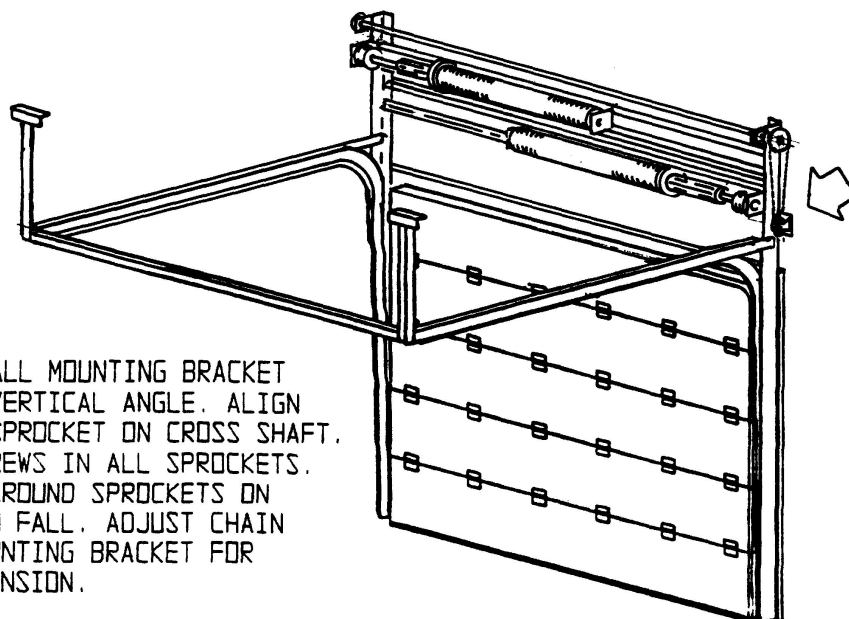


**STEPS:**

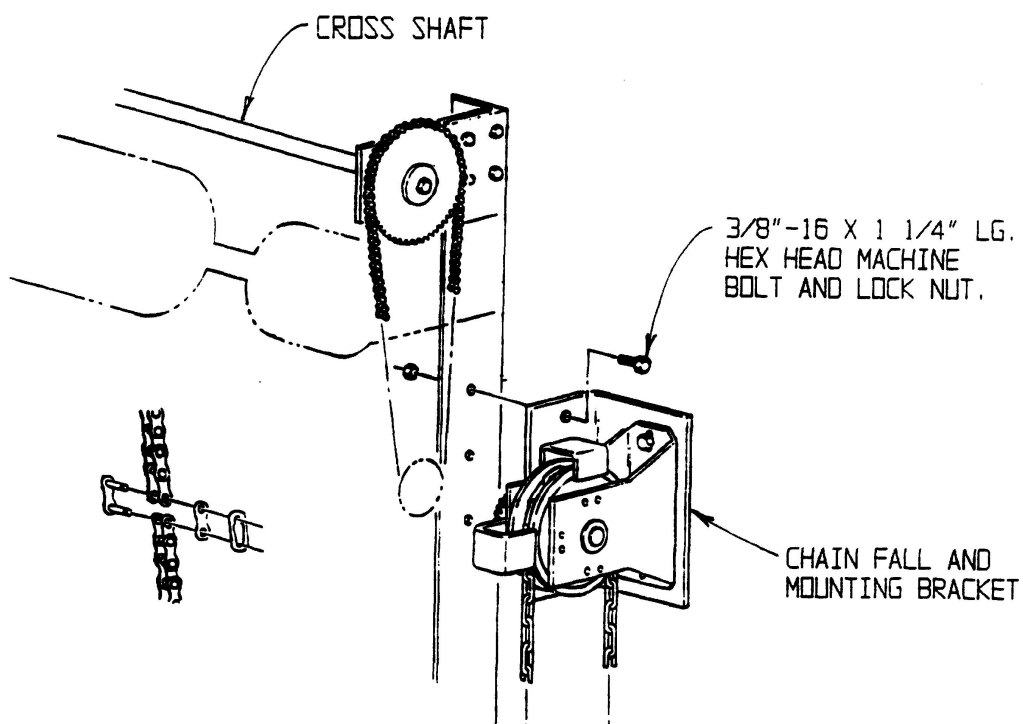
1. INSTALL CHAIN THROUGH LIFTING BRACKET ON DOOR, AROUND ADJUSTABLE LOWER IDLER SPROCKET, AROUND UPPER DRIVE SPROCKET AND CONNECT END OF CHAIN TO CAST PICK-UP LINK.
2. ADJUST LOWER IDLER ASSEMBLY TO TENSION CHAIN.

**SIDE LIFTING CHAIN ATTACHMENT**





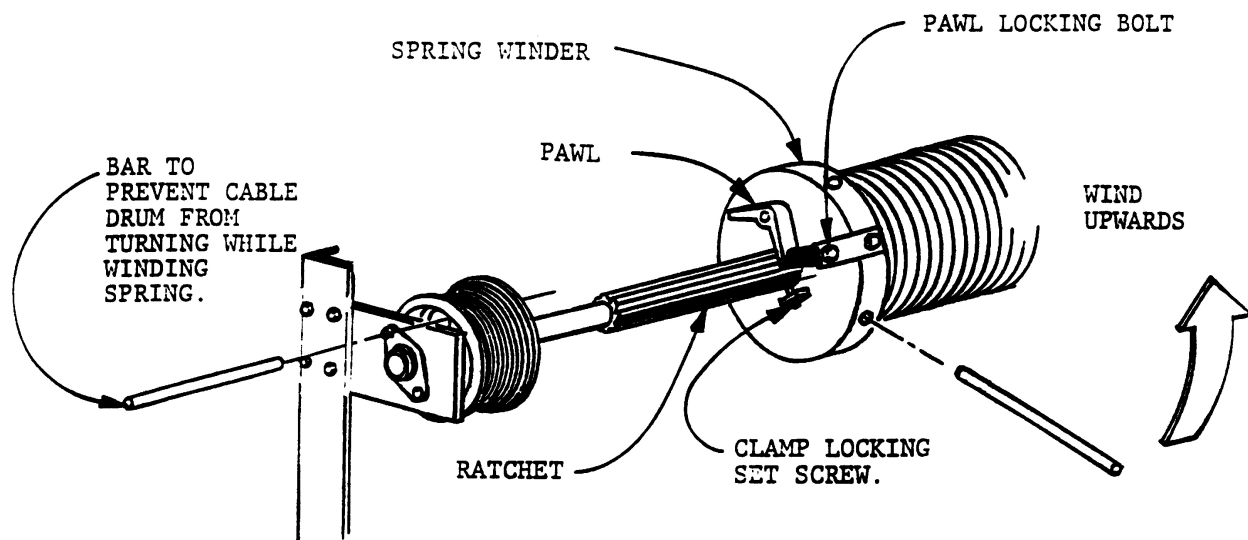
ATTACH CHAIN FALL MOUNTING BRACKET TO RIGHT SIDE VERTICAL ANGLE. ALIGN SPROCKET WITH SPROCKET ON CROSS SHAFT. TIGHTEN SET SCREWS IN ALL SPROCKETS. INSTALL CHAIN AROUND SPROCKETS ON SHAFT AND CHAIN FALL. ADJUST CHAIN FALL ON ITS MOUNTING BRACKET FOR PROPER CHAIN TENSION.



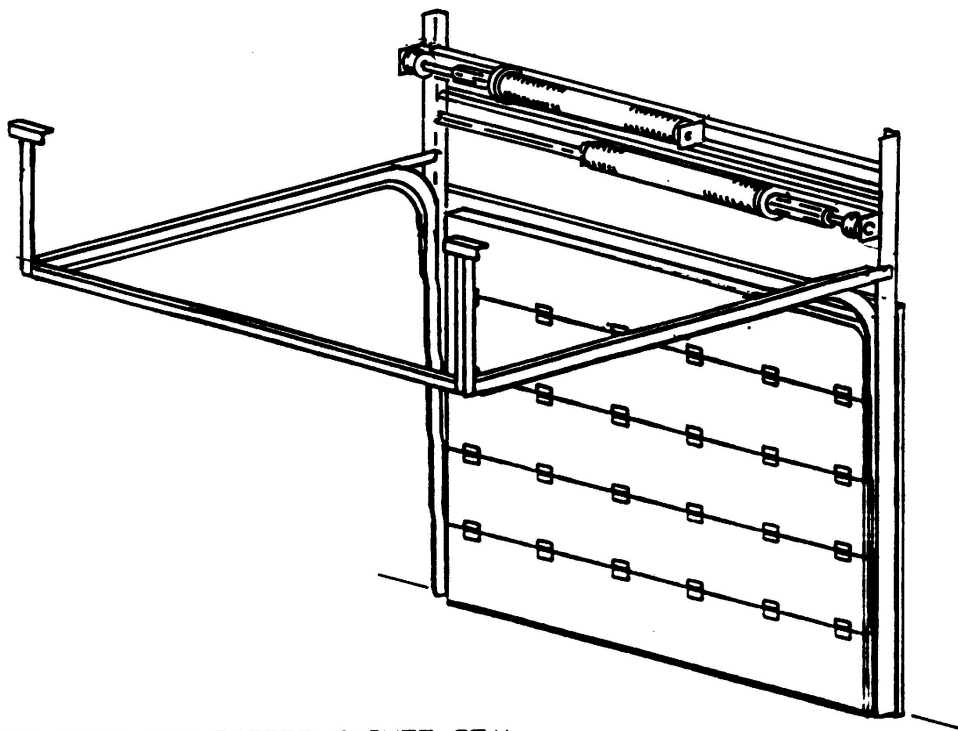
**MANUAL CHAIN HOIST ATTACHMENT**

SPRAY PAINT A HORIZONTAL LINE ACROSS SPRINGS PRIOR TO WINDING. THIS WILL SHOW-UP AS STRIPES INDICATING NUMBER OF TURNS ON WOUND SPRING

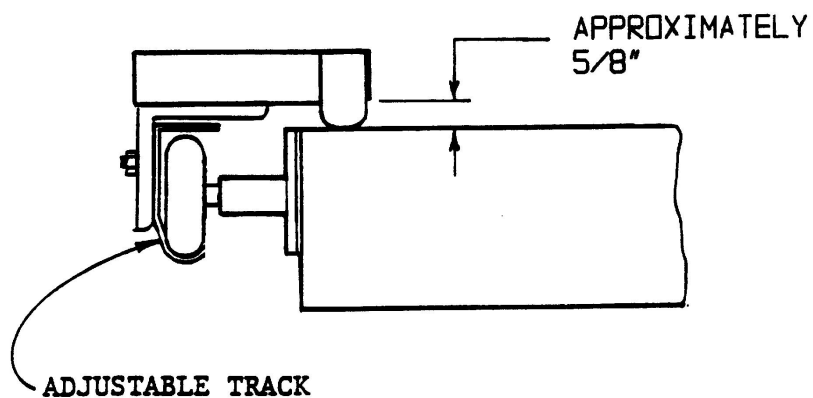
THOROUGHLY LUBRICATE TORSION SPRING ASSEMBLIES BY BRUSHING LIGHT COAT OF #30 WEIGHT OIL OVER COMPLETE SPRINGS. INSERT BAR OR HEAVY SCREWDRIVER THRU CABLE DRUM TO PREVENT TORQUE SHAFT FROM TURNING. USING 5/8" X 18" LONG WINDING BAR FURNISHED, WIND TORSION SPRINGS, KEEPING TRACK OF NUMBER OF TEETH OR "CLICKS" ON RATCHET AS IT IS IMPORTANT TO WIND BOTH SPRINGS THE SAME NUMBER OF TURNS. WIND EACH SPRING 78 TEETH OR "CLICKS" INITIALLY. BEFORE OPERATING DOOR, SLIDE SPRING WINDER APPROXIMATELY 1" OUT ON RATCHET BY TAPPING SPRING WINDER LIGHTLY. THIS WILL HELP RELIEVE FRICTION BETWEEN COILS. TIGHTEN PAWL LOCKING BOLT AND CLAMP LOCKING SET SCREW. OPERATE DOOR THRU ITS FULL TRAVEL, OPEN AND CLOSE. IT SHOULD REQUIRE APPROXIMATELY SAME PULL TO OPEN AND CLOSE. INCREASE OR DECREASE THE NUMBER OF WINDS EQUALLY ON SPRINGS UNTIL THIS IS ACHIEVED. ADJUST SLEEVE NUTS ON LIFTING CABLES TO LEVEL BOTTOM OF DOOR. TIGHTEN LOCKNUTS AGAINST SLEEVE NUTS.



**TORSION SPRING TENSIONING**



ADJUST DOOR FOR PROPER GASKET SEAL.  
LOOSEN TRACK FASTENINGS AND MOVE  
TRACK IN OR OUT AS REQUIRED TO  
ACHIEVE GASKET SEAL. THERE SHOULD  
BE APPROXIMATELY 5/8" FROM  
FACE OF CASING TO BACK OF DOOR.  
TIGHTEN ALL TRACK FASTENINGS.



### GASKET ADJUSTMENT