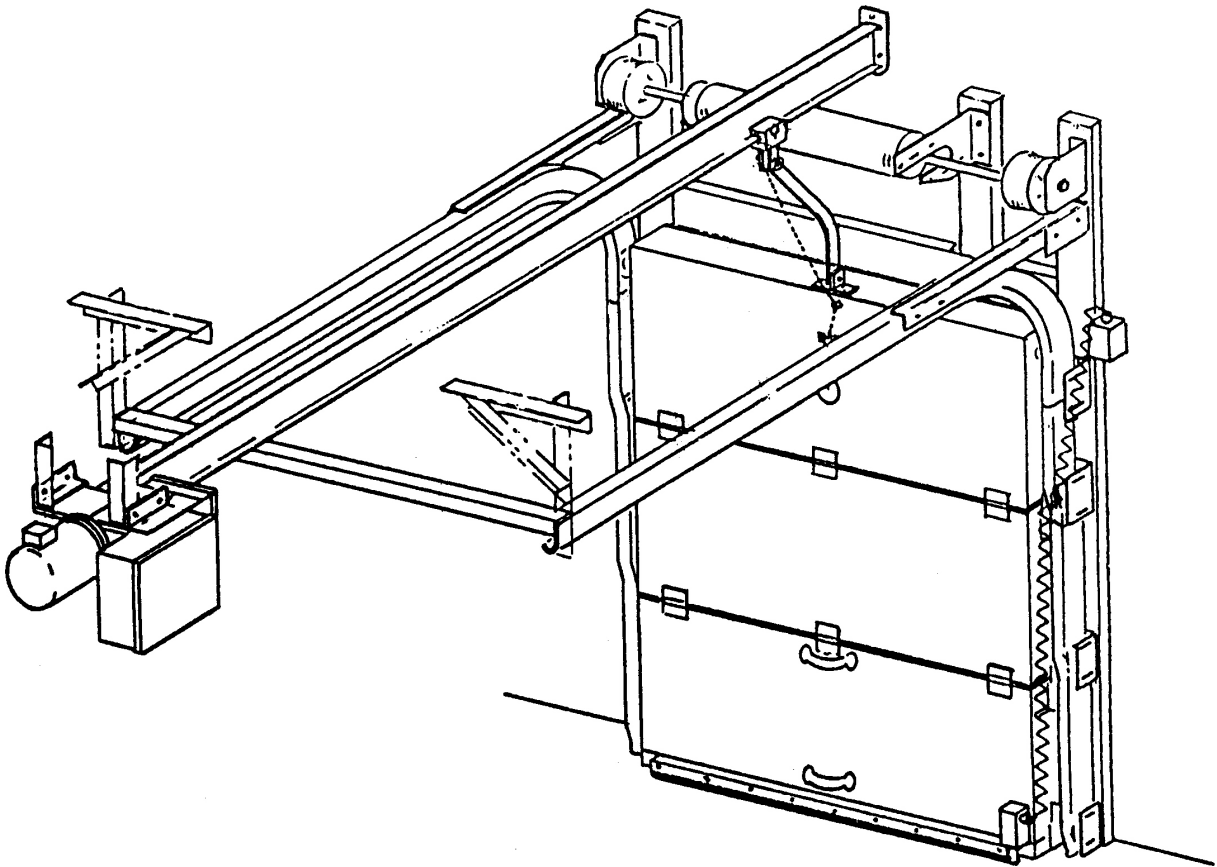


JAMISON

INSTALLATION INSTRUCTIONS FOR MARK IV STANDARD LIFT POWER DOOR

**AFTER INSTALLING DOOR FORWARD TO
MAINTENANCE DEPARTMENT OR OWNER**



JAMISON DOOR COMPANY
P.O. BOX 70
HAGERSTOWN, MARYLAND 21741
USA
(1-800-532-3667)

INTERNET: <http://www.jamison-door.com>

E-MAIL: engineering@jamison-door.com

DJ-9045-2B
996514

INDEX SHEET

GENERAL INFORMATION	3
MINIMUM CLEARANCE DIMENSIONS	4
COOLER DOOR FRAME ERECTION	5
FREEZER DOOR FRAME ERECTION	6
INSTALLING DOOR LEAVES	7
RADIUS TRACK INSTALLATION	8
TORSION SHAFT INSTALLATION	9
TORSION SPRING TENSIONING	10
POWER UNIT ERECTION	11
PULL CORD CONNECTIONS	12
DOOR WIRING	13
POWER SUPPLY CONNECTIONS	14
TEST OPERATION UNDER POWER	15
TRAVEL LIMIT SWITCH ADJUSTMENT	16
TORQUE LIMITER ADJUSTMENT	17
PADLOCKING	17
LUBRICATION INSTRUCTIONS	18
ELECTRICAL TROUBLE SHOOTING GUIDE	19
MASTER LABEL PLATE	20
FINAL CHECK•OUT	21

GENERAL INFORMATION:

A. Contents of Crates and Carton

1. Frame component parts and assemblies shipped knocked-down.
NOTE: If frame has jambs, casings and jambs shipped in separate crate.
2. One crate containing door leaves with all components parts and assemblies attached.
3. One carton containing:
 - a. Packing List
 - b. Installation Instructions

B. Inspect for Damage and **Shortage Immediately**

1. Note on all copies of delivery receipt any apparent damages and shortages.
2. Open all shipping containers and inspect for concealed damage and shortages. Carefully repack to prevent further damage and pilferage.
3. Report within 15 days in writing to the transportation company, with a copy to us, any concealed damage and shortages. After 15 days, the law permits the transportation company to reject all claims.

C. Handle All Parts Carefully

1. Certain parts such as gaskets, etc. are vulnerable.

D. READ ALL INSTRUCTIONS BEFORE PROCEEDING WITH ERECTION

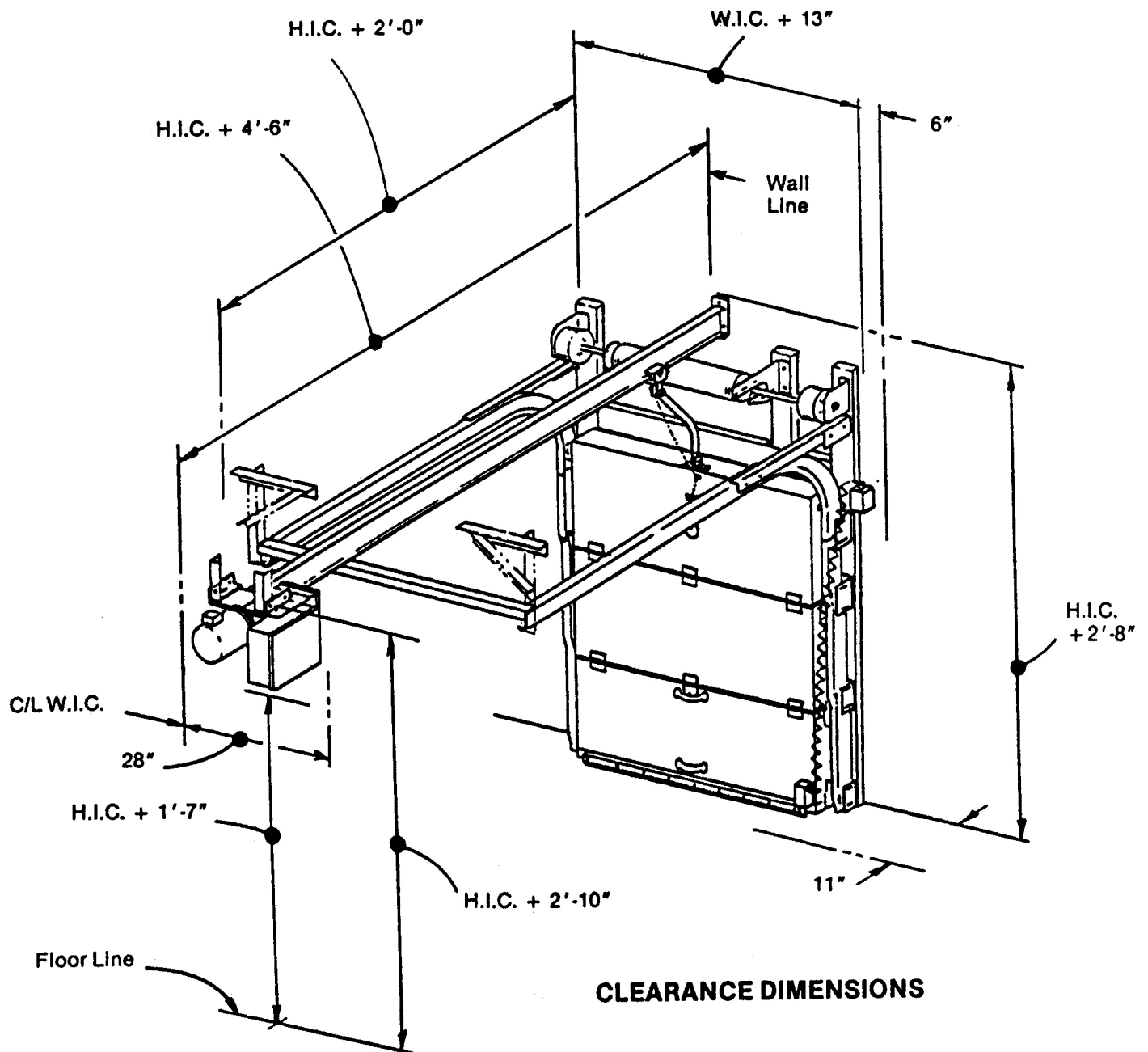
1. Instructions include basic drawings for all door types.
2. Use drawings applicable to your door.
3. Refer to job drawings for special features.

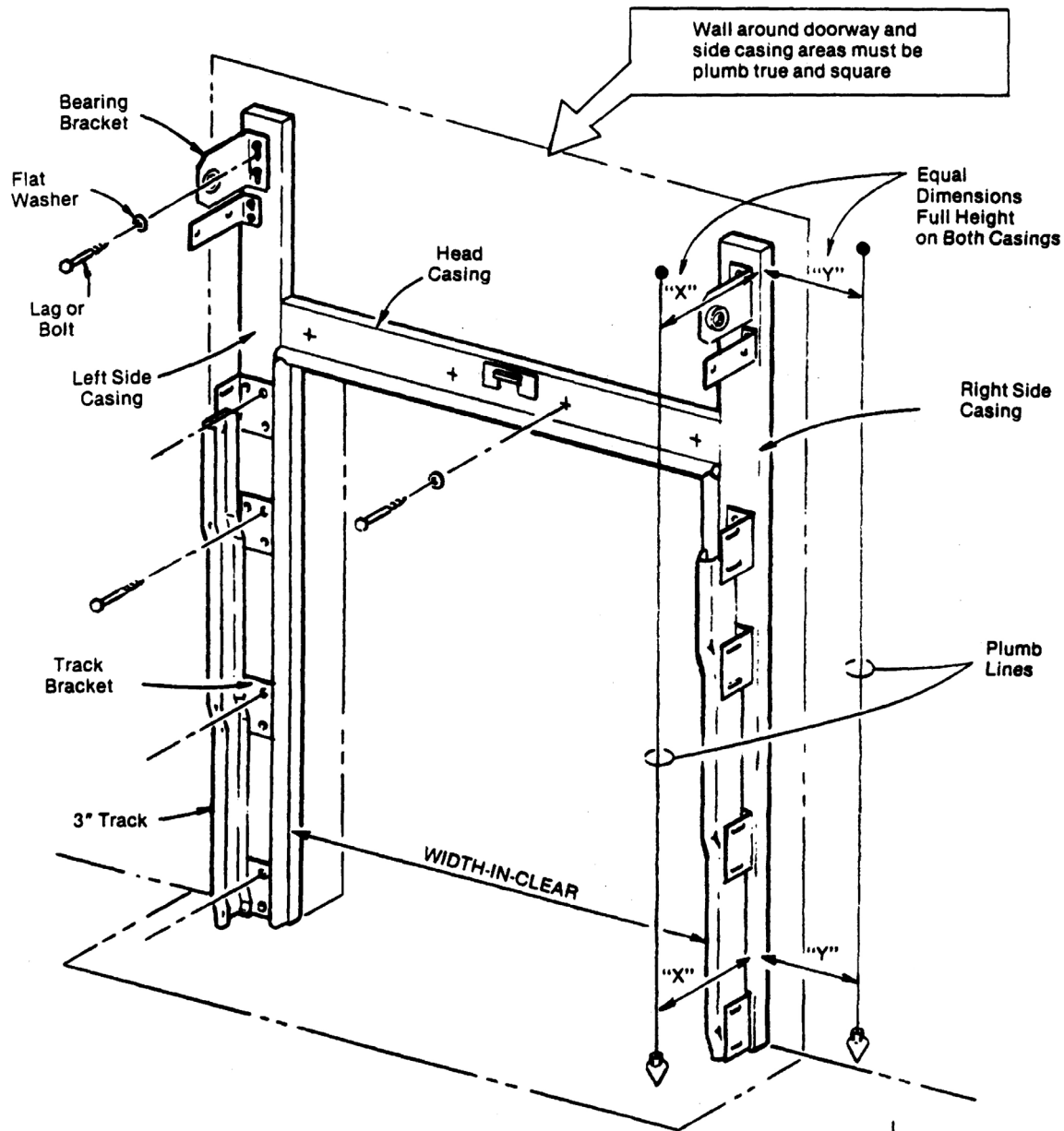
E. Plan Ahead

1. Choose installers who are millwrights or have equal qualifications.
2. Have all tools and materials necessary for installation readily available.

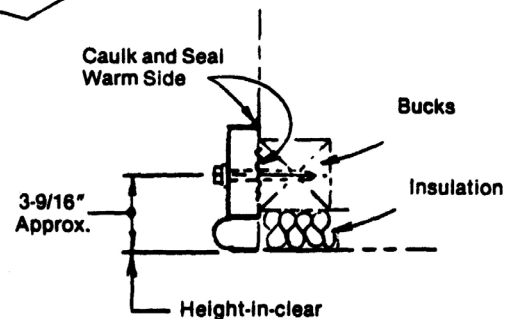
NOTES:

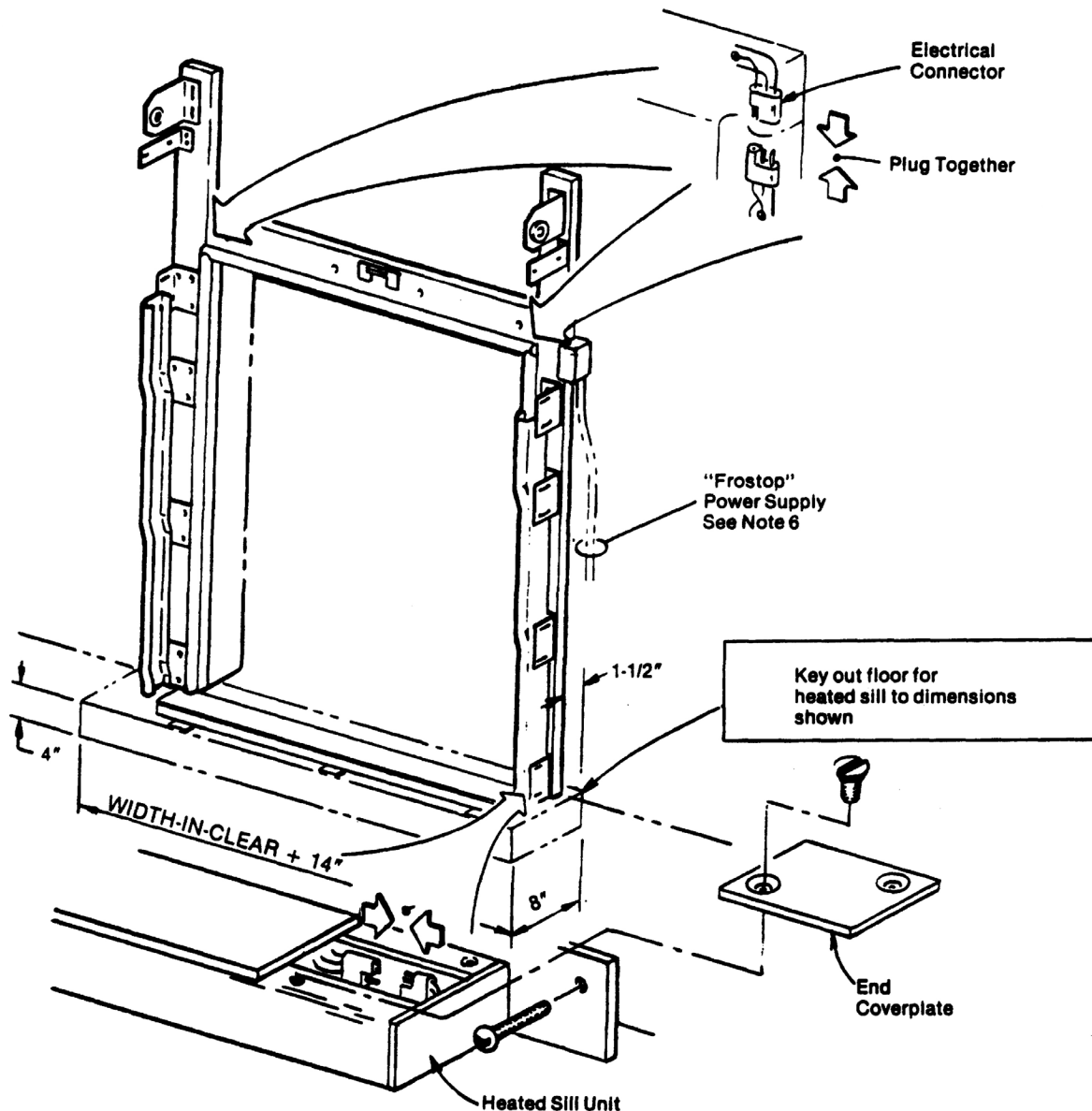
1. Install door according to installation Instructions 996514.
2. Read all instructions before proceeding with erection of door.
3. H.I.C. – Height-in-Clear.
4. W.I.C. – Width-in-Clear.



**STEPS:**

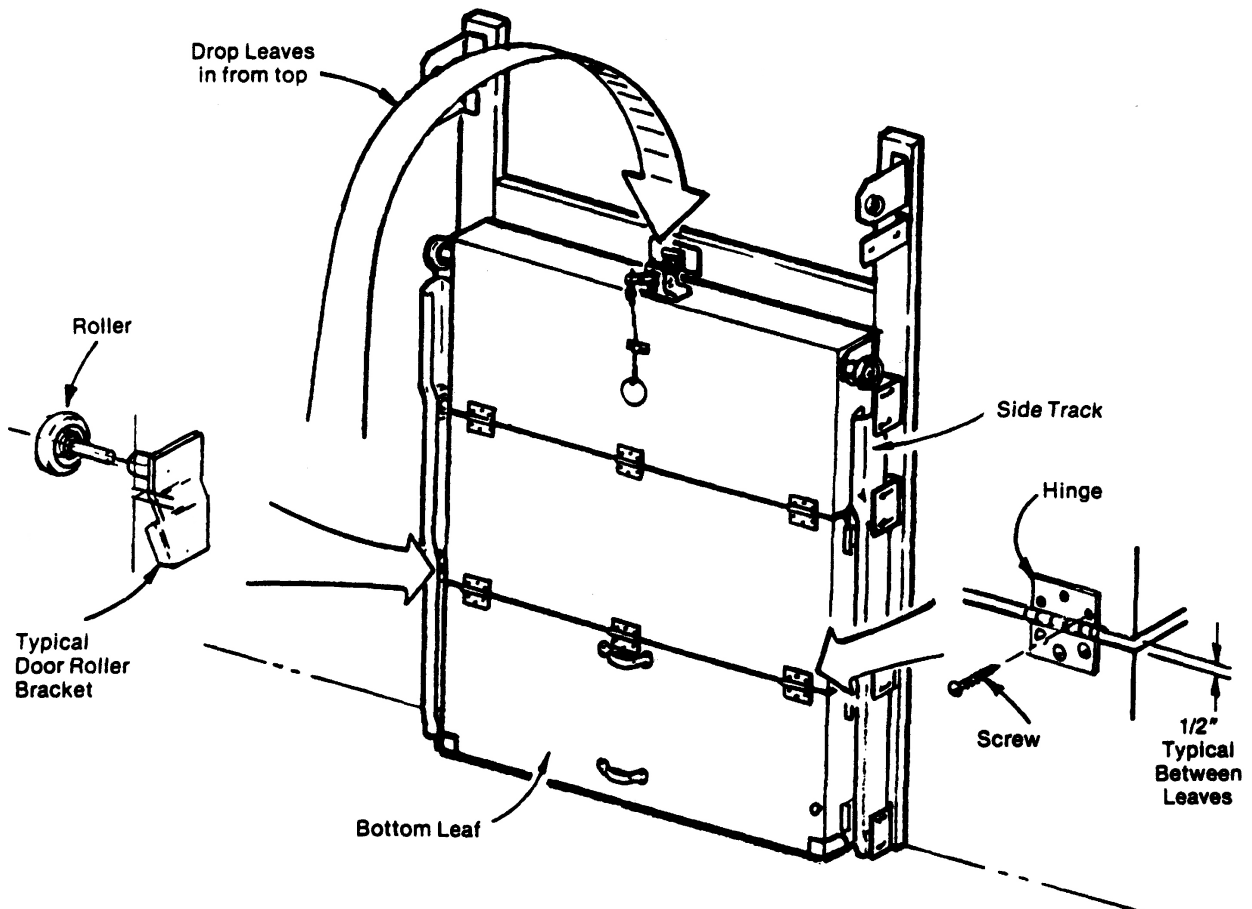
1. Floor through door opening must be true and level to within $\pm 1/8"$.
2. Caulk and Vapor Seal back, bottom, and around edges of each casing. Install first side casing at high side of opening, shim other side casing as required to maintain a level condition. Install head casing, plumb side casings, shim if required to obtain a true plane, attach casings through each track bracket and top bearing bracket as shown.

**COOLER DOOR FRAME ERECTION — SEE NEXT PAGE FOR FREEZER****TYPICAL SECTION**

**STEPS:**

1. Install frame same as cooler door-SEE PREVIOUS PAGE
2. Attach heated sill to side casings.
3. Plug together electrical connectors at four corners of frame as shown.
4. Install end coverplates, **caulk and seal to exclude moisture.**
5. Brace heated sill securely and grout in finished concrete floor around sill.
6. Connect 120 volt supply to frame junction box through lockable disconnect switch (not by Jamison) in accordance with the N.E.C. code.
7. Check for proper heating.

FREEZER DOOR FRAME ERECTION — SEE PREVIOUS PAGE

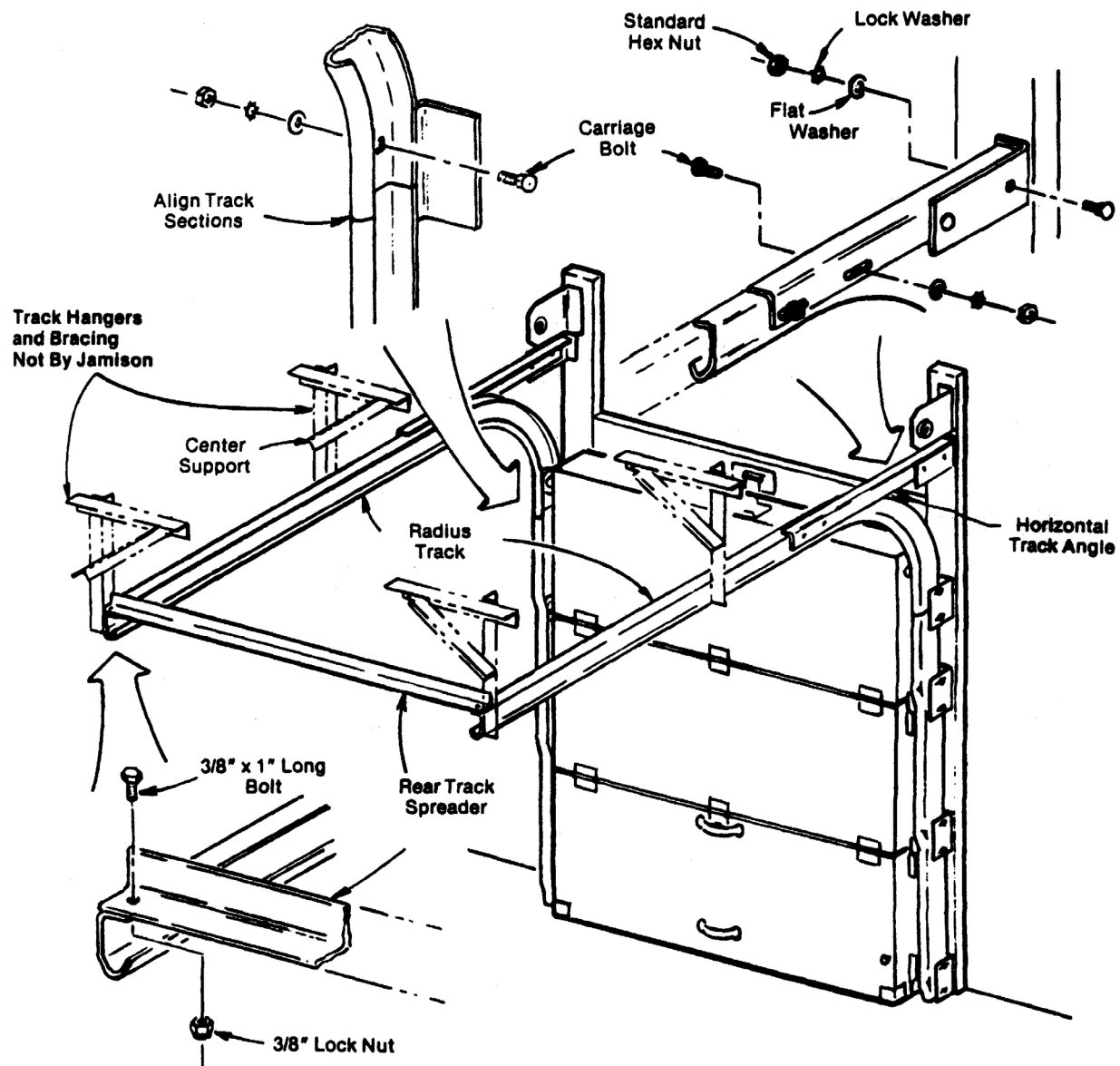


3-LEAF DOOR SHOWN - 4 OR 5 LEAF DOOR SIMILAR

STEPS:

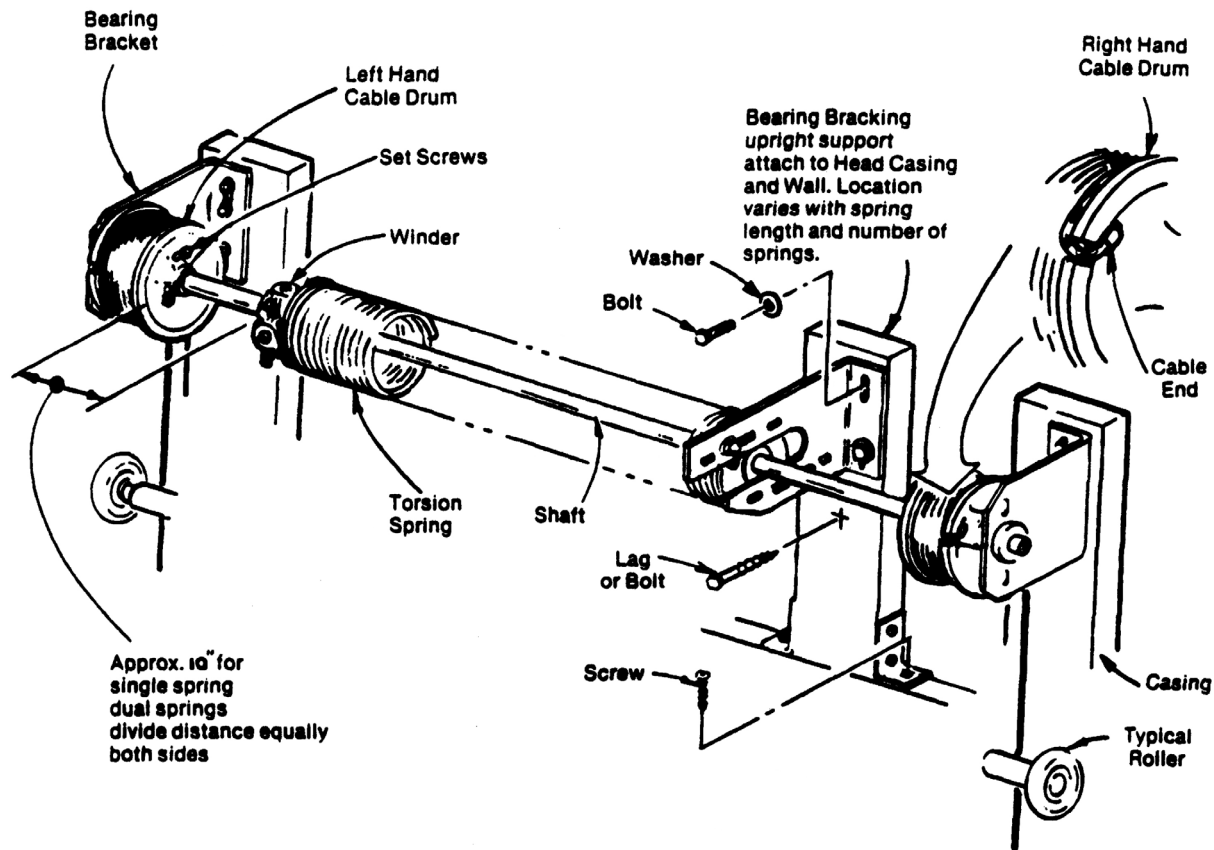
1. Insert rollers into all door roller brackets.
2. Starting with the bottom leaf install leaves into tracks by lifting each leaf above side tracks and stacking into position.
3. Adjust gap between each leaf to approx. 1/2". Install screws into hinges.
4. Top leaf must be temporarily secured to prevent leaf from falling forward.

INSTALLING DOOR LEAVES

**STEPS:**

1. Assemble radius track sections as shown. Entire system must be installed level, true and square.
2. Securely attach horizontal track to adequate support structure by installing angled track hangers similar to the ones pictured, center track support is required on radius tracks over 8'-0". **TRACK SUPPORT BRACKETS NOT BY JAMISON.**
3. Adjust tracks to obtain 5/8" uniform gasket compression between door leaves and frame.

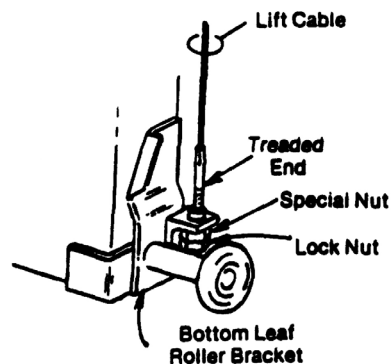
RADIUS TRACK INSTALLATION

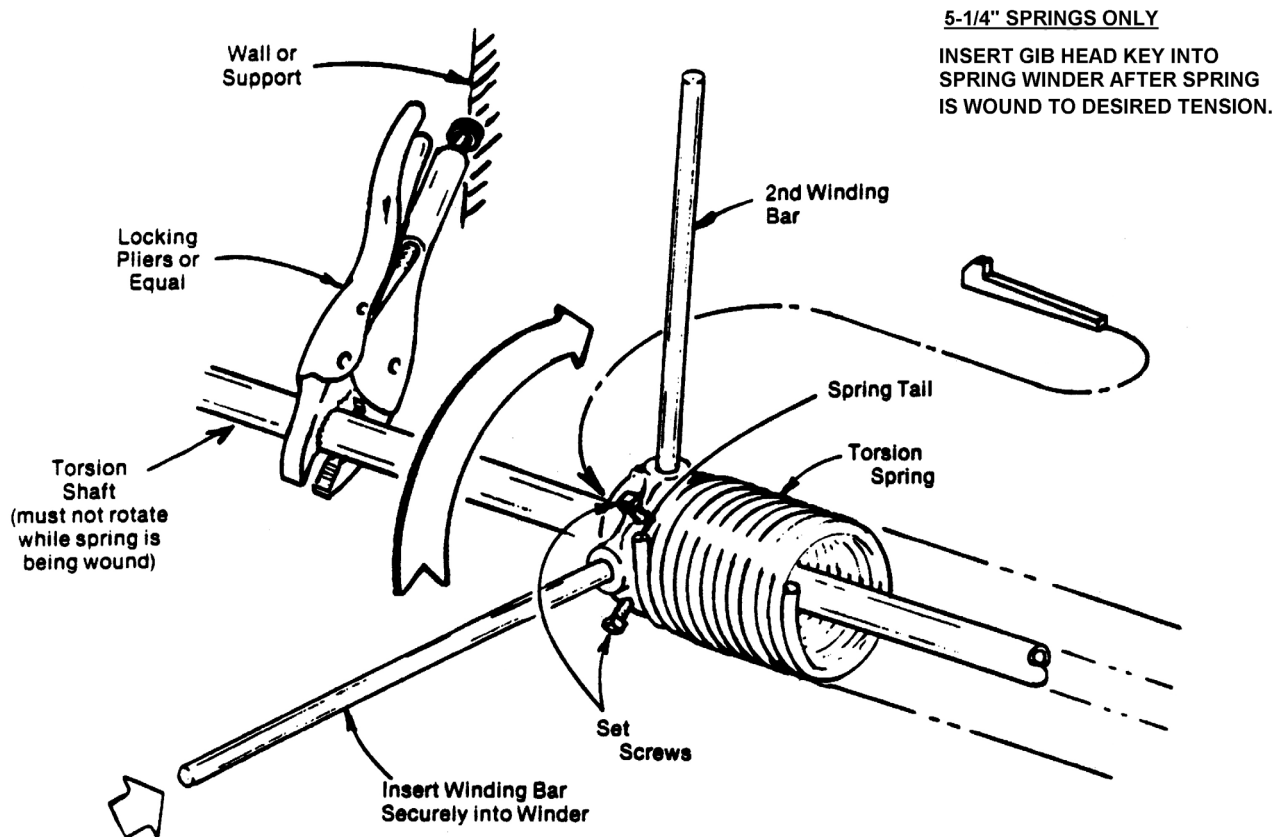


SINGLE SPRING ASSEMBLY SHOWN - DUAL SPRING ASSEMBLY SIMILAR

STEPS:

1. Install torsion spring assembly into bearing brackets as shown. Leave shaft extend an equal distance on each side. (See Note #4)
2. Slide left and right cable drums to within approx. 1/16" of bearing brackets.
3. Uncoil cables from bottom leaf and thread cable between door roller spindles and casing. Attach cable to drum as shown and wind cable onto drum so each side has an even tension and cable is taut. Tighten cable drum set screws securely to shaft approx. 19' lbs.

**TORSION SHAFT INSTALLATION**



SINGLE SPRING SHOWN — DUAL SPRING SIMILAR

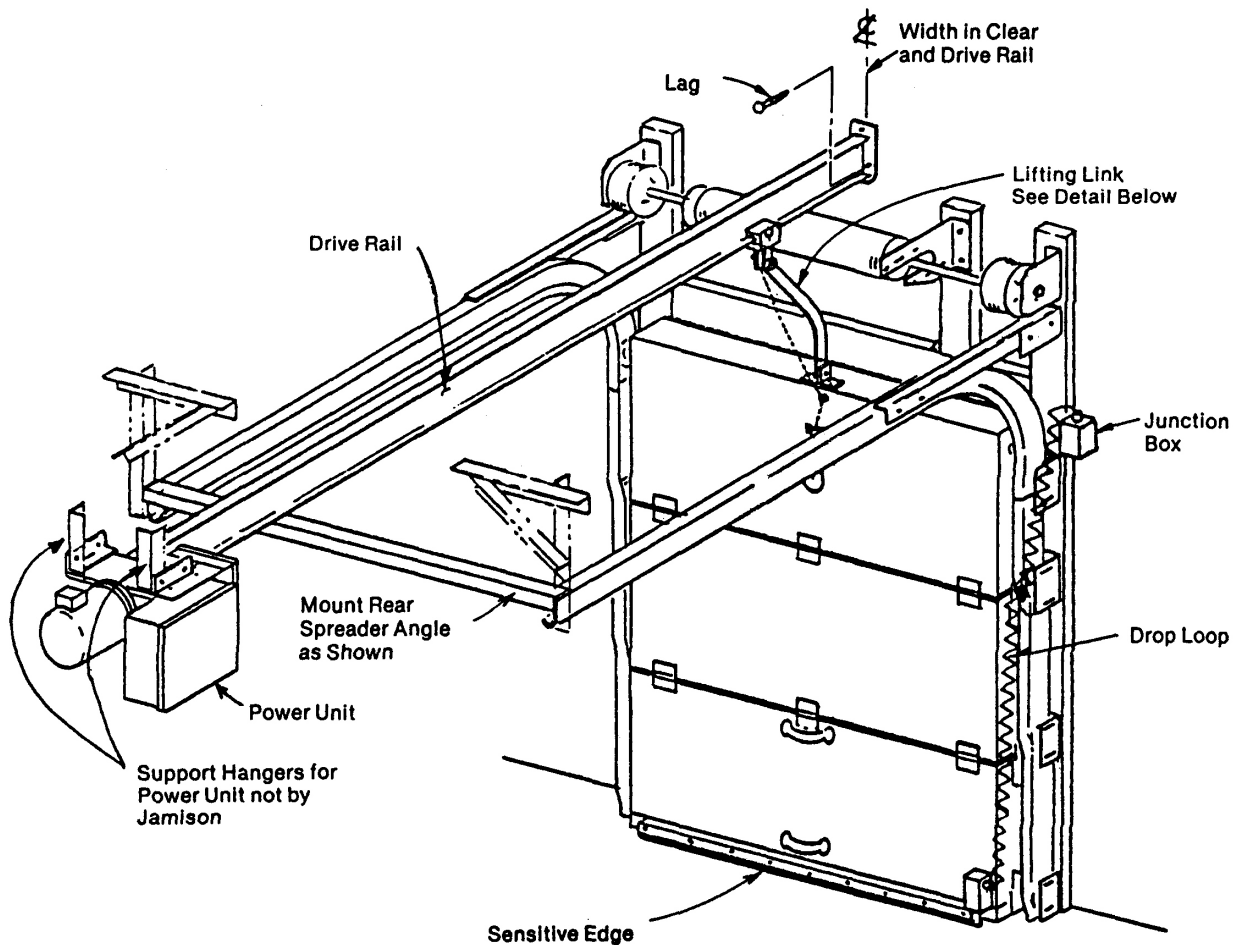
CAUTIONS: Winding of torsion Springs can be dangerous. Never stand in front of winding bars while winding springs. Make sure you have a secure footing. Never use undersized rods or other tools for winding springs.

STEPS:

1. Use locking pliers or equivalent means to prevent torsion shaft from rotating.
2. Insert winding rod fully into winder, rotate spring in the same direction as the spring tail points to increase tension (see illustration). Rotate 1st rod approx. 1/4 turn and insert 2nd rod. Repeat this procedure until desired number of turns are on spring. See tag for number of turns required. **TIGHTEN SET SCREWS.** Approx. 19' / lbs.
3. Check for proper operation, door should be counter-balanced during open and close cycles. Re-adjust if required. Securely tighten all set screws.

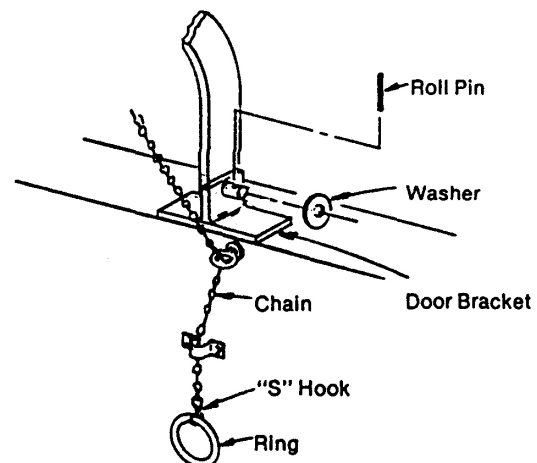
TORSION SPRING TENSIONING

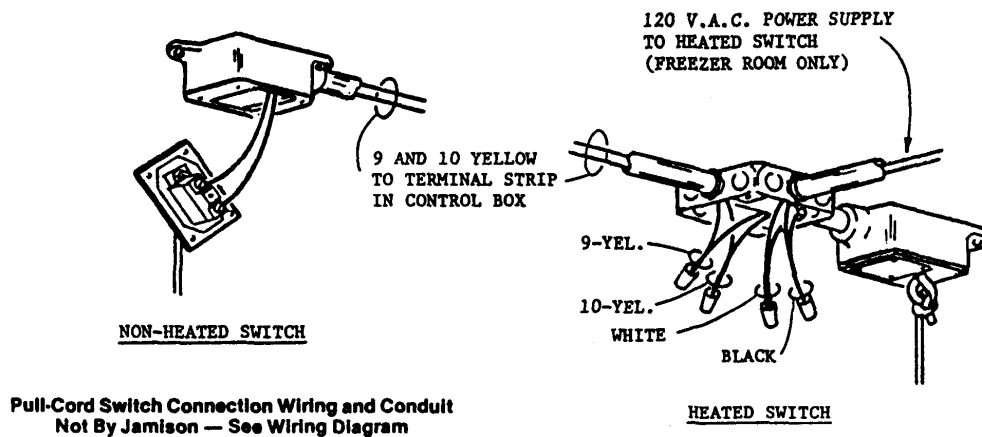
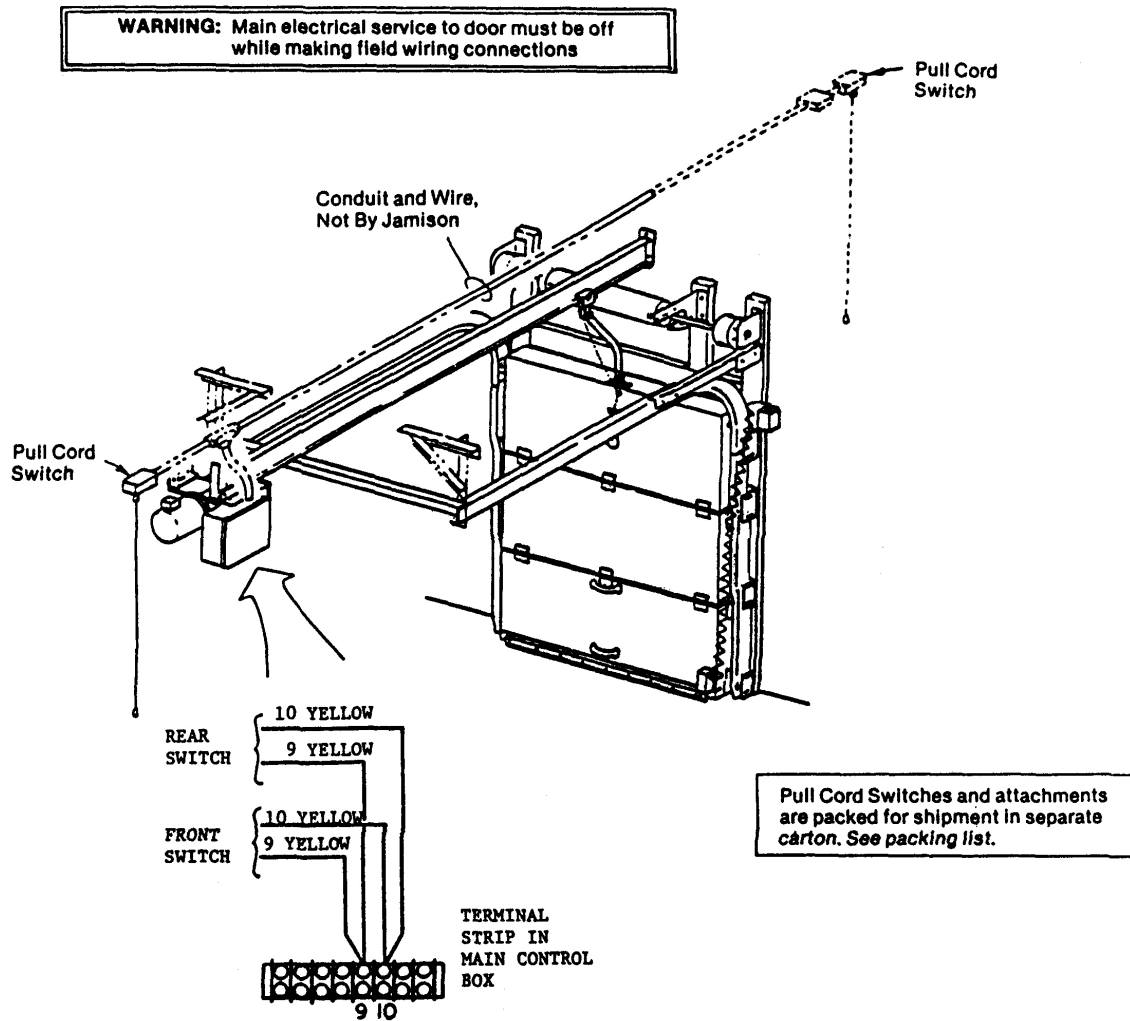
POWER UNIT ERECTION



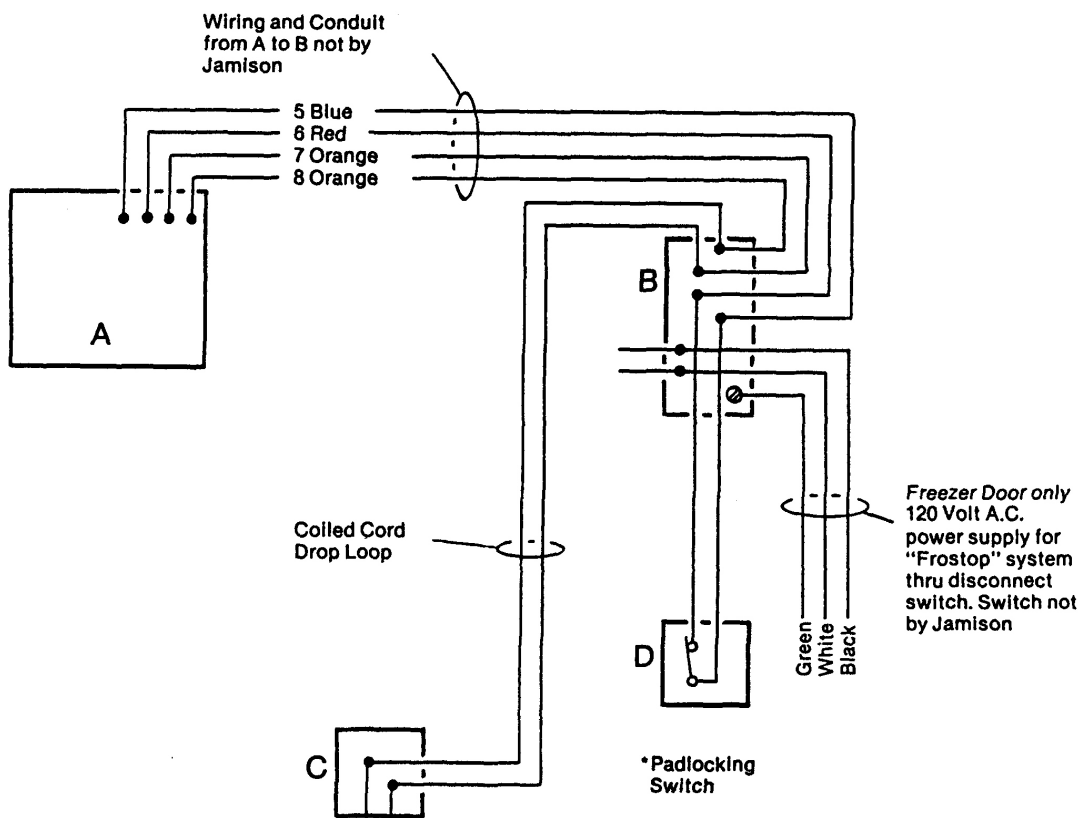
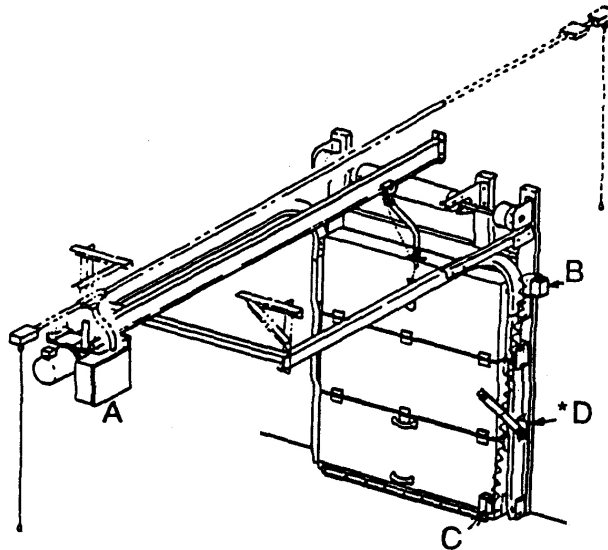
STEPS

1. Attach "I" beam drive rail to secure wall supports 24" from height-in-clear to bottom of drive rail. Keep rail level and perpendicular to face of door. Securely support power unit as shown.
2. Assemble lifting link to door bracket as shown.
3. String pull chain thru eye and guide as shown.
4. Attach drop loop to junction box on side of frame.

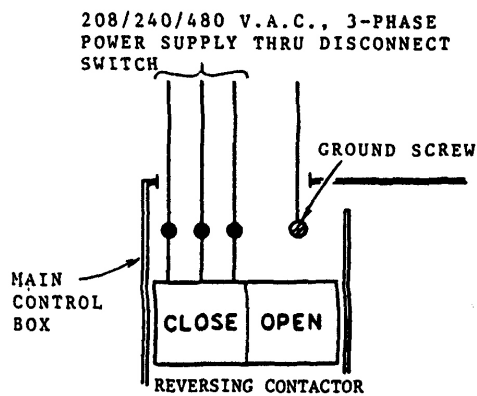
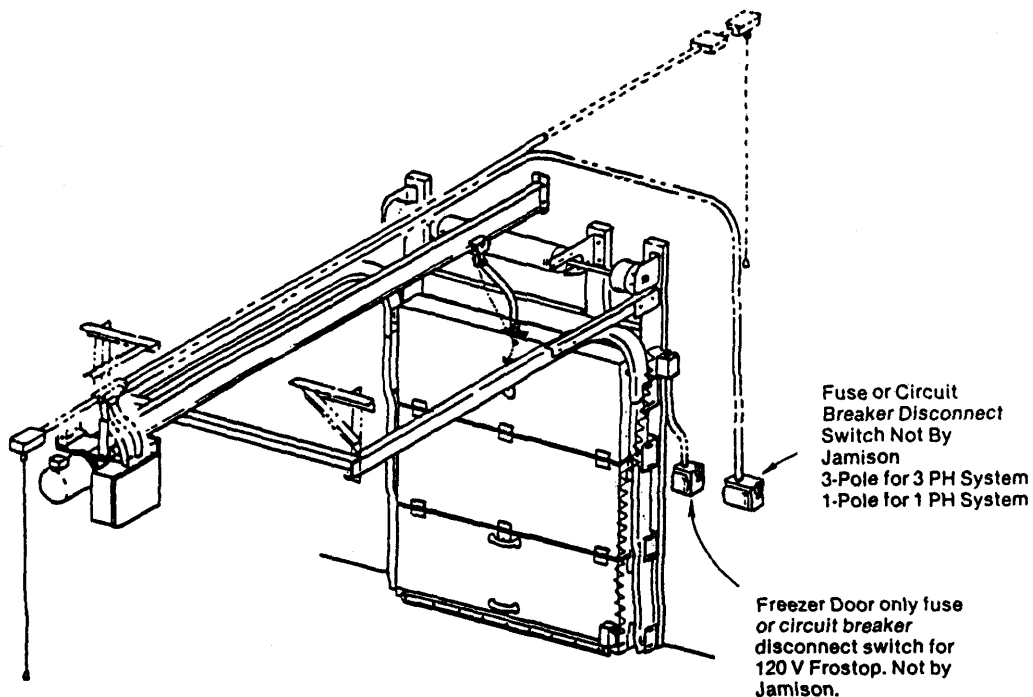




- A—Control Box
 B—Frame Mounted Junction Box
 C—Door Junction Box
 D—*Optional Padlocking Switch



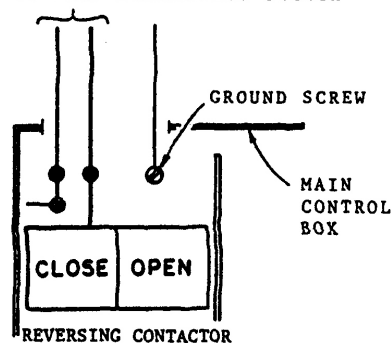
POWER SUPPLY CONNECTIONS



MAIN POWER CONNECTION
208/240/480 V.A.C.,
3-PHASE SYSTEM

CHECK MOTOR ROTATION: Right side of motor starter relay must open door. If not, reverse any two (2) leads above. This will correct problem. See page 6.

120/240 V.A.C., 1-PHASE POWER SUPPLY THRU DISCONNECT SWITCH



MAIN POWER CONNECTION
120/240 V.A.C., 1 PHASE SYSTEM

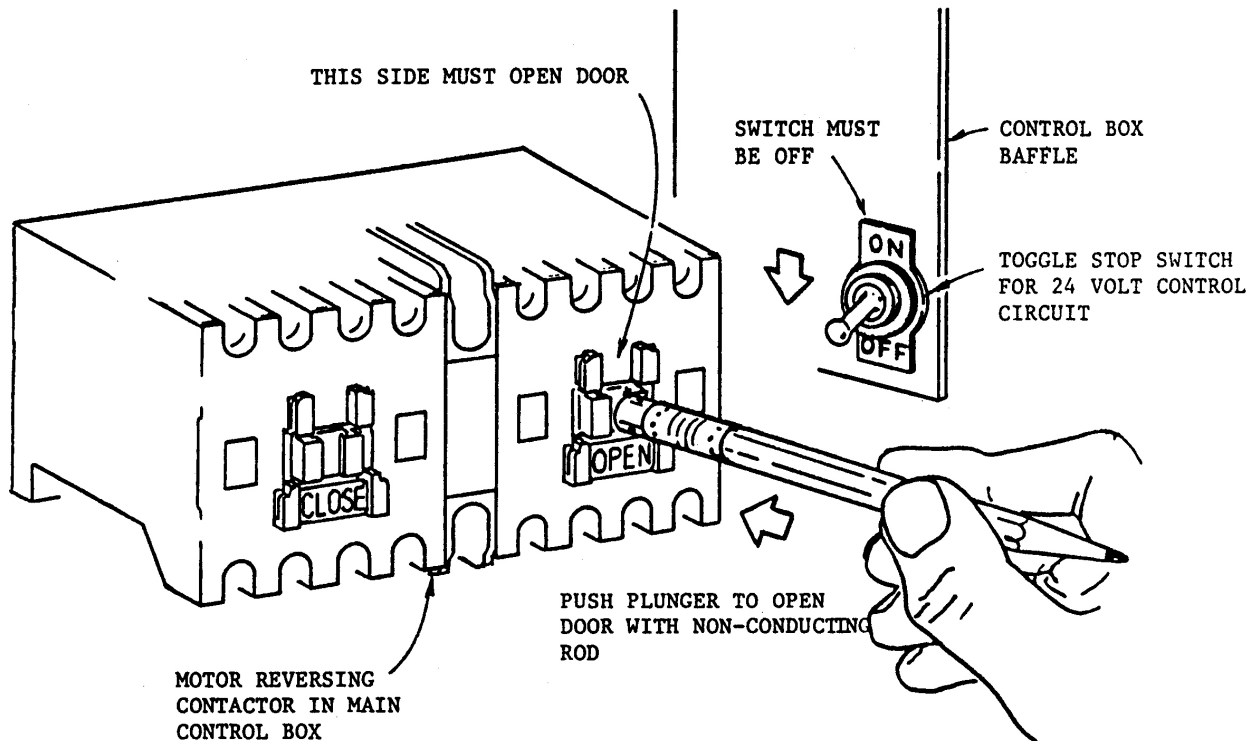
CAUTION: Do not operate door until electric check-out is made. See page 6.

TEST OPERATION UNDER POWER

- A. ENGAGE DOOR TO DRIVE LINK BEFORE MAKING ELECTRICAL CONNECTIONS OUTLINED BELOW:
- B. WARNING: MAKE SURE TOGGLE STOP SWITCH IS IN OFF POSITION.
- C. TURN ON MAIN POWER SUPPLY TO DOOR OPERATOR.
- D. CHECK MOTOR ROTATION: (3-PHASE ONLY) 1- PHASE PROCEED TO STEP 3.

STEPS:

1. MOMENTARY DEPRESS RIGHT SIDE OF MOTOR REVERSING CONTACTOR INSIDE MAIN CONTROL PANEL WHILE OBSERVING DOOR. DOOR MUST OPEN.
2. DOOR TRAVEL:
 - A. IF DOOR RUNS OPEN PROCEED TO STEP NO. 3.
 - B. IF DOOR CLOSES YOU HAVE REVERSE ROTATION OF MOTOR. TO CORRECT, TURN OFF MAIN POWER SUPPLY AND REVERSE ANY TWO (2) LEADS OF INCOMING POWER SUPPLY. CHECK BY REPEATING STEP #1 ABOVE.
3. AFTER CHECKING MOTOR ROTATION - TURN STOP SWITCH TO ON POSITION.

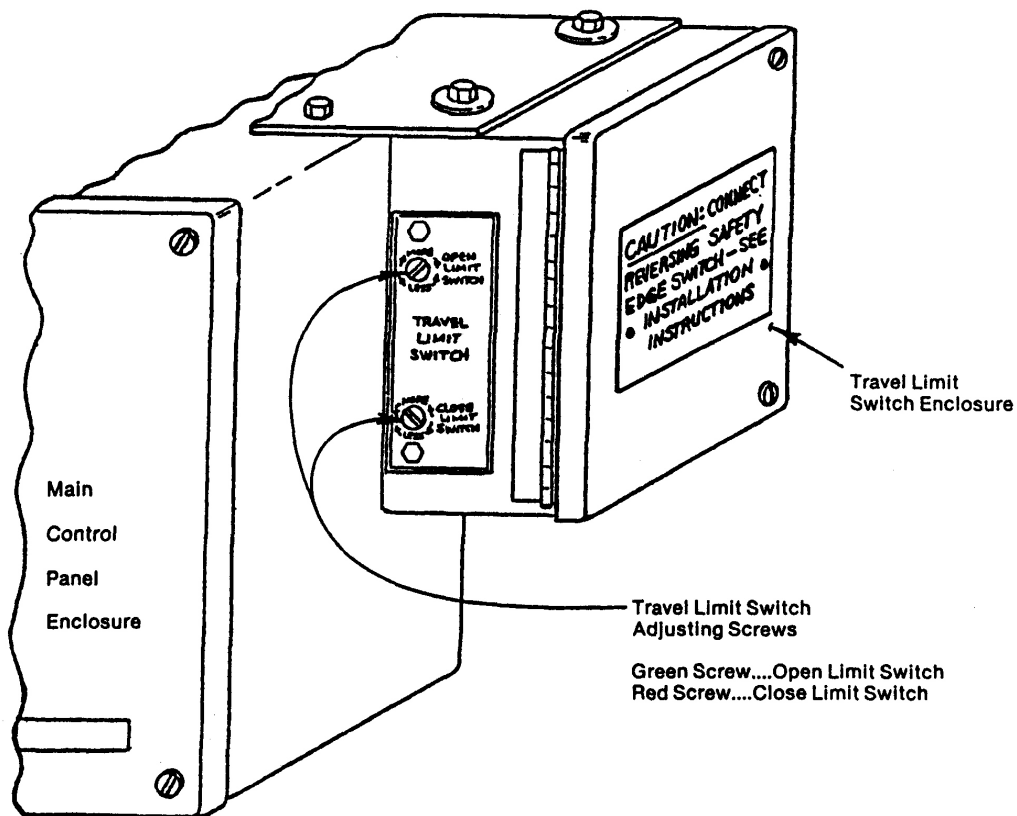


CAUTION: IF TEMPORARY ELECTRICAL HOOK-UP IS MADE, MAKE SURE MOTOR ROTATION IS NOT CHANGED WHEN PERMANENT POWER IS CONNECTED.

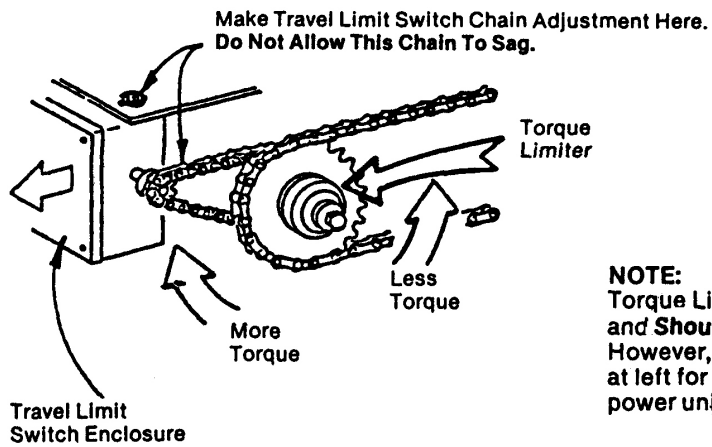
TO ADJUST TRAVEL LIMIT SWITCH

STEPS:

1. Operate door manually first. If door is not rolling smoothly on track or is binding: resolve problem then proceed with step number 2.
2. Operate door under power to determine amount of over-travel or under-travel, if any. Make proper limit switch adjustment per instructions on outside label of enclosure, see drawing below. Screw driver type adjustment can be made without removing enclosure cover as shown. Start with no more than 1/4 turn.... then precede until proper travel is achieved. Adjustment should be such that door will coast to a full open or closed position without slamming into door stops.



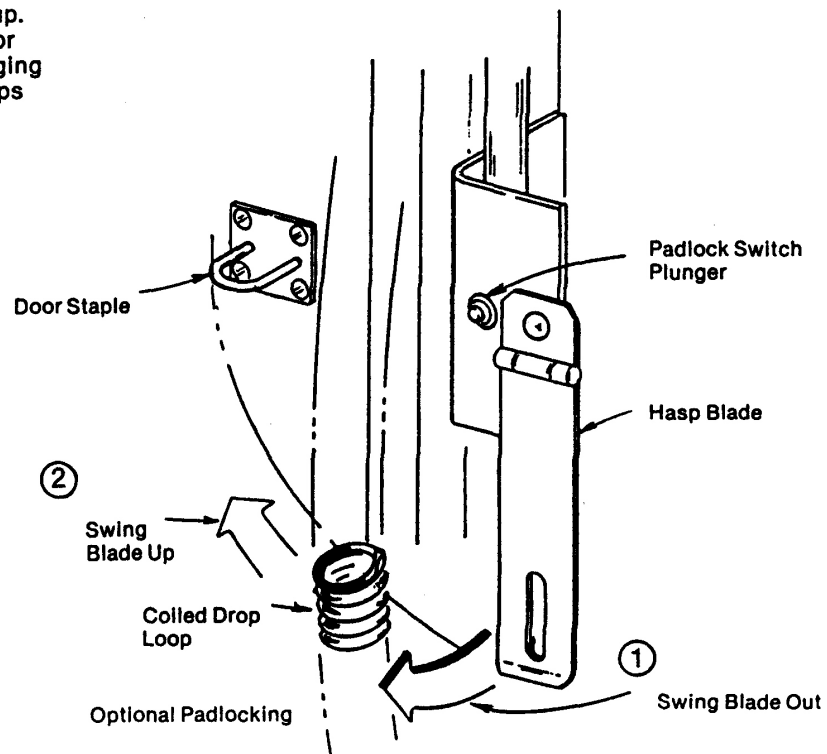
TRAVEL LIMIT SWITCH ADJUSTMENT

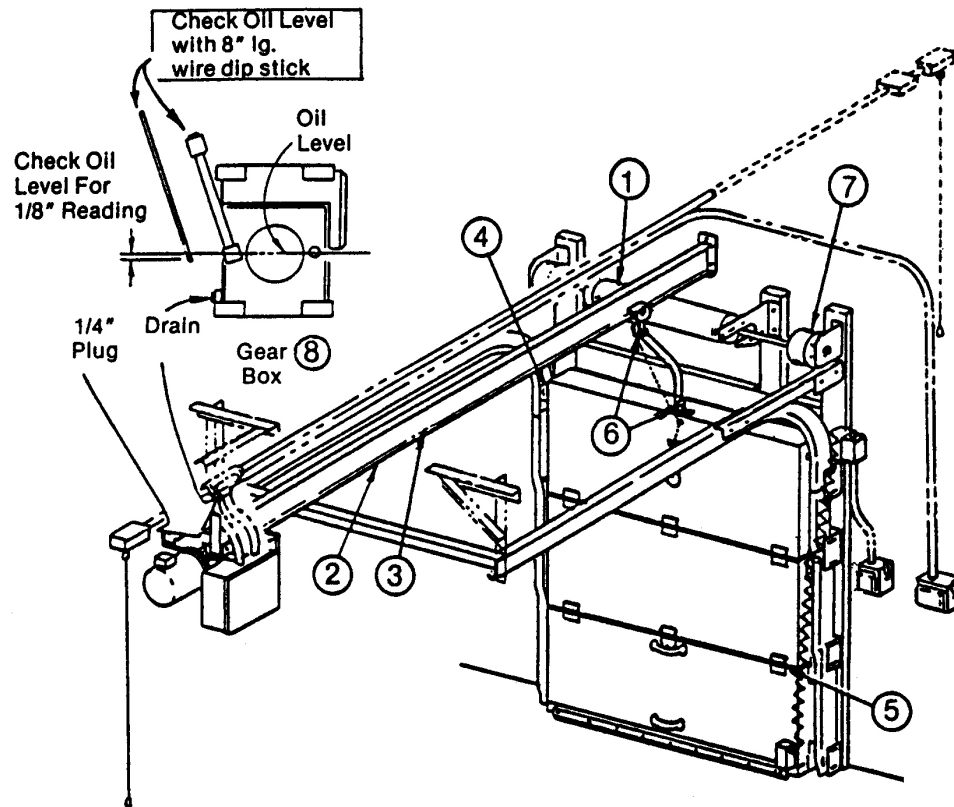


NOTE:
Torque Limiter is pre-set at factory and **Should Not** need adjustment. However, if necessary, see drawing at left for more or less torque for power unit driving force.

TORQUE LIMITER AND TRAVEL LIMIT SWITCH CHAIN ADJUSTMENTS

TO LOCK:
Swing blade out, then up.
Dress blade behind door coiled drop loop. Engaging hasp blade to staple trips padlock switch.





LUBRICATION INSTRUCTIONS
LUBRICATE AT 3 MONTH INTERVALS
GREASE — TO BE GOOD GRADE OF LITHIUM BASE GREASE
OIL — TO BE GOOD GRADE OF S.A.E. 30 NON DETERGENT MOTOR OIL

- 1 Torsion Spring - Oil
- 2 Guide Rail - Grease
- 3 Roller Chain - Oil
- 4 Rollers - Oil
- 5 Hinges - Oil
- 6 Lifting Link Pivots - Oil
- 7 Lifting Cables - Apply Wire Rope Lubricant
- 8 Gear Box Oil Level, Use Mobil S-H-C #626 or Equal
Check at 6 Month Intervals

ELECTRICAL TROUBLE SHOOTING GUIDE

NOTE: Door must roll freely without any drag or binding during manual operation check.

CAUTION: Prior to the following electrical check-out, door must be full open or full closed.

TROUBLE SHOOTING STANADRD POWER CIRCUIT AND DRIVE SYSTEM		
PROBLEM	PROBABLE CAUSE	REMEDY OR CHECK
A. Door will not run.	<ol style="list-style-type: none"> 1. No power to door. 2. Stop switch in off position. 3. Pull cord switches. 4. Door in mid travel. 	<ol style="list-style-type: none"> 1. Connect main power supply to door. 2. Turn stop switch on. 3. Check wires #9 and #10. 4. Depress Reversing Edge.
B. Door opens or closes approximately 6" then stops.	<ol style="list-style-type: none"> 1. Defective hold Switch on Reversing starter. 2. Open or Closed limit switch defective. 	<ol style="list-style-type: none"> 1. Replace switch on starter. 2. Replace travel limit switch.
C. Door will not close, opens O.K.	<ol style="list-style-type: none"> 1. Defective reversing edge (shorted) 	<ol style="list-style-type: none"> 1. Repair or replace reversing edge assembly as necessary.
D. Door will not open by reversing edge.	<ol style="list-style-type: none"> 1. Defective reversing edge. 2. Drop-loop wire broken. 	<ol style="list-style-type: none"> 1. Repair or replace reversing edge assembly as necessary. 2. Replace drop-loop wire.
E. 3-phase Powertron units, door travels in wrong direction, door closes by reversing edge.	<ol style="list-style-type: none"> 1. Check motor rotation. 	<ol style="list-style-type: none"> 1. Reverse any 2-leads of main power supply.
F. Door over travels or under travels.	<ol style="list-style-type: none"> 1. Travel limit switch adjustment. 	<ol style="list-style-type: none"> 1. Re-adjust so door coasts into desired position.
G. Power unit runs (will not move door) and motor running light is on.	<ol style="list-style-type: none"> 1. Binding in drive. 2. Torque limiter. 	<ol style="list-style-type: none"> 1. Turn off power, check door manually. 2. Turn off power then tighten (if required) so that door will run smoothly without a jerky operation. See torque limiter adjustment.

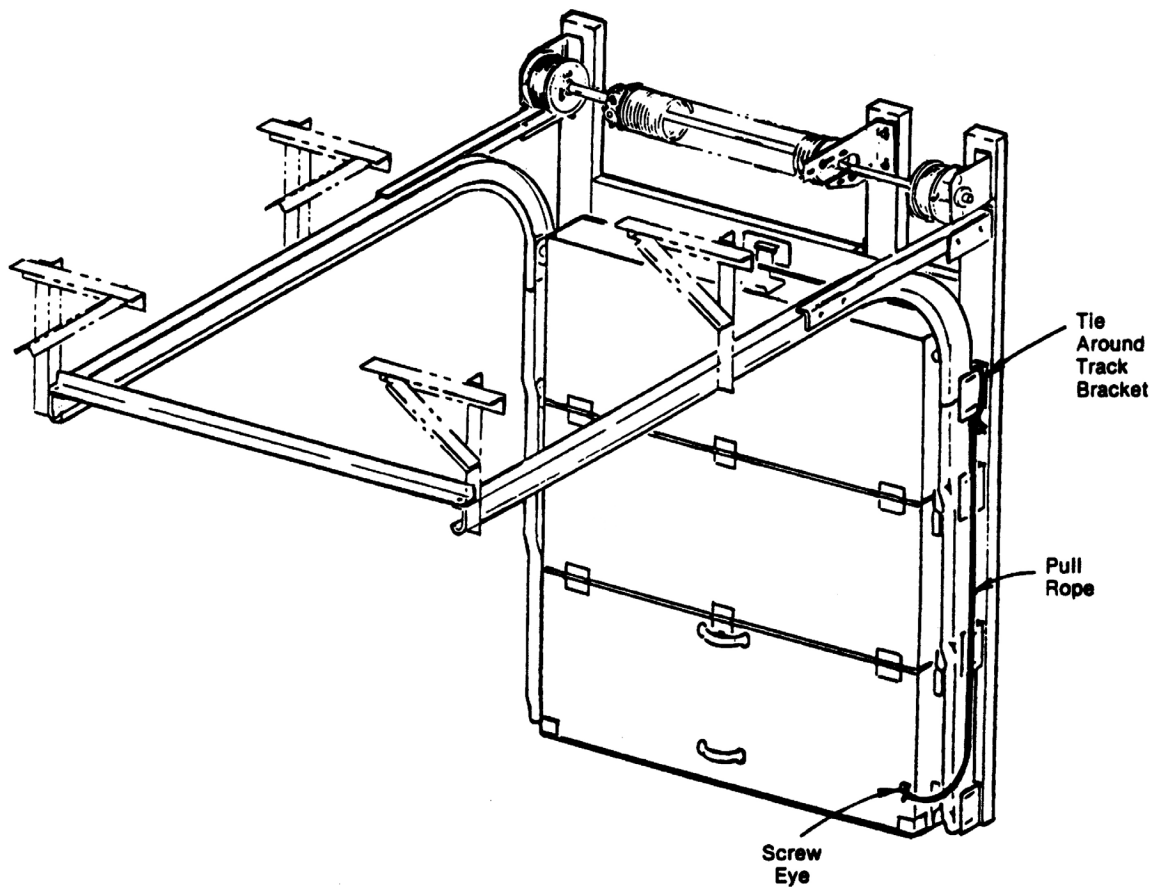
TEST OPERATION UNDER POWER

1. Thoroughly test door following “instructions for operation”.
 - a. If the door is not functioning properly, carefully recheck the installation procedure.
 - b. If you cannot resolve the difficulty, call “Service Engineer” at Hagerstown, Maryland (301-733-3100).

HAVE ALL INSTRUCTIONS IN FRONT OF YOU.

IMPORTANT: In all communications, please state the door “Model number”, “Serial number” and “Series letter” found on the master label plate on the front of the control panel.

MODEL No.	<input type="text"/>		
SERIAL No.	<input type="text"/>	SERIES	<input type="text"/>
POWER OPERATOR DATA		<input type="text"/>	VOLTS AC
PHASE	<input type="text"/>	HZ	<input type="text"/>
		AMPS	<input type="text"/>
RATING	<input type="text"/>	FOOT LBS. PER SECOND	
24 VOLT CONTROL CIRCUIT			
FROSTOP DATA:		120 VOLTS A.C.	
TOTAL AMPS	<input type="text"/>	TOTAL WATTS	<input type="text"/>
JAMISON DOOR COMPANY P. O. BOX 70 HAGERSTOWN, MARYLAND 21741			

**STEPS:**

1. Attach nylon pull rope to screw eye and track bracket as shown.
2. Lubricate all moving parts, including torsion springs, of hardware periodically (as frequently as required for friction free operation.)
3. Retighten all hardware and fastenings.
4. Check door for proper operation and gasket seal and make any adjustments as necessary.

FINAL CHECK-OUT