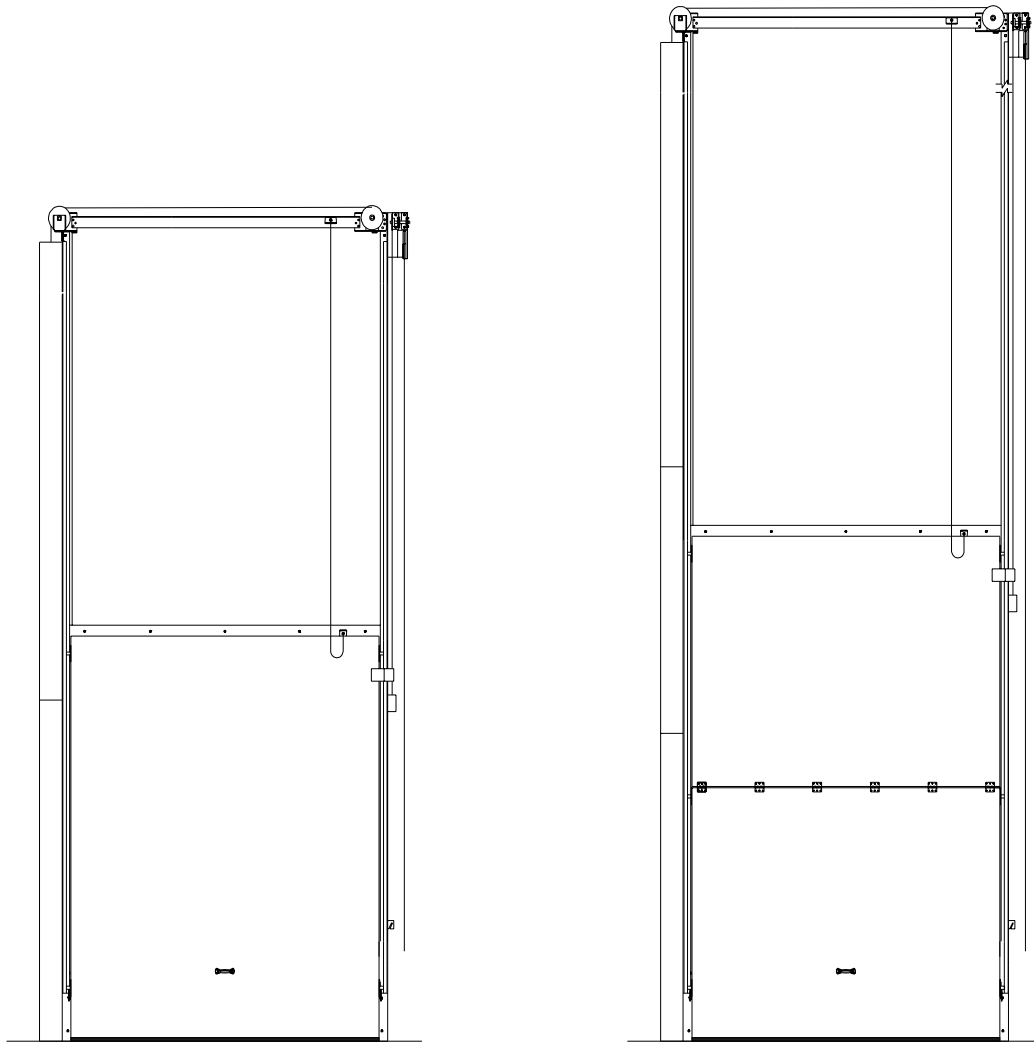


JAMISON

INSTALLATION INSTRUCTIONS FOR MARK IV HEAVY DUTY VERTICAL SLIDING MANUAL SPLIT DOOR WITH CHAINFALL OPERATOR

**AFTER INSTALLING DOOR FORWARD TO
MAINTENANCE DEPARTMENT OR OWNER**



JAMISON DOOR COMPANY

P.O. BOX 70
HAGERSTOWN, MARYLAND 21741
USA
(1-800-532-3667)
INTERNET: <http://www.jamisondoor.com>
E-MAIL: sales@jamisondoor.com

H4406553A S/N 996535

CONTENTS

	PAGE
GENERAL INFORMATION	3
CASING INSTALLATION	4
CASING INSTALLATION (FREEZER WITH HEAT IN FRAME OPTION)	7
PLACING DOOR INTO TRACK	8
RIGGING DETAILS FOR COUNTERWEIGHT	9
COUNTERWEIGHT BOX ASSEMBLY	11
DOOR AND GASKET ADJUSTMENTS	12
PULL ROPE AND “FROSTOP” HOOK-UP	14
LUBRICATION	15

GENERAL INFORMATION:

A. CONTENTS OF CRATES AND CARTON

1. FRAME COMPONENT PARTS AND ASSEMBLIES SHIPPED KNOCKED-DOWN.
NOTE: IF FRAME HAS JAMBS, CASING AND JAMBS ARE SHIPPED IN SEPARATE CRATE.
2. ONE CRATE CONTAINING DOOR LEAVES WITH ALL COMPONENTS PARTS AND ASSEMBLIES ATTACHED.
3. ONE CARTON CONTAINING:
 - a. PACKING LIST ITEMS
 - b. INSTALLATION INSTRUCTIONS

B. INSPECT FOR DAMAGE AND SHORTAGE IMMEDIATELY

1. NOTE ON ALL COPIES OF DELIVERY RECEIPT ANY APPARENT DAMAGES AND SHORTAGES.
2. OPEN ALL SHIPPING CONTAINERS AND INSPECT FOR CONCEALED DAMAGE AND SHORTAGES. CAREFULLY REPACK TO PREVENT DAMAGE AND PILFERAGE.
3. REPORT **WITHIN 15 DAYS** IN WRITING TO TRANSPORTATION COMPANY, WITH A COPY TO JAMISON DOOR, ANY CONCEALED DAMAGE AND SHORTAGES. AFTER 15 DAYS, LAWS PERMIT THE TRANSPORTATION COMPANY TO REJECT ALL CLAIMS.

C. HANDLE ALL PARTS CAREFULLY

1. CERTAIN PARTS SUCH AS GASKET, ETC. ARE VULNERABLE.

D. READ ALL INSTRUCTIONS BEFORE PROCEEDING WITH INSTALLATION

1. INSTRUCTIONS INCLUDE BASIC DRAWINGS FOR ALL DOORS TYPES.
2. USE DRAWINGS APPLICABLE TO YOUR DOOR.
3. REFER TO JOB DRAWINGS FOR SPECIAL FEATURES.

E. PLAN AHEAD

1. CHOOSE INSTALLERS WHO ARE MILLWRIGHTS OR HAVE EQUAL QUALIFICATIONS.
2. HAVE ALL TOOLS AND MATERIALS FOR INSTALLATION READILY AVAILABLE.

NOTE:

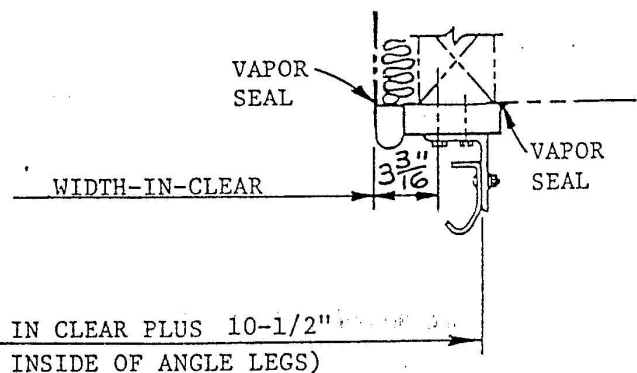
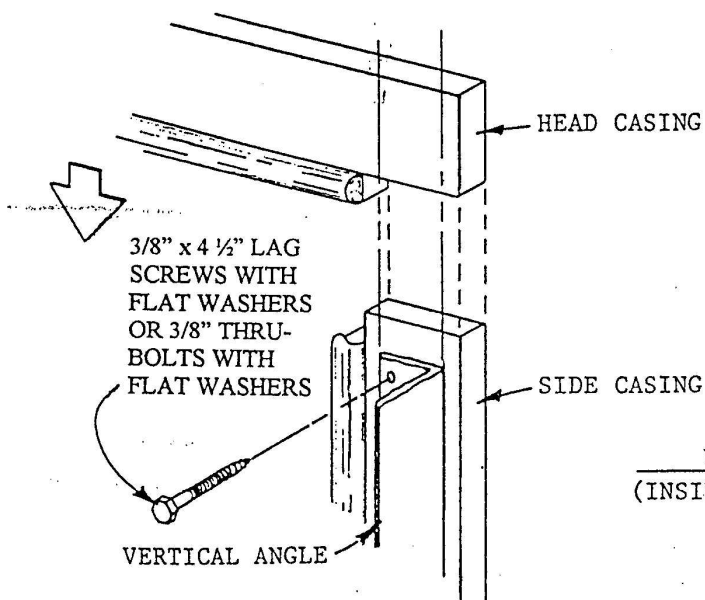
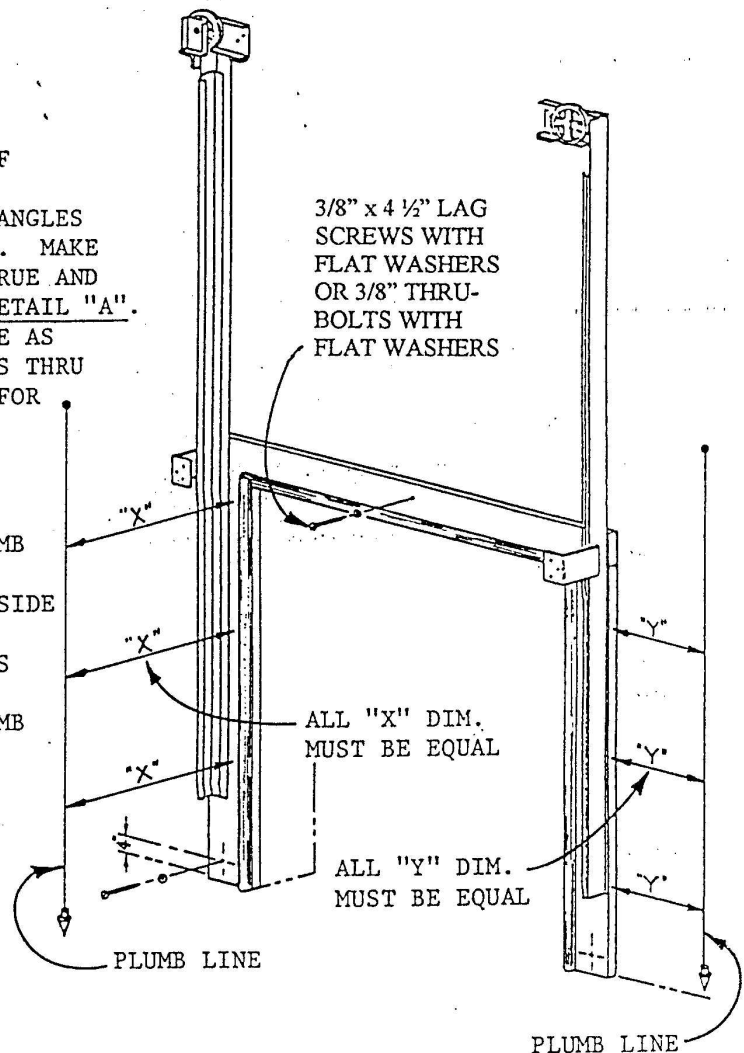
BUCKS FOR FRAME MUST BE PLUMB, TRUE AND SQUARE. FLOOR THROUGH DOOR OPENING MUST BE LEVEL FULL WIDTH TO PROVIDE PROPER DOOR OPERATION AND GASKET SEAL.

STEPS:

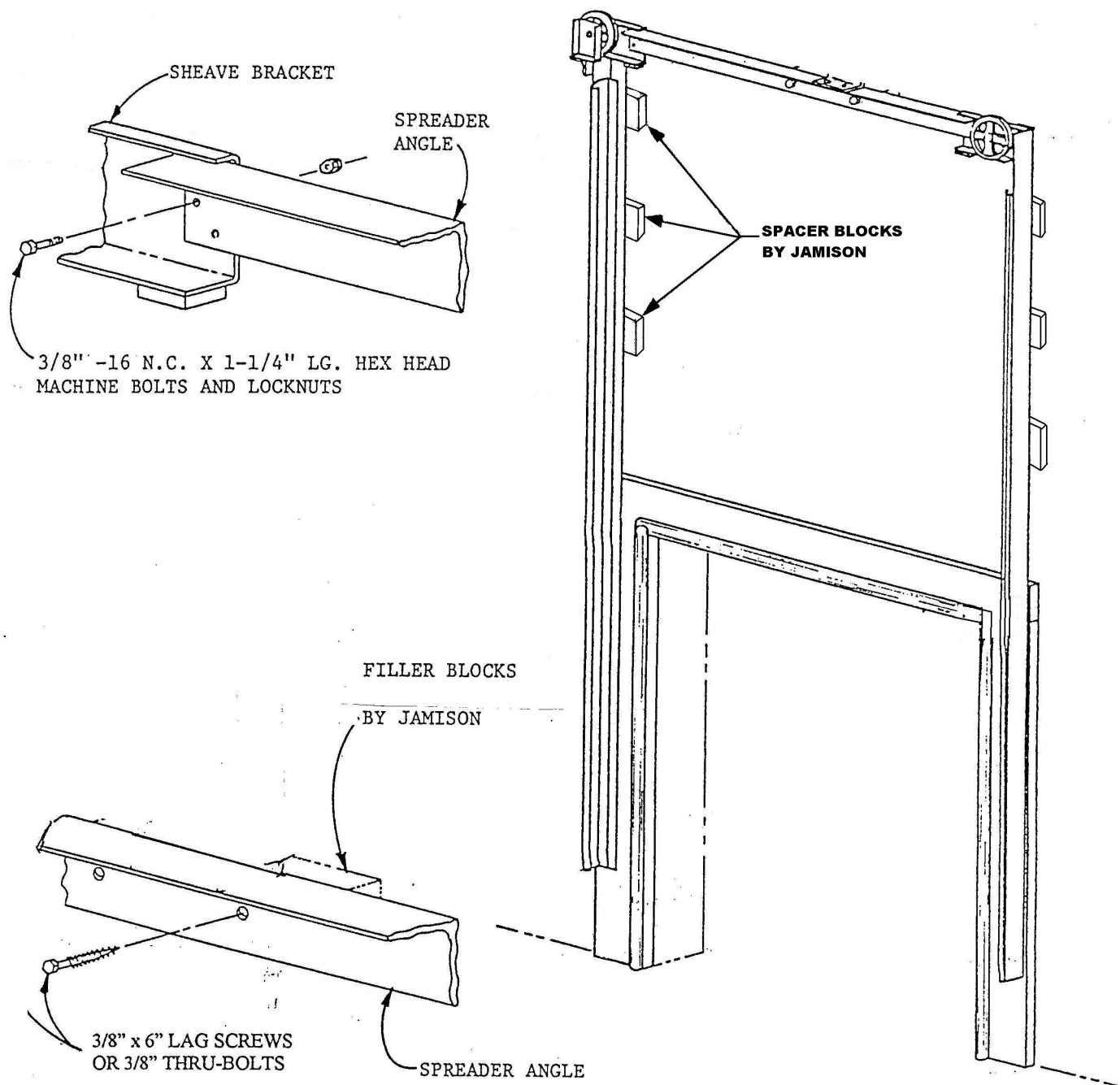
1. APPLY CAULKING COMPOUND TO BACK OF CASING MEMBERS.
2. BLOCK SIDE CASINGS WITH VERTICAL ANGLES ATTACHED AND HEAD CASING IN PLACE. MAKE SURE VERTICAL ANGLES ARE PLUMB, TRUE AND PARALLEL AND SPREAD AS SHOWN IN DETAIL "A". USE ROW OF HOLES NEAR TOE OF ANGLE AS TEMPLATE AND DRILL CLEARANCE HOLES THRU CASING AND PILOT HOLES INTO BUCK FOR 3/8" X 4-1/2" LG. LAG BOLTS.

NOTE: DO NOT DRILL HOLES IN HEAD CASING AT THIS TIME. INSTALL LAG BOLTS INTO BUCKS, SHIM CASING IF NECESSARY TO MAINTAIN A FLAT, PLUMB AND TWIST FREE CASING.

3. ATTACH HEAD CASING AND BOTTOM OF SIDE CASINGS TO BUCKS USING FLAT HEAD WOOD SCREWS WITH FINISHING WASHERS UNDER HEADS, SHIM CASING IF NECESSARY TO MAINTAIN A FLAT, PLUMB AND TWIST FREE CASING.



DETAIL "A"



INSTALL HORIZONTAL SPREADER ANGLE WITH IDLER SUPPORT BRACKET ATTACHED BY BOLTING TO SHEAVE BRACKETS. INSTALL FILLER BLOCK AT FASTENING LOCATIONS BETWEEN BUCK AND SPREADER ANGLE AND IDLER SUPPORT BRACKET. SELECT PROPER THICKNESS BLOCKS TO KEEP FROM PULLING SPREADER ANGLE OUT OF ALIGNMENT. MAKE SURE VERTICAL ANGLES ARE PLUMB. DRILL CLEARANCE HOLES THRU FILLER BLOCKS AND PILOT HOLES INTO BUCKS, INSTALL WALL BOLTS

UPPER SPREADER ANGLE ATTACHMENT

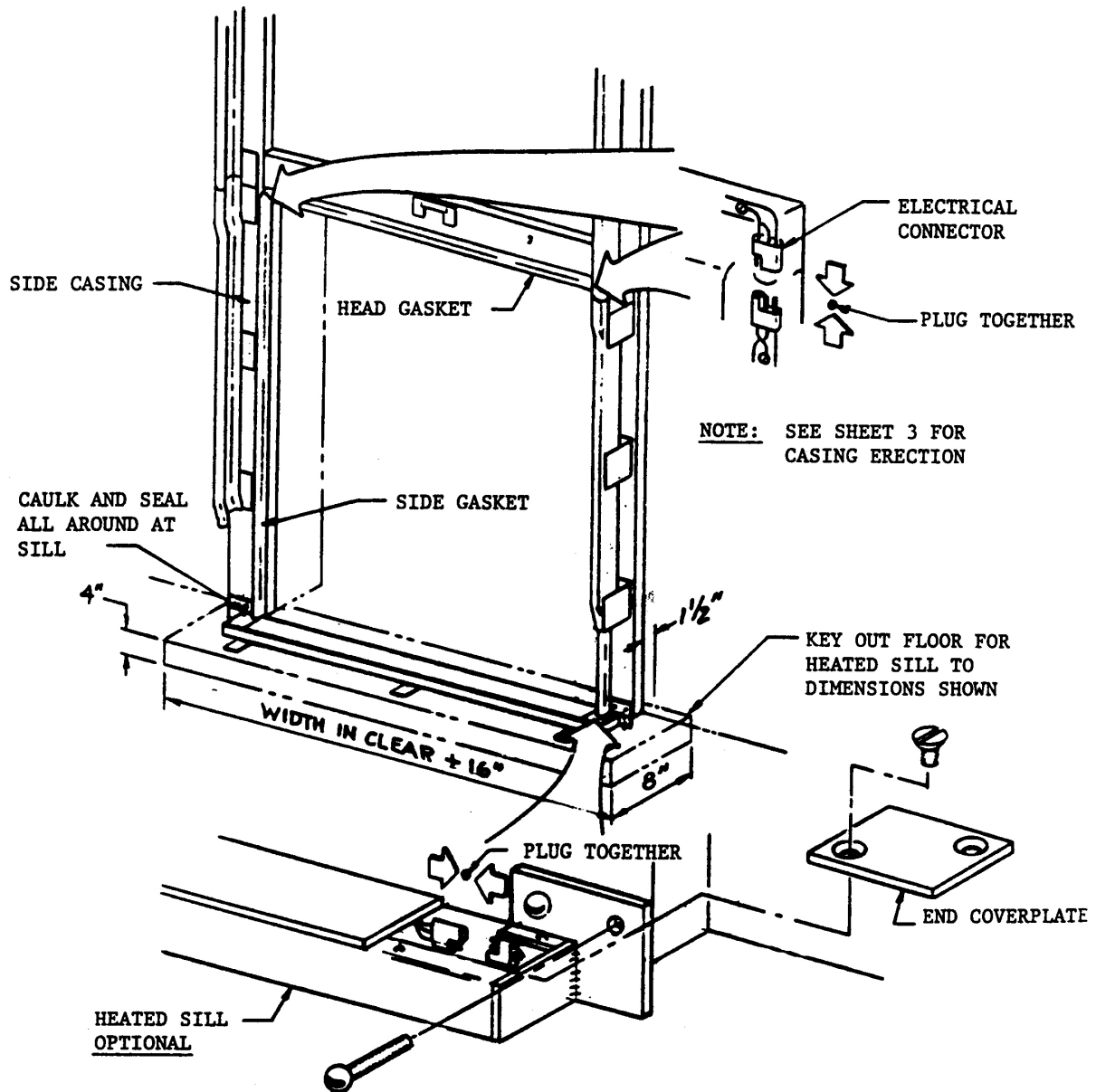
INSTALL FILLER BLOCKS BEHIND HOLES IN VERTICAL ANGLE ABOVE HEAD CASING. SELECT PROPER THICKNESS BLOCKS TO KEEP FROM PULLING VERTICAL ANGLE OUT OF PLUMB. USE HOLES IN VERTICAL ANGLES AS TEMPLATE AND DRILL CLEARANCE HOLES THRU FILLER BLOCKS AND PILOT HOLES THRU WALL . INSTALL BOLTS.

SPACER BLOCKS
1-1/2" X 4-1/2" X 12"
BY JAMISON

3/8" x 4 1/2" LAG
SCREWS WITH
FLAT WASHERS
OR 3/8" THRU-
BOLTS WITH
FLAT WASHERS

FILLER BLOCKS,
BY JAMISON

SECURING VERTICAL ANGLES TO BUCKS

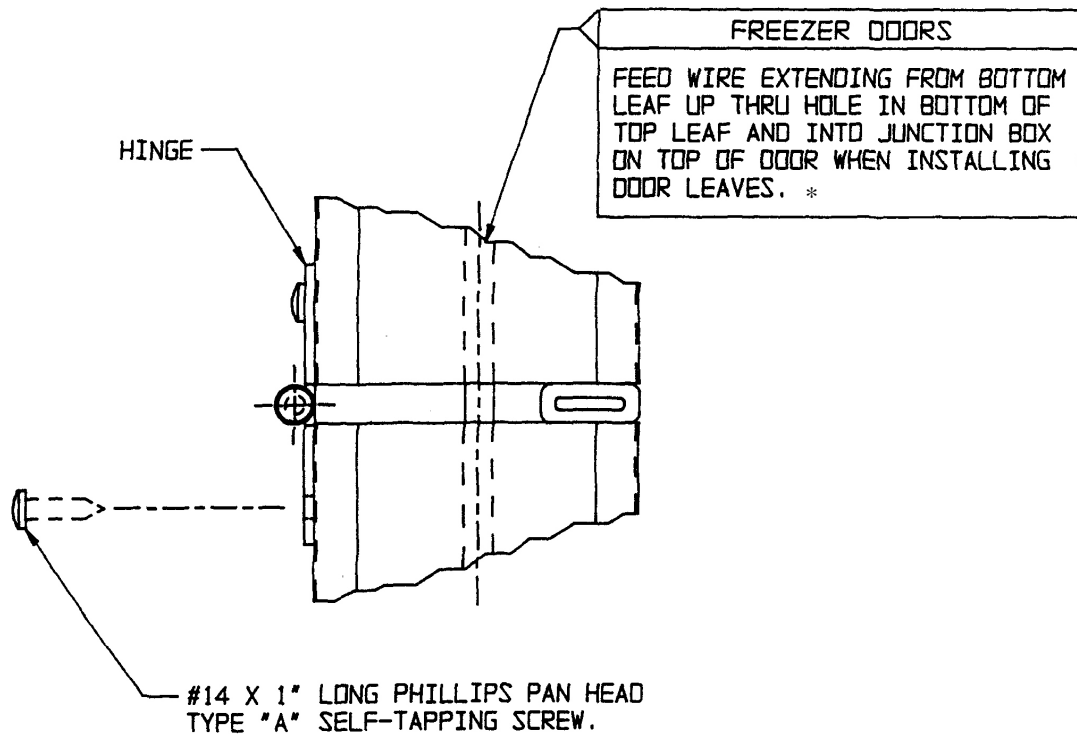
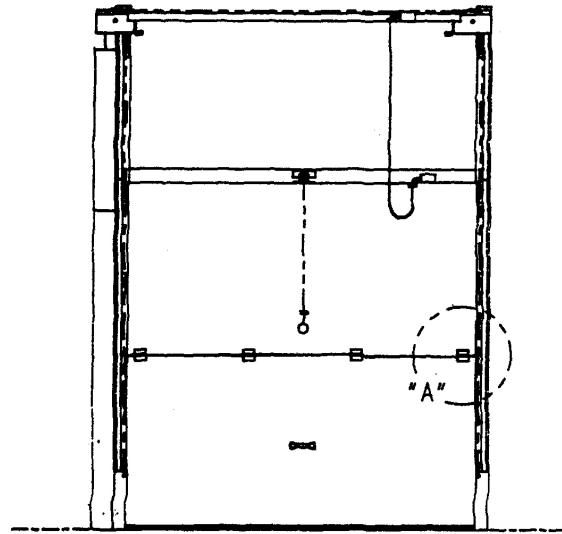
**STEPS:**

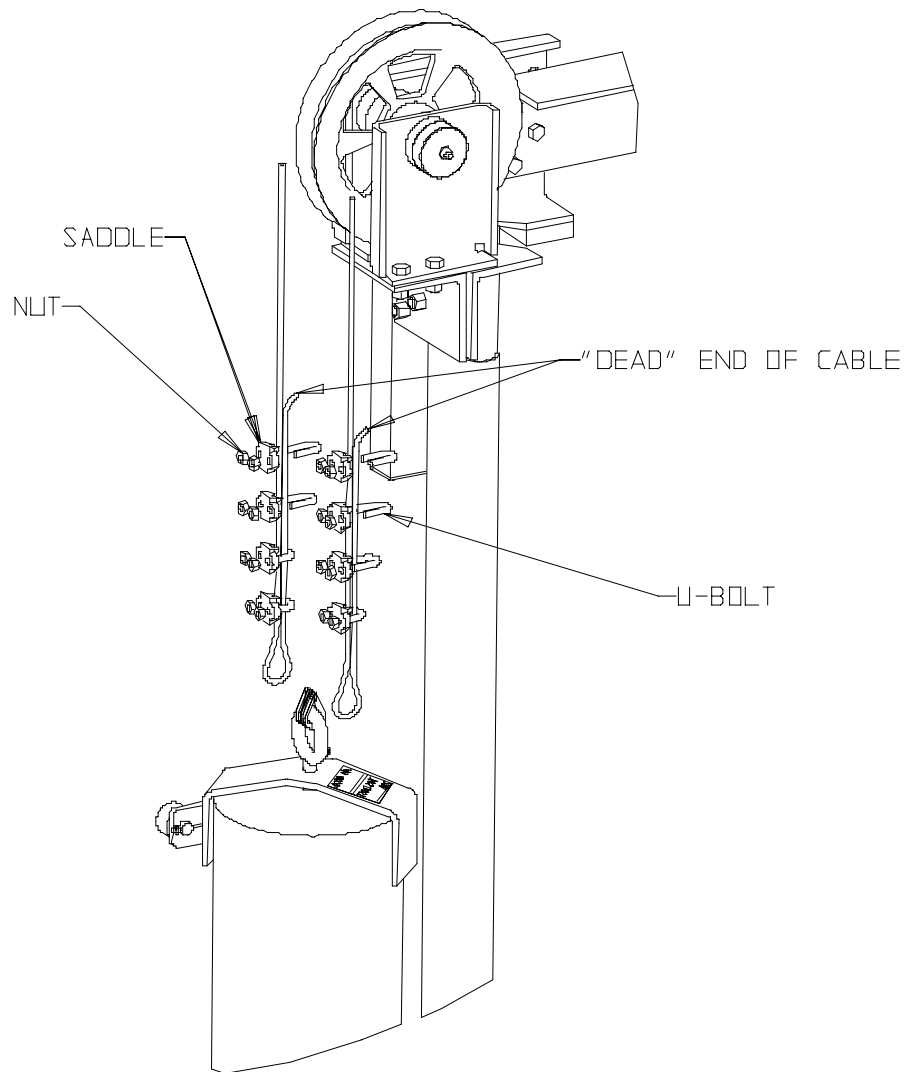
1. ATTACH HEATED SILL TO CASING WITH FASTENINGS PROVIDED. SILL ASSEMBLY MUST BE LEVEL AND TRUE FROM CASING TO CASING.
2. PLUG ELECTRICAL CONNECTOR TOGETHER AT FOUR CORNERS OF FRAME AS SHOWN.
3. INSTALL END COVERPLATES, CAULK AND SEAL TO EXCLUDE MOISTURE.
4. BRACE HEATED SILL SECURELY AND GROUT IN FINISHED CONCRETE FLOOR AROUND SILL.

CASING ERECTION (SPECIAL FREEZER)

STEPS:

1. TEMPORARILY REMOVE UPPER SECTION OF TRACK FROM TRACK BRACKETS.
2. LUBRICATE ROLLER SHAFTS AND INSERT ROLLERS INTO BRACKETS ON BOTTOM LEAF.
3. LIFT BOTTOM LEAF TO TOP OF VERTICAL TRACK, LOWER LEAF CAREFULLY TO FLOOR. INSTALL UPPER LEAF FOLLOWING SAME PROCEDURE LOWERING TO TOP OF LOWER LEAF.
4. ATTACH HINGE TO UPPER LEAF USING FACTORY DRILLED HOLES.
5. RE-INSTALL UPPER SECTION OF TRACK, ALIGNING WITH LOWER SECTION.
6. FREEZER DOOR ONLY SEE SHEET #9 FOR "FROSTOP" HOOK-UP.

DETAIL "A"PLACING DOOR IN TRACK



INSTALLER NOTE:

APPLY U-BOLT OVER DEAD END OF WIRE ROPE- LIVE END RESTS IN SADDLE.
 "NEVER SADDLE A DEAD HORSE".

1. INSTALL FIRST CLIP ONE BASE WIDTH FROM DEAD END OF ROPE TIGHTEN NUTS EVENLY, ALTERNATING FROM ONE NUT TO ANOTHER UNTIL REACHING TORQUE OF 7.5 FT-LBS.
2. APPLY SECOND CLIP NEAR LOOP END, TURN NUTS FIRMLY, BUT DO NOT TIGHTEN.
3. SPACE REMAINING CLIPS EVENLY BETWEEN THE FIRST TWO, TAKE UP ROPE SLACK, TIGHTEN NUTS ON EACH U-BOLT EVENLY, ALTERNATING FROM ONE NUT TO ANOTHER UNTIL REACHING TORQUE OF 7.5 FT-LBS.
4. APPLY LOAD TO TEST ASSEMBLY, CHECK AND RETIGHTEN NUTS TO RECOMMENDED TORQUE.
5. IN ACCORDANCE WITH GOOD RIGGING AND MAINTENANCE PRACTICES, INSPECT PERIODICALLY FOR WEAR, ABUSE, AND GENERAL ADEQUACY. REFER TO JAMISON OPERATING AND MAINTENANCE MANUAL OR CONTACT THE FACTORY.

H4406533A

SCALE 0.188

JAMISON DOOR COMPANY

P.O. BOX 70 HAGERSTOWN, MD 21741 1-800-532-3557 FAX 301-781-7339
www.jamisondoor.com

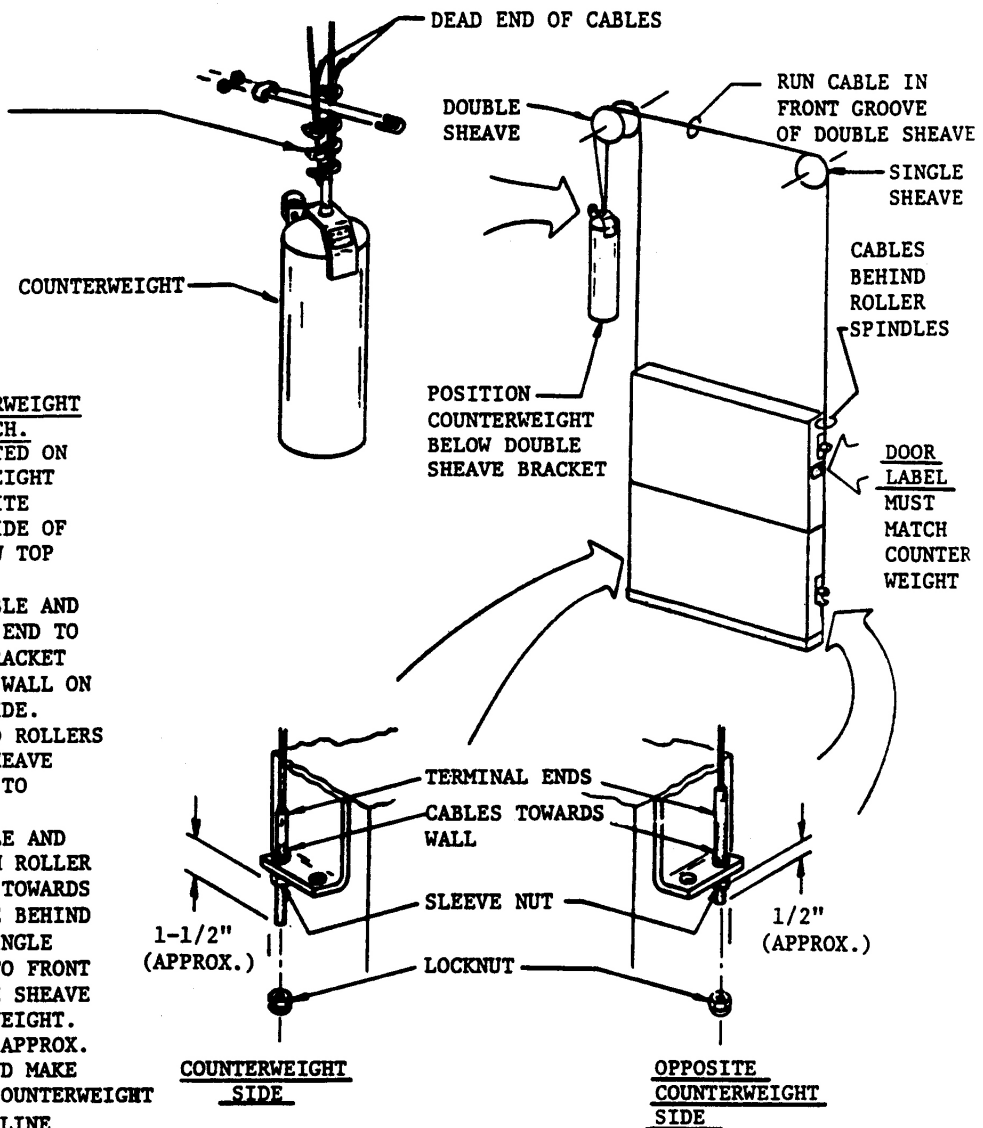
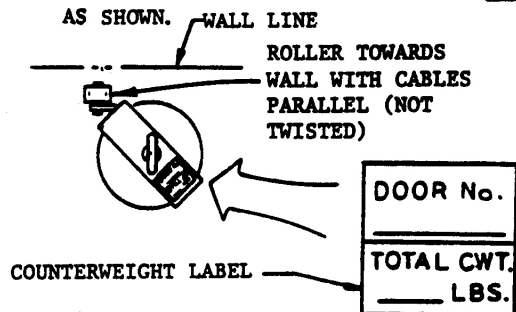
SHEET 1 of 1

CAUTION:

USE FOUR (4) CABLE CLAMPS PER CABLE. U-BOLT MUST BE PLACED OVER DEAD END SIDE OF CABLE AS SHOWN.

STEPS:

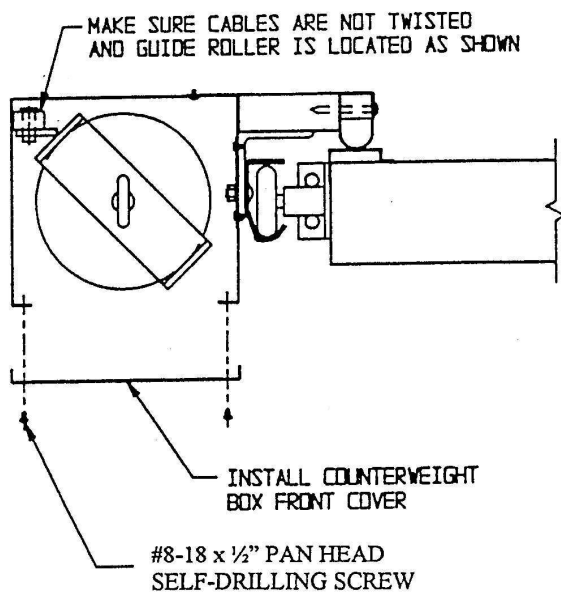
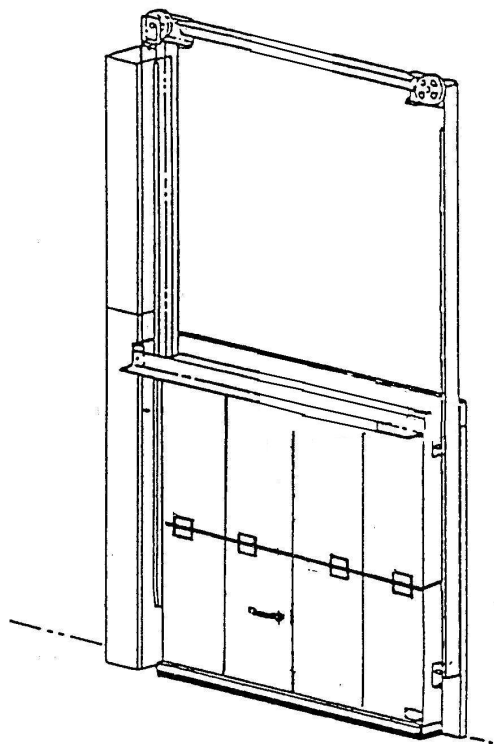
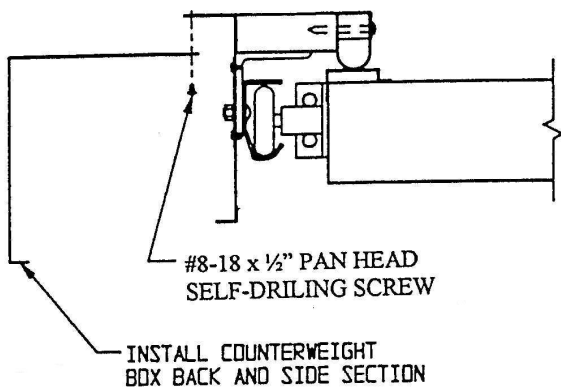
1. DOOR AND COUNTERWEIGHT LABELS MUST MATCH. LABELS ARE LOCATED ON TOP OF COUNTERWEIGHT STRAP AND OPPOSITE COUNTERWEIGHT SIDE OF DOOR PANEL BELOW TOP ROLLER BRACKET.
2. USE SHORTEST CABLE AND ATTACH TERMINAL END TO BOTTOM ROLLER BRACKET IN HOLE TOWARDS WALL ON COUNTERWEIGHT SIDE. RUN CABLE BEHIND ROLLERS AND OVER REAR SHEAVE GROOVE AND DOWN TO COUNTERWEIGHT.
3. USE LONGEST CABLE AND ATTACH TO BOTTOM ROLLER BRACKET IN HOLE TOWARDS WALL. RUN CABLE BEHIND ROLLERS, OVER SINGLE SHEAVE, ACROSS TO FRONT GROOVE OF DOUBLE SHEAVE DOWN TO COUNTERWEIGHT.
4. PULL CABLES FOR APPROX. EQUAL TENSION AND MAKE CONNECTIONS AT COUNTERWEIGHT AS SHOWN.

**STOP**

DOOR NUMBER AND TOTAL WEIGHT MUST MATCH BETWEEN DOOR AND COUNTERWEIGHT. DO NOT INSTALL IF NUMBERS OR WEIGHTS DO NOT AGREE. CALL JAMISON DOOR COMPANY FOR INSTRUCTIONS.

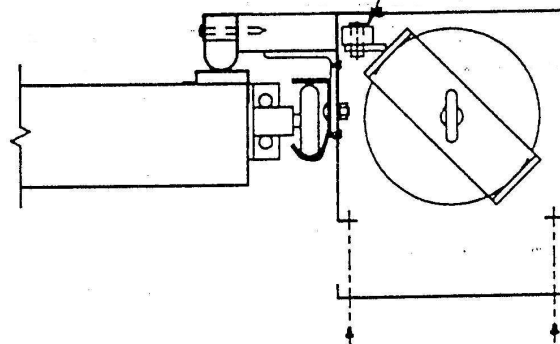
RIGGING DETAILS FOR L.H. COUNTERWEIGHT - R.H. COUNTERWEIGHT OPPOSITE

INSTALL COUNTERWEIGHT BOX USING
FACTORY DRILLED HOLES, BOX SECTIONS
ARE IDENTIFIED ON INSIDE AS TO BOTTOM,
CENTER AND TOP



LEFT HAND COUNTERWEIGHT ASSEMBLY

MAKE SURE CABLES ARE NOT TWISTED
AND GUIDE ROLLER IS LOCATED AS SHOWN

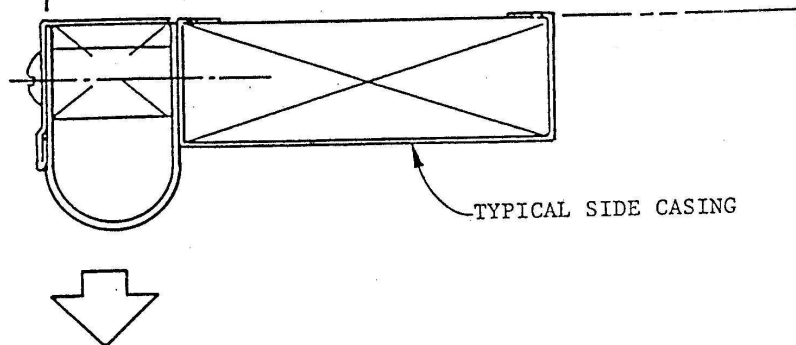


RIGHT HAND COUNTERWEIGHT ASSEMBLY

COUNTERWEIGHT BOX ASSEMBLY

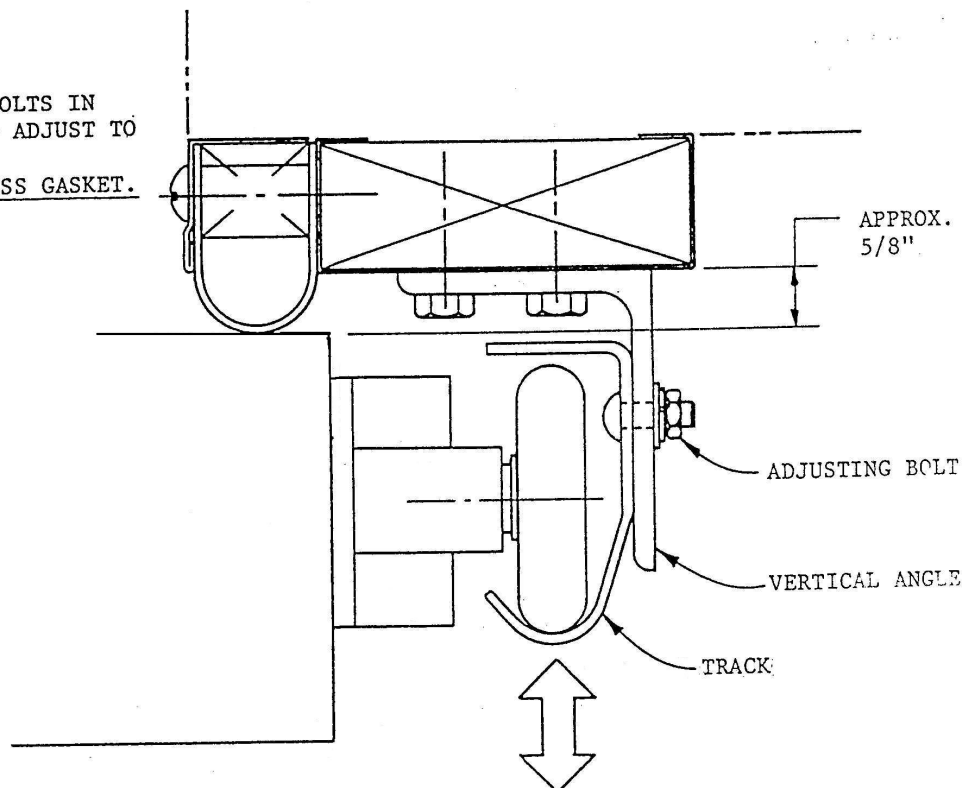
ADJUST GASKET

MOVE DOOR TO OPEN POSITION.
LOOSEN GASKET ATTACHMENT SCREWS,
PULL OUT GASKET AS REQUIRED TO
OBTAIN A GOOD GASKET SEAL
(APPROX. 1/8" COMPRESSION).
DO NOT OVER COMPRESS GASKET.
RE-TIGHTEN ATTACHMENT SCREWS.
CHECK FOR PROPER SEAL.



1 - SEALING GASKET ADJUSTMENT

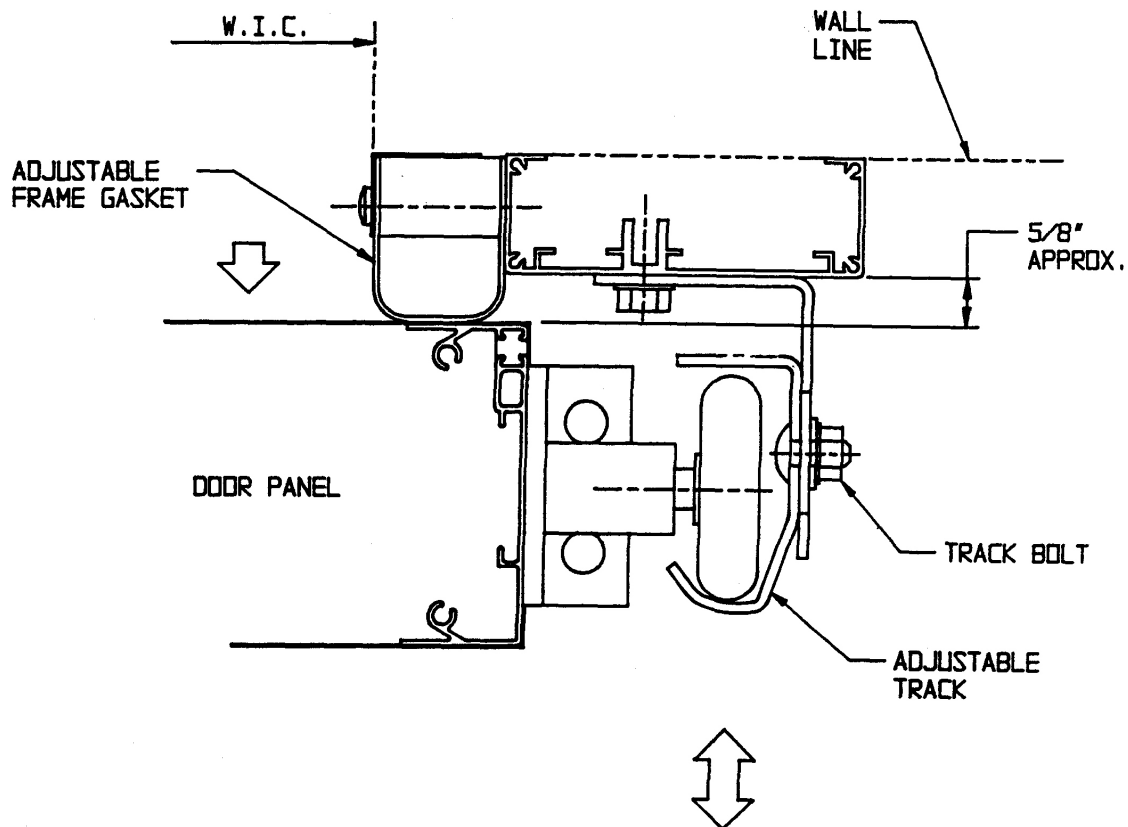
LOOSEN ADJUSTING BOLTS IN
VERTICAL ANGLE AND ADJUST TO
SUIT AS SHOWN.
DO NOT OVER COMPRESS GASKET.



2 - TRACK ADJUSTMENT

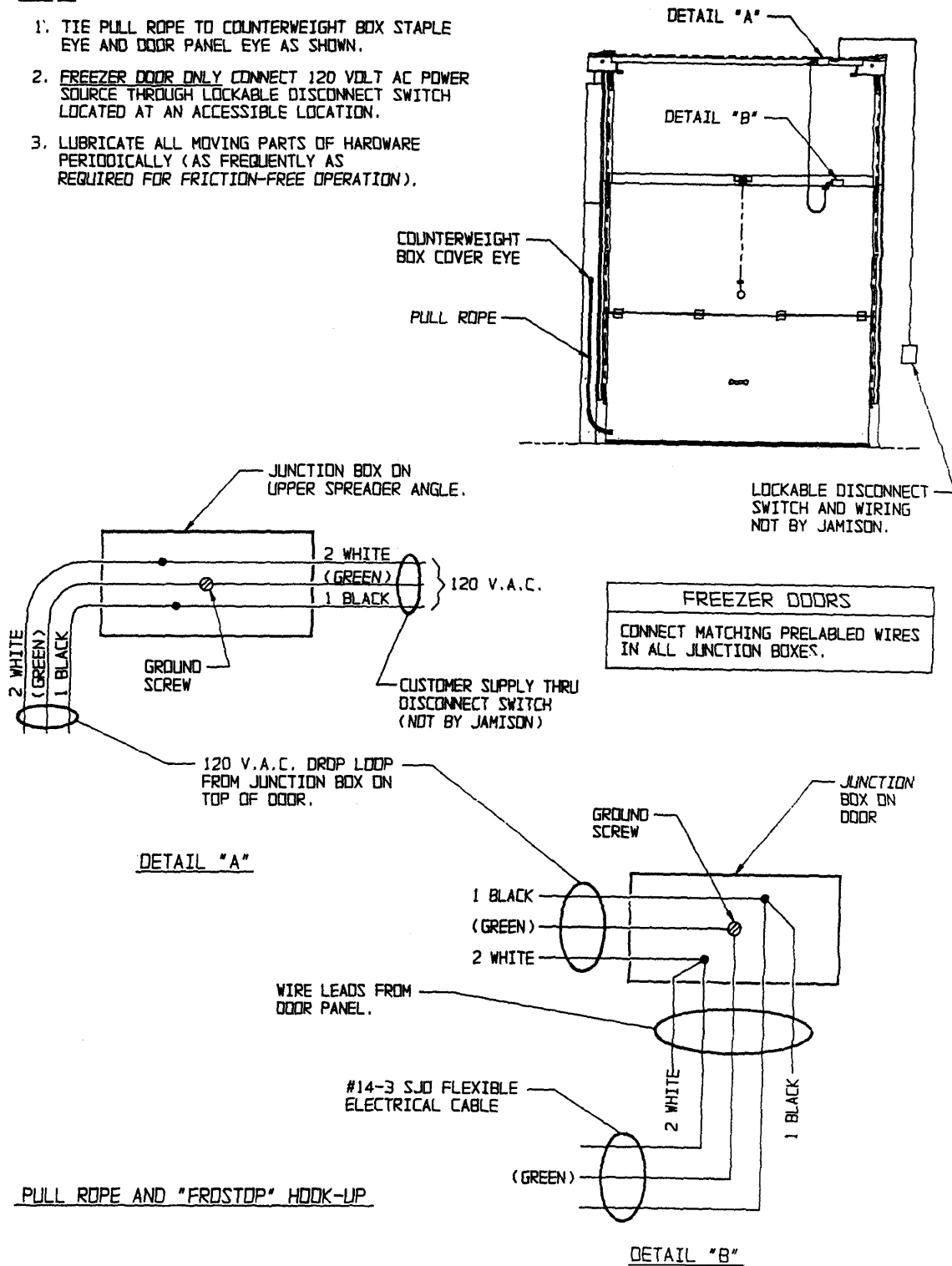
STEPS:

1. OPERATE DOOR MANUALLY TO CHECK FOR ANY BINDING OR ALIGNMENT PROBLEMS.
2. ADJUST DOOR FOR PROPER GASKET SEAL. LOOSEN TRACK FASTENINGS AND MOVE TRACK IN OR OUT AS REQUIRED TO ACHIEVE A GOOD GASKET SEAL. TIGHTEN ALL TRACK FASTENINGS. ADJUST FRAME GASKET IF REQUIRED.
3. ADJUST CABLE TERMINAL ENDS IF NECESSARY TO ACHIEVE A GASKET SEAL ACROSS SILL. SEE PAGE #6.

**DOOR AND GASKET ADJUSTMENTS**

STEPS:

1. TIE PULL ROPE TO COUNTERWEIGHT BOX STAPLE EYE AND DOOR PANEL EYE AS SHOWN.
2. FREEZER DOOR ONLY CONNECT 120 VOLT AC POWER SOURCE THROUGH LOCKABLE DISCONNECT SWITCH LOCATED AT AN ACCESSIBLE LOCATION.
3. LUBRICATE ALL MOVING PARTS OF HARDWARE PERIODICALLY (AS FREQUENTLY AS REQUIRED FOR FRICTION-FREE OPERATION).



LUBRICATION INSTRUCTIONSLUBRICATE AT 3 MONTH INTERVALSGREASE - TO BE GOOD GRADE OF LITHIUM BASE GREASE.OIL ---- TO BE GOOD GRADE OF S.A.E. 30 NON-DETERGENT MOTOR OIL.

- ① CABLE SHEAVES BEARINGS - GREASE
- ② SPROCKET BEARINGS - OIL
- ③ CHAIN LOCK - GREASE
- ④ ROLLER CHAIN - OIL
- ⑤ ROLLERS - OIL
- ⑥ LIFTING CABLES - APPLY WIRE ROPE LUBRICANT

- ⑧ HINGE KNUCKLES - OIL