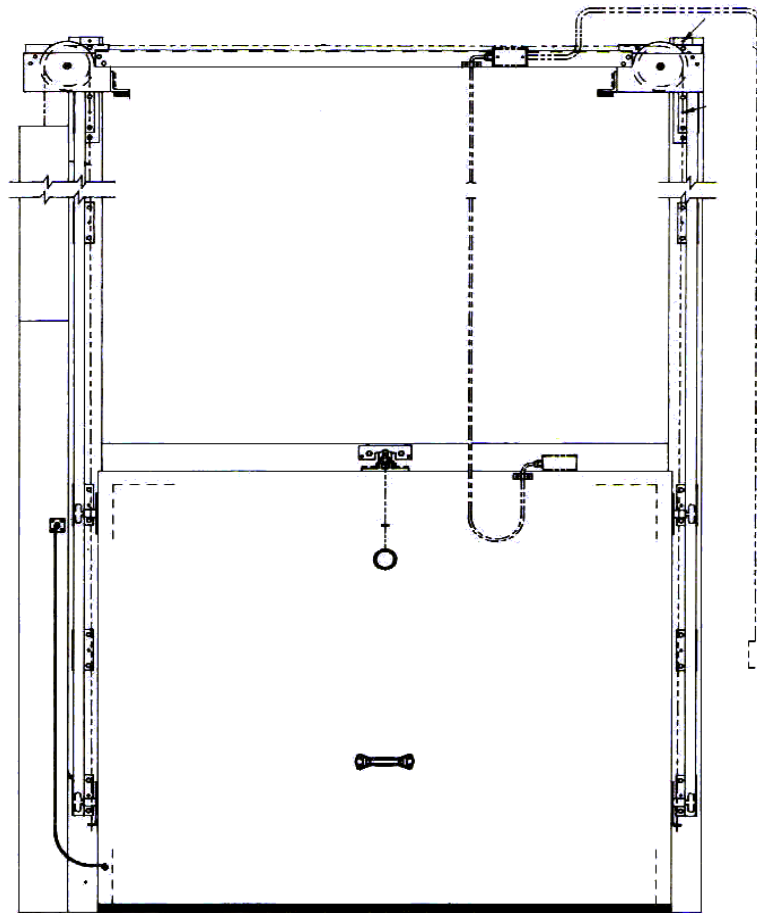


# INSTALLATION INSTRUCTIONS FOR MARK III / MARK IV VERTICAL SLIDING MANUAL DOOR

“AFTER INSTALLING DOOR FORWARD TO MAINTENANCE DEPARTMENT  
OR OWNER”



## JAMISON

JAMISON DOOR COMPANY  
P.O. BOX 70  
HAGERSTOWN, MARYLAND, 21741  
(1-800-532-3667)

S/N 996510  
DJ - 9032 - 14C

## INDEX SHEET

<u>INSTALLATION INSTRUCTIONS</u>	<u>PAGE</u>
GENERAL INFORMATION	1
MINIMUM CLEARANCES REQUIRED	2
CASING ERECTION	3
CASING ERECTION (SPECIAL FREEZER)	4
PLACING DOOR INTO TRACK	5
RIGGING DETAILS FOR COUNTERWEIGHT	6
COUNTERWEIGHT BOX ASSEMBLY	7
DOOR AND GASKET ADJUSTMENTS	8
PULL ROPE AND "FROSTOP" HOOK-UP	9

GERERAL INFORMATION:

## A. Contents of Crates and Carton

1. Frame component parts and assemblies shipped knocked-down.

NOTE: If frame has jambs, casing and jambs are shipped in separate crates.

2. One crate containing door leaf with all components, parts and assemblies attached.
3. One carton containing:
  - a. Packing List
  - b. Installation Instructions
  - c. Operating Instructions (If Power Operated Door)

## B. Inspect for Damage and Shortage Immediately

1. Note on all copies of delivery receipt any apparent damages and shortages.
2. Open all shipping containers and inspect for concealed damage and shortages. Carefully repack to prevent further damage and pilferage.
3. Report within 15 days in writing to the transportation company, with a copy to us, any concealed damage and shortages. **After 15 days, the law permits the transportation company to reject all claims.**

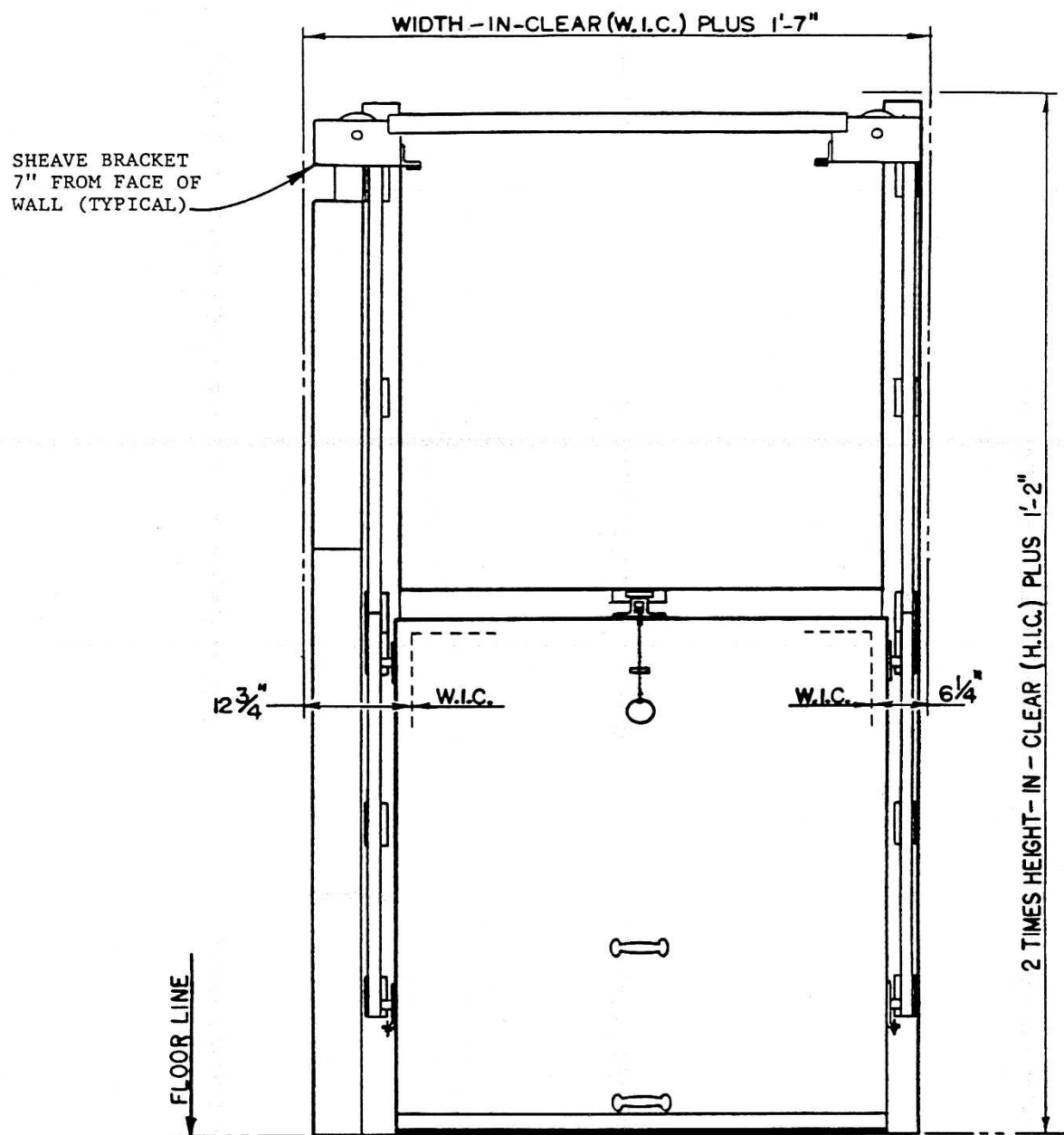
## C. Handle All Parts Carefully

1. Certain parts such as gaskets, wiring, reversing edges, etc. are vulnerable.

## D. READ ALL INSTRUCTIONS BEFORE PROCEEDING WITH ERECTION

## E. Plan Ahead

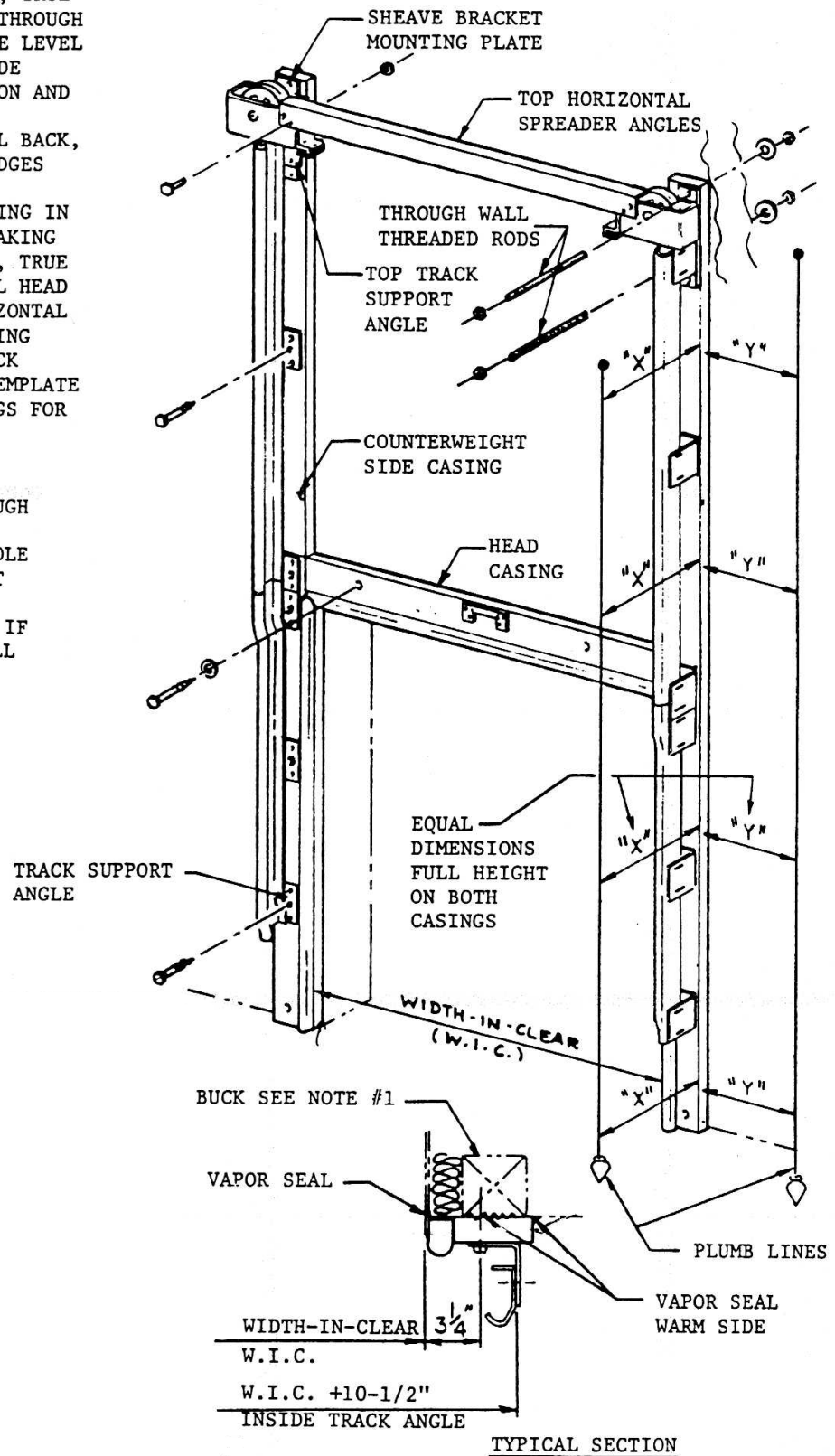
1. Choose installers who are millwrights or have equal qualifications.
2. Have all tools and materials necessary for installation readily available.



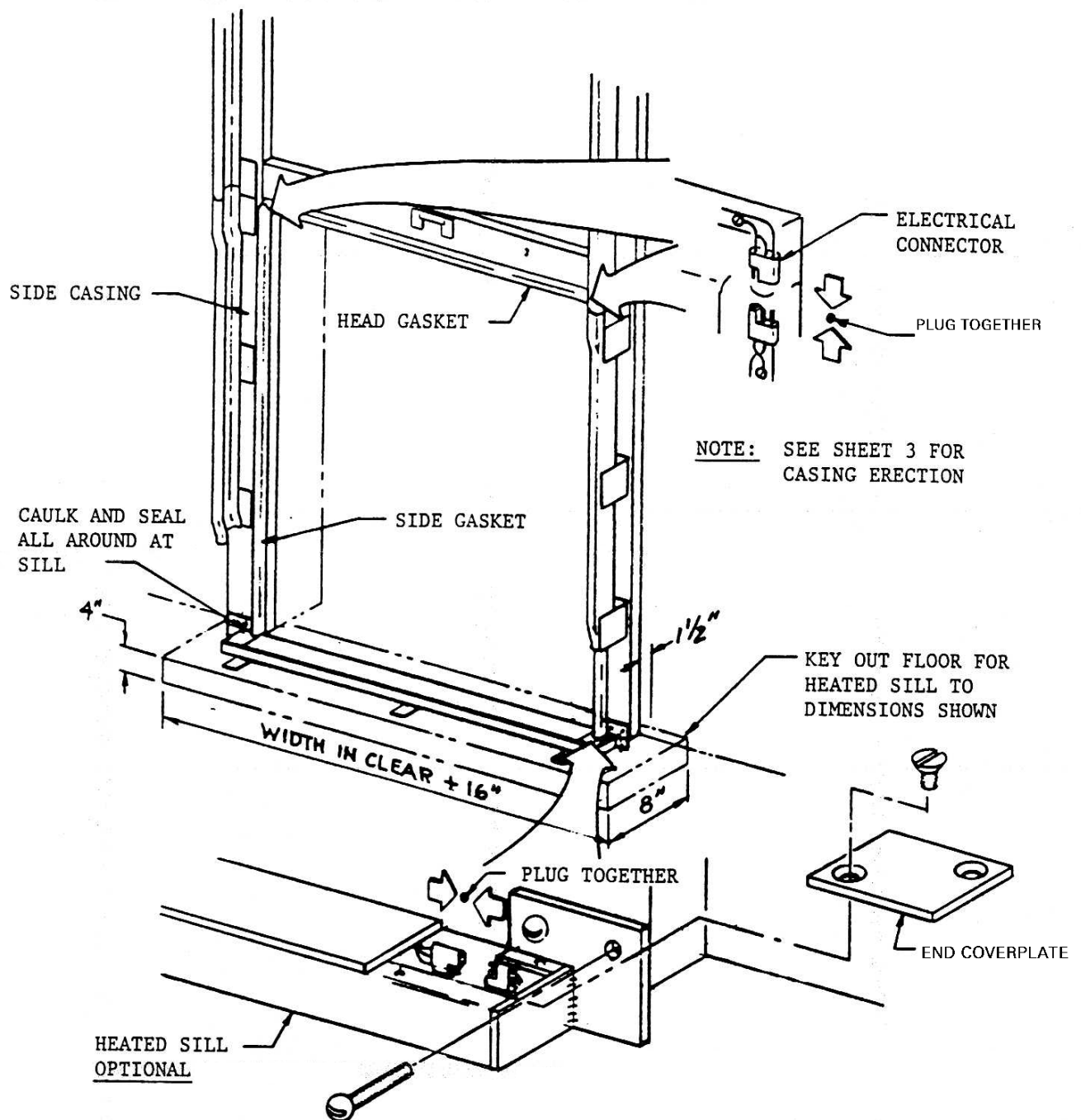
LEFT HAND COUNTERWEIGHT SHOWN  
RIGHT HAND COUNTERWEIGHT OPPOSITE

CLEARANCE DIMENSIONS

1. BUCKS MUST BE PLUMB, TRUE AND SQUARE. FLOOR THROUGH DOOR OPENING MUST BE LEVEL FULL WIDTH TO PROVIDE PROPER DOOR OPERATION AND GASKET SEAL.
2. CAULK AND VAPOR SEAL BACK, BOTTOM AND AROUND EDGES OF CASINGS.
3. BLOCK EACH SIDE CASING IN PLACE TEMPORARILY MAKING SURE THEY ARE PLUMB, TRUE AND SQUARE. INSTALL HEAD CASING AND TOP HORIZONTAL SPREADER ANGLE. USING CENTER HOLES IN TRACK SUPPORT ANGLES AS TEMPLATE DRILL THROUGH CASINGS FOR PROPER ATTACHMENT FASTENING.
4. BOLT SHEAVE BRACKET MOUNTING PLATE THROUGH WALL AT TOP OF EACH CASING AND CENTER HOLE OF TOP TRACK SUPPORT ANGLE.
5. RECHECK PLUMB, SHIM IF REQUIRED, TIGHTEN ALL FASTENINGS.



## CASING ERECTION



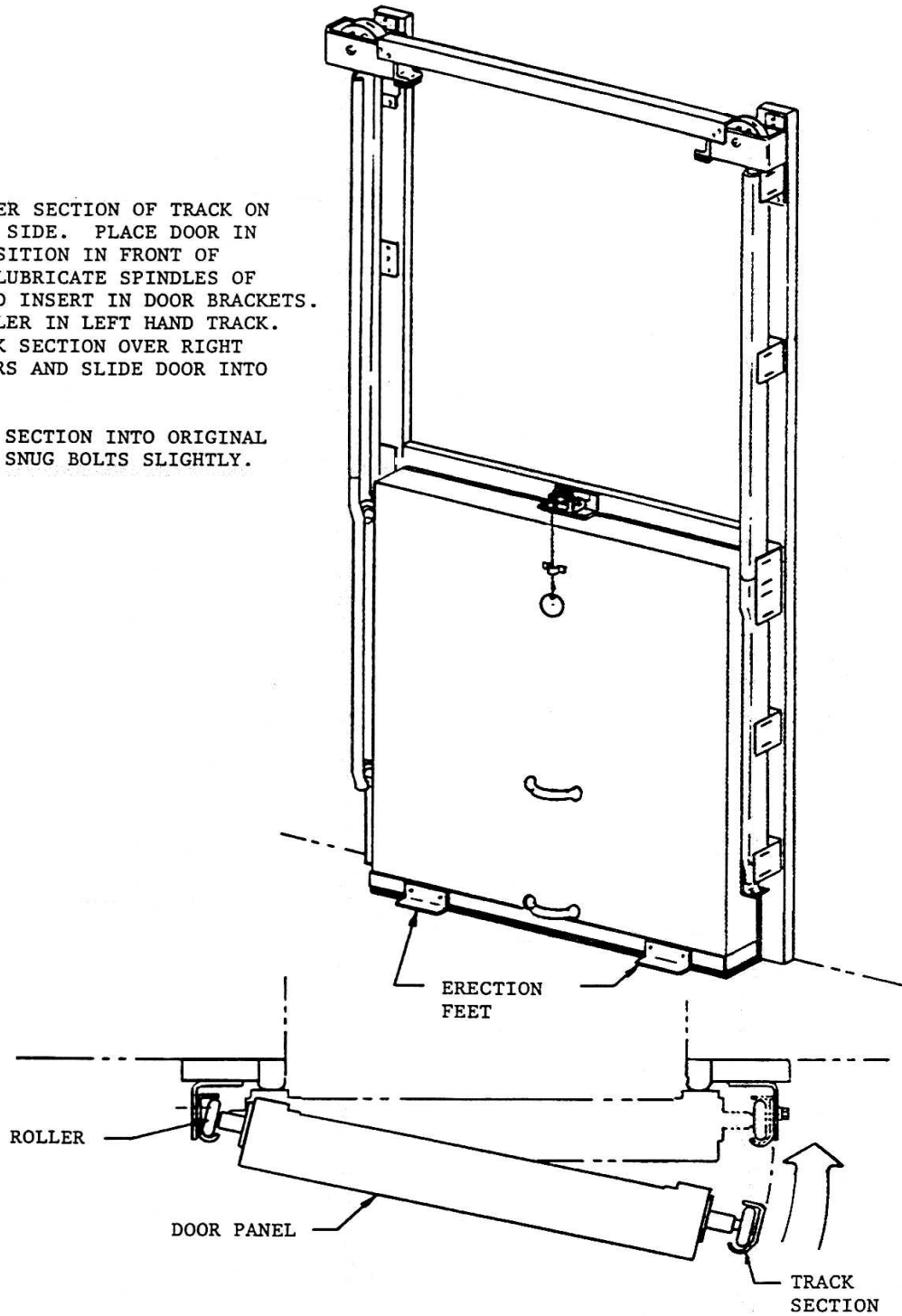
**STEPS:**

1. ATTACH HEATED SILL TO CASING WITH FASTENINGS PROVIDED. SILL ASSEMBLY MUST BE LEVEL AND TRUE FROM CASING TO CASING.
2. PLUG ELECTRICAL CONNECTOR TOGETHER AT FOUR CORNERS OF FRAME AS SHOWN.
3. INSTALL END COVERPLATES, CAULK AND SEAL TO EXCLUDE MOISTURE.
4. BRACE HEATED SILL SECURELY AND GROUT IN FINISHED CONCRETE FLOOR AROUND SILL.

**CASING ERECTION (SPECIAL FREEZER)**

STEPS:

1. REMOVE LOWER SECTION OF TRACK ON RIGHT HAND SIDE. PLACE DOOR IN UPRIGHT POSITION IN FRONT OF OPENING. LUBRICATE SPINDLES OF ROLLERS AND INSERT IN DOOR BRACKETS. ENGAGE ROLLER IN LEFT HAND TRACK. PLACE TRACK SECTION OVER RIGHT HAND ROLLERS AND SLIDE DOOR INTO POSITION.
2. BOLT TRACK SECTION INTO ORIGINAL LOCATION. SNUG BOLTS SLIGHTLY.



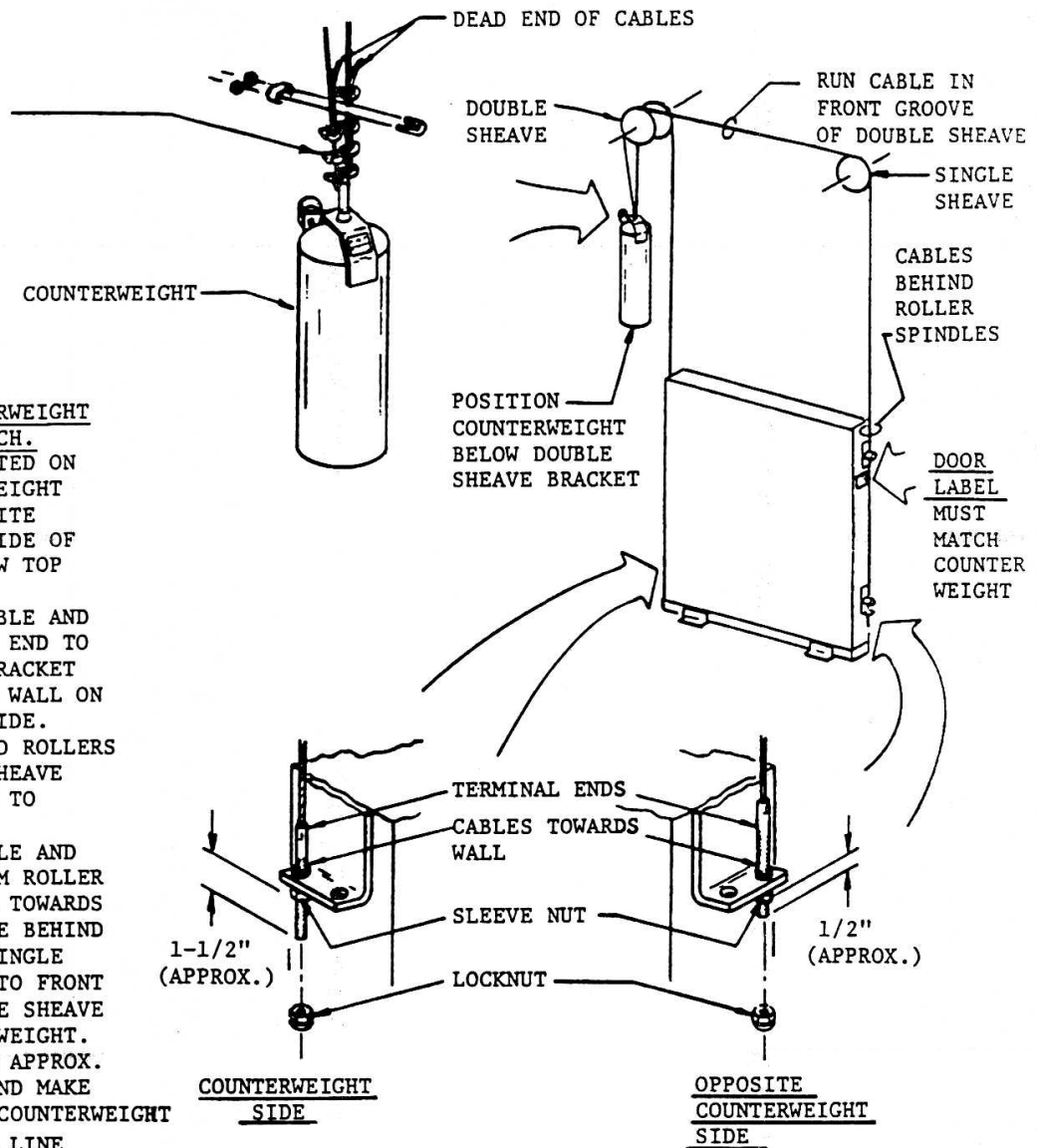
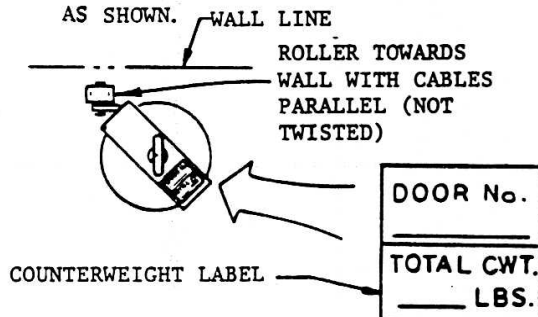
PLACING DOOR IN TRACK

**CAUTION:**

USE FOUR (4) CABLE CLAMPS PER CABLE. U-BOLT MUST BE PLACED OVER DEAD END SIDE OF CABLE AS SHOWN.

**STEPS:**

1. DOOR AND COUNTERWEIGHT LABELS MUST MATCH. LABELS ARE LOCATED ON TOP OF COUNTERWEIGHT STRAP AND OPPOSITE COUNTERWEIGHT SIDE OF DOOR PANEL BELOW TOP ROLLER BRACKET.
2. USE SHORTEST CABLE AND ATTACH TERMINAL END TO BOTTOM ROLLER BRACKET IN HOLE TOWARDS WALL ON COUNTERWEIGHT SIDE. RUN CABLE BEHIND ROLLERS AND OVER REAR SHEAVE GROOVE AND DOWN TO COUNTERWEIGHT.
3. USE LONGEST CABLE AND ATTACH TO BOTTOM ROLLER BRACKET IN HOLE TOWARDS WALL. RUN CABLE BEHIND ROLLERS, OVER SINGLE SHEAVE, ACROSS TO FRONT GROOVE OF DOUBLE SHEAVE DOWN TO COUNTERWEIGHT.
4. PULL CABLES FOR APPROX. EQUAL TENSION AND MAKE CONNECTIONS AT COUNTERWEIGHT AS SHOWN.

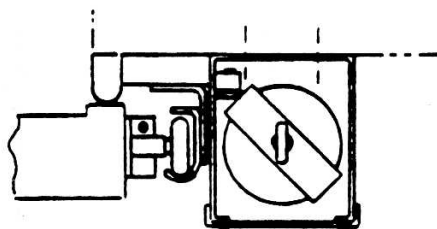
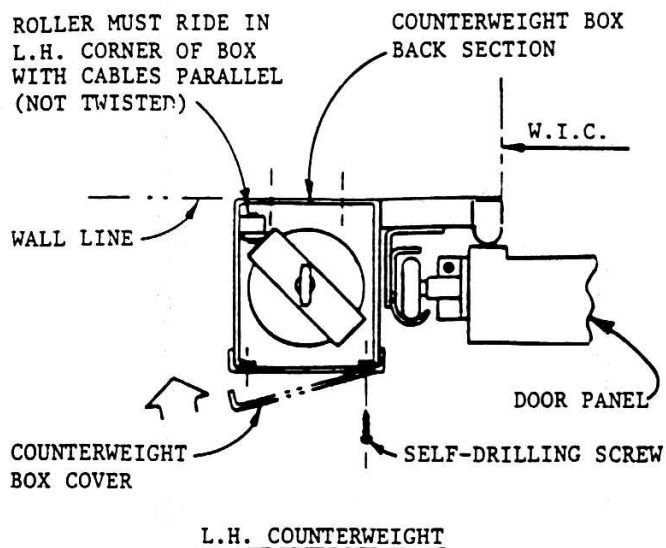


**STOP**

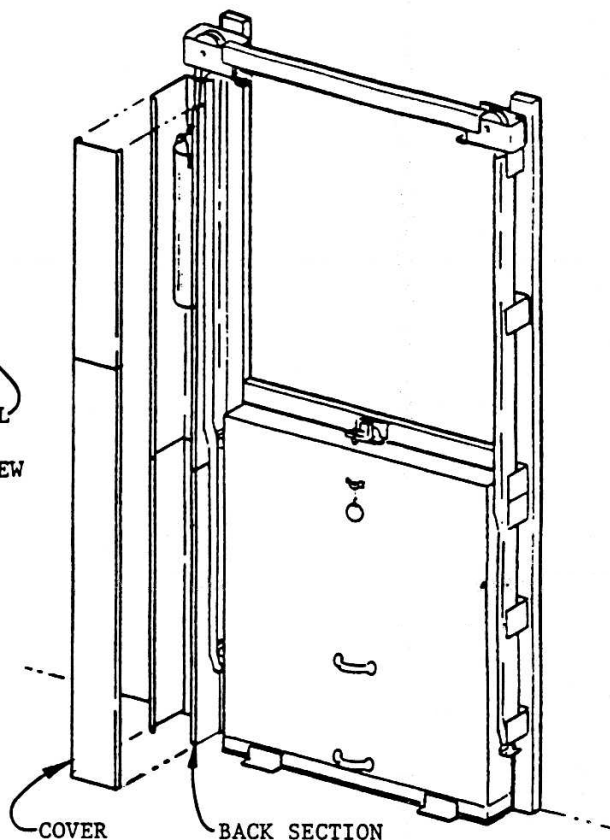
DOOR NUMBER AND TOTAL WEIGHT MUST MATCH BETWEEN DOOR AND COUNTERWEIGHT. DO NOT INSTALL IF NUMBERS OR WEIGHTS DO NOT AGREE. CALL JAMISON DOOR COMPANY FOR INSTRUCTIONS.

RIGGING DETAILS FOR L. H. COUNTERWEIGHT – R. H. COUNTERWEIGHT OPPOSITE



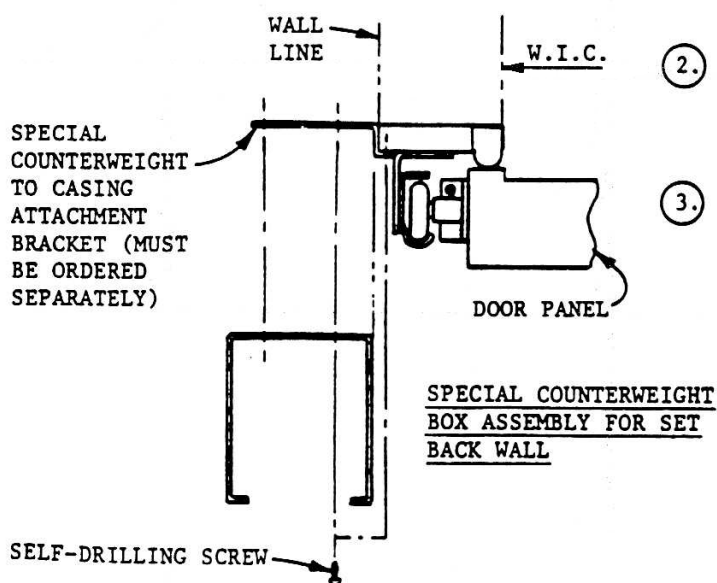


R.H. COUNTERWEIGHT



STEPS:

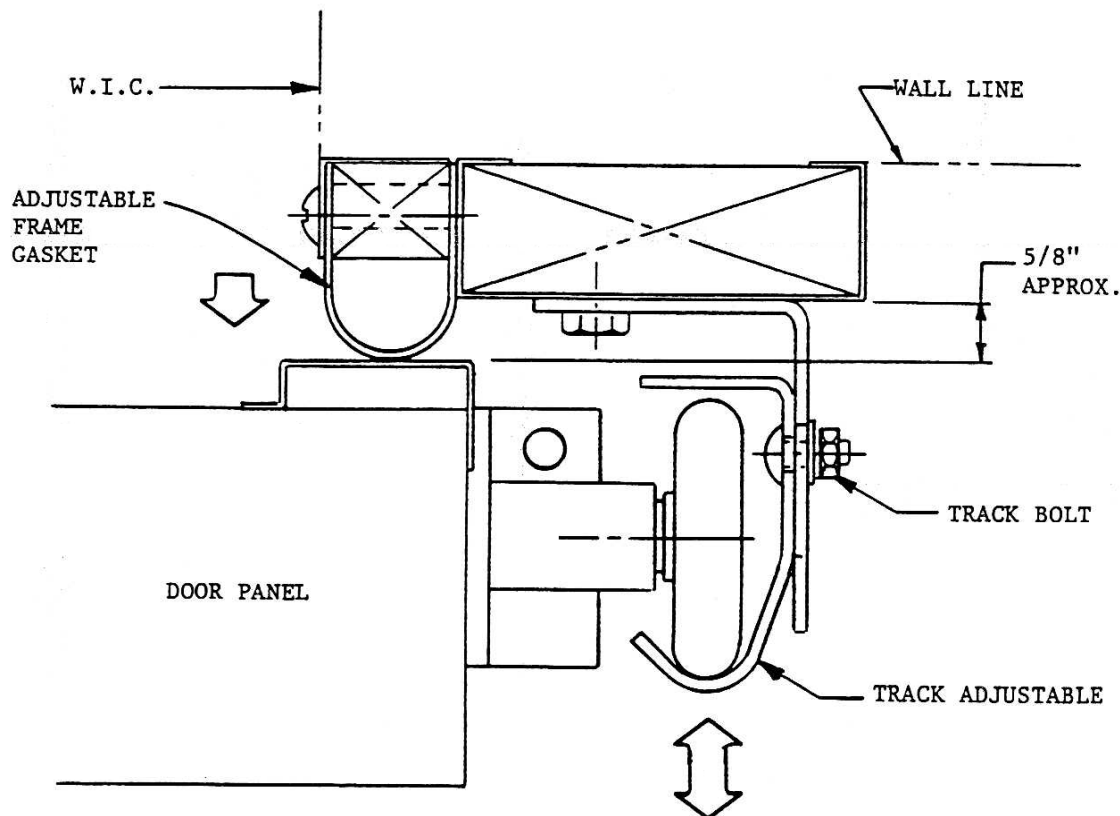
- ①. COUNTERWEIGHT ROLLER MUST RIDE IN L.H. CORNER OF COUNTERWEIGHT BOX, L.H. OR R.H. COUNTERWEIGHT DOORS. CABLES MUST NOT TWIST.
- ②. ATTACH COUNTERWEIGHT BOX BACK SECTIONS TO WALL OR SPECIAL CASING BRACKET USING #8 X 1/2" LG. SELF-DRILLING SCREWS. USE SHORT SECTION AT BOTTOM.
- ③. ATTACH BOX COVER LONG SECTION AT BOTTOM WITH #8 X 1/2" LG. SELF-DRILLING SCREWS.



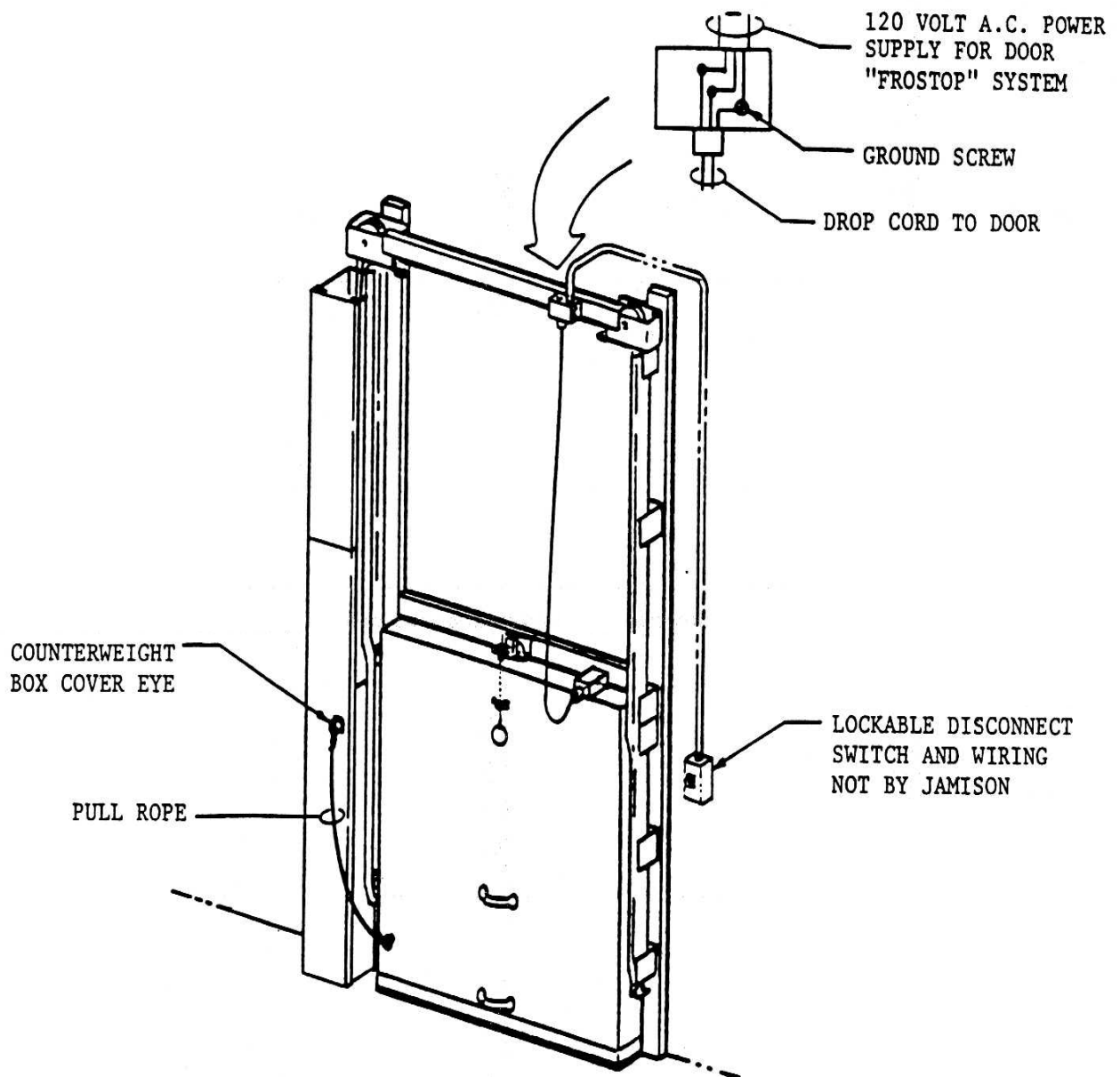
COUNTERWEIGHT BOX ASSEMBLY

STEPS:

1. REMOVE ERECTION FEET FROM BOTTOM OF DOOR, CAULK AND REPLACE SCREWS IN GASKET RETAINER.
2. OPERATE DOOR MANUALLY TO CHECK FOR ANY BINDING OR ALIGNMENT PROBLEMS.
3. ADJUST DOOR FOR PROPER GASKET SEAL. LOOSEN TRACK FASTENINGS AND MOVE TRACK IN OR OUT AS REQUIRED TO ACHIEVE A GOOD GASKET SEAL. TIGHTEN ALL TRACK FASTENINGS. ADJUST FRAME GASKET IF REQUIRED.
4. ADJUST CABLE TERMINAL ENDS IF NECESSARY TO ACHIEVE A GASKET SEAL ACROSS SILL. SEE PAGE 6.



DOOR AND GASKET ADJUSTMENTS



STEPS:

1. TIE PULL ROPE TO COUNTERWEIGHT BOX STAPLE EYE AND DOOR PANEL EYE AS SHOWN.
2. FREEZER DOOR ONLY CONNECT 120 VOLT AC POWER SOURCE THROUGH LOCKABLE DISCONNECT SWITCH LOCATED AT AN ACCESSIBLE LOCATION.
3. LUBRICATE ALL MOVING PARTS OF HARDWARE PERIODICALLY (AS FREQUENTLY AS REQUIRED FOR FRICTION-FREE OPERATION).

PULL ROPE AND "FROSTOP" HOOK-UP