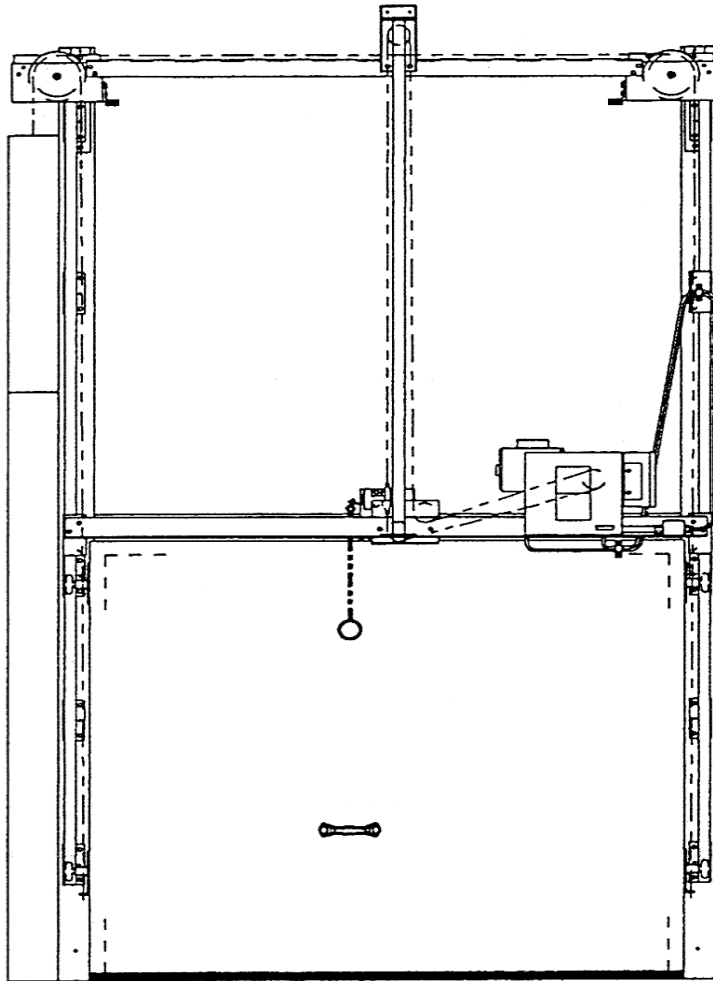


Installation Instructions for Mark IV™ Vertical Sliding Power Door

**“AFTER INSTALLING DOOR FORWARD TO MAINTENANCE DEPARTMENT OR
OWNER”**



JAMISON

JAMISON DOOR COMPANY
P.O. BOX 70
HAGERSTOWN, MARYLAND 21741
USA
(1-800-532-3667)

INTERNET: <http://www.jamison-door.com>

E-MAIL: engineering@jamison-door.com

Mark IV Vertical Sliding Power Door Miscellaneous Parts Application

Application	Item
Attaching frame to panel wall	<ul style="list-style-type: none"> ○ Bags of carriage bolts w/ washers and nuts, or ○ Lag screws, or ○ 3/8-16UN Threaded rod
Attaching spreader angle to sheave brackets And lower spreader angle to mounting brackets	<ul style="list-style-type: none"> ○ 3/8-16UN X 1-1/4 long hex head machine bolt ○ 3/8-16UN locknut
Attaching counterweight box to wall and cover To counterweight box	<ul style="list-style-type: none"> ○ #8 18X1/2 SST self drilling Phillips head screws
Spare track fasteners	<ul style="list-style-type: none"> ○ 5/16-18UN X ¾ hi-tensile oval head carriage bolt ○ 11/16 OD X 11/32 IDX 16 GA flat steel washer ○ 5/16 dia. Shakeproof lockwasher ○ 5/16-18UN heavy hex nut
For use in non-freezer applications	<ul style="list-style-type: none"> ○ Pull cord switch w/o heat
For use in freezer applications	<ul style="list-style-type: none"> ○ Pull cord switch w/heat
For use with pull cord switches	<ul style="list-style-type: none"> ○ ¼-20UNX 1-1/2 round head machine screws ○ ¼-20UN hex nuts
Attaching gasket retainer to jambs (if jambs are ordered only)	<ul style="list-style-type: none"> ○ #14X1 truss head wood screws

I. INSTALLATION INSTRUCTIONS	PAGE NO.
<u>GENERAL INFORMATION</u>	1
<u>MINIMUM CLEARANCES REQUIRED</u>	2
CASING ERECTION	3
CASING ERECTION (SPECIAL FREEZER)	4
PLACING DOOR INTO TRACK	5
RIGGING DETAILS FOR L. H. COUNTERWEIGHT	6
POWER DRIVE ASSEMBLY	7
COUNTERWEIGHT BOX ASSEMBLY	8
TOP AND BOTTOM IDLER ASSEMBLY ATTACHMENTS	9
CONNECTING DRIVE CHAIN	10
DOOR AND GASKET ADJUSTMENTS	11
WIRING CONNECTIONS TO DOOR PANEL	12
PULL CORD SWITCH CONNECTIONS	13
CONNECT MAIN POWER SUPPLY	14
TEST OPERATION UNDER POWER	15
TRAVEL LIMIT SWITCH ADJUSTMENT	16
MASTER LABEL PLATE	17
II. <u>OPERATING INSTRUCTIONS</u>	18
III. <u>MAINTENANCE REQUIREMENTS AND LUBRICATION CHART</u>	
SEALING GASKET ADJUSTMENT	19
TRACK ADJUSTMENT	19
DOOR DRIVE CHAIN ADJUSTMENTS	20
TRAVEL LIMIT SWITCH CHAIN ADJUSTMENT	20
LUBRICATION CHART	21
IV. <u>ELECTRICAL TROUBLE SHOOTING GUIDE</u>	22

GENERAL INFORMATION:

A. Contents of crates and Carton

1. Frame component parts and assemblies shipped knocked-down.

NOTE: If frame has jambs, casings and jambs shipped in separate crates.

2. One crate containing door leaf with all components, parts and assemblies attached.
3. One carton containing:
 - a. Packing List
 - b. Installation Instructions
 - c. Operating Instructions

B. Inspect for Damage and Shortages Immediately

1. Note on all copies of delivery receipt any apparent damages and shortages.
2. Open all shipping containers and inspect for concealed damage and shortages. Carefully repack to prevent further damage and pilferage.
3. Report within 15 days in writing to the transportation company and a copy to us, any concealed damage and /or shortages. After 15 days, the law permits the transportation company to reject all claims.

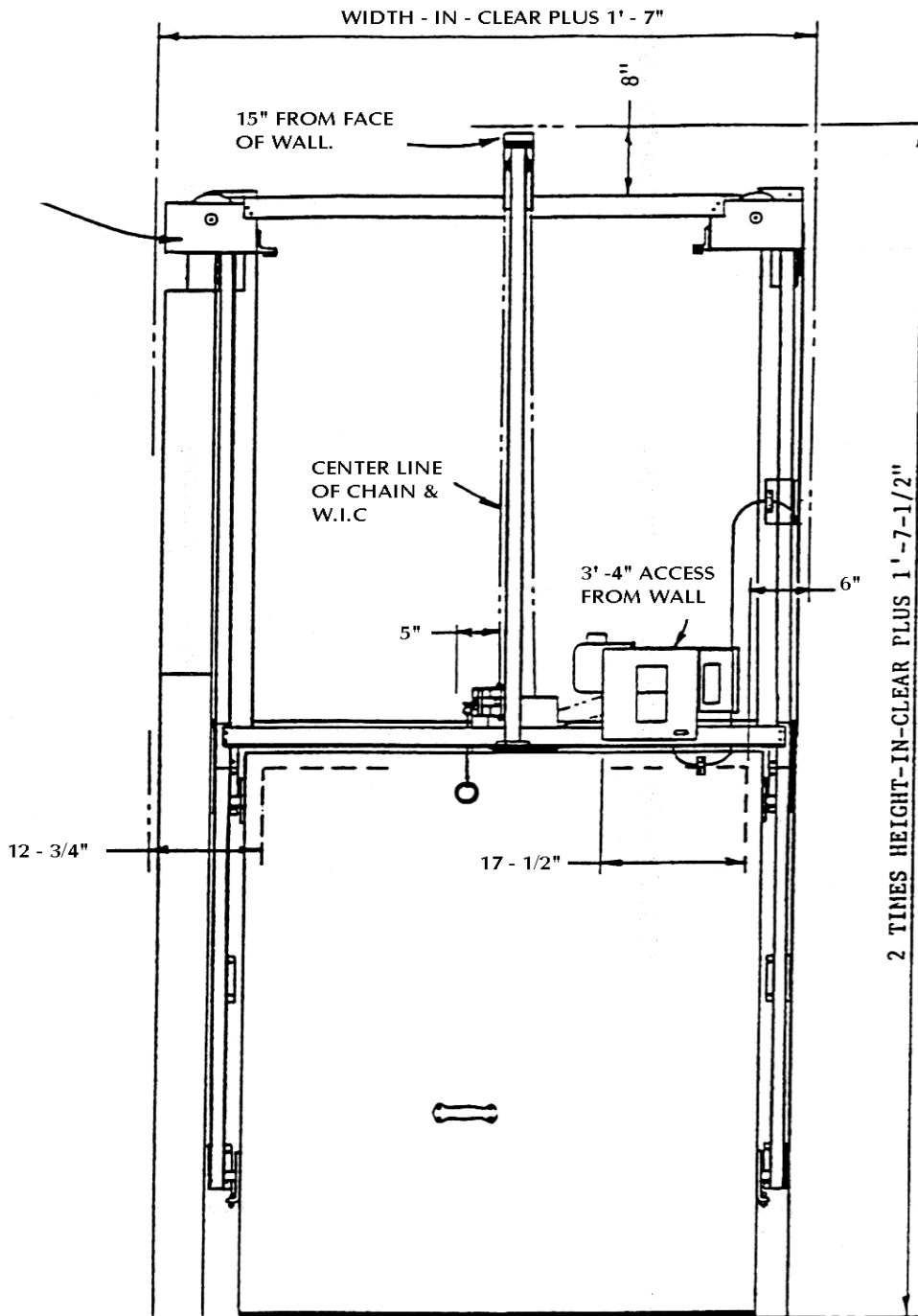
C. Handle All Parts Carefully

1. Certain parts such as gaskets, wiring, reversing edges, etc. are vulnerable.

D. READ ALL INSTRUCTIONS BEFORE PROCEEDING WITH ERECTION

E. Plan Ahead

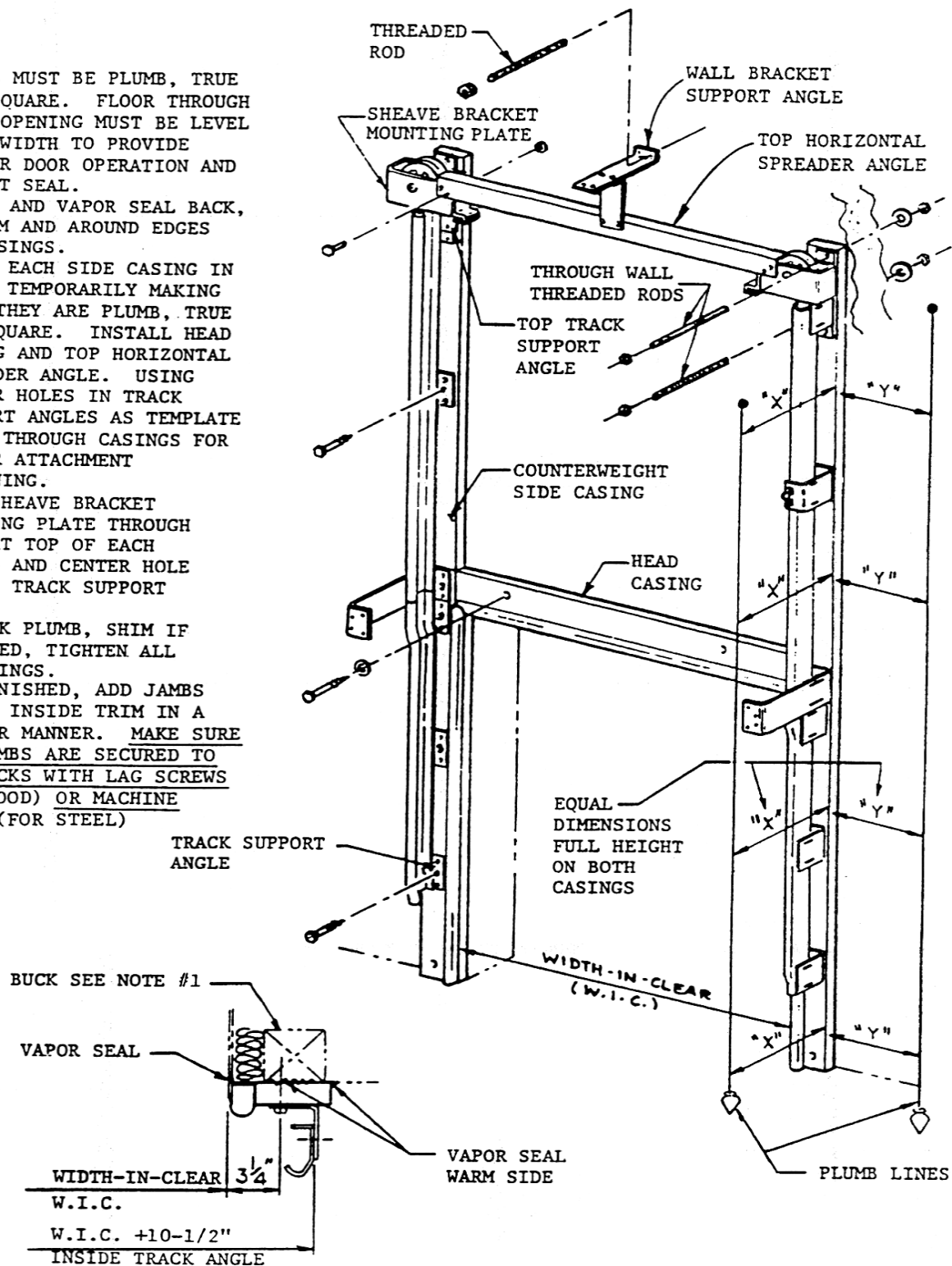
1. Choose installers who are millwrights or have equal qualifications.
2. Have all tools and materials necessary for installation readily available.



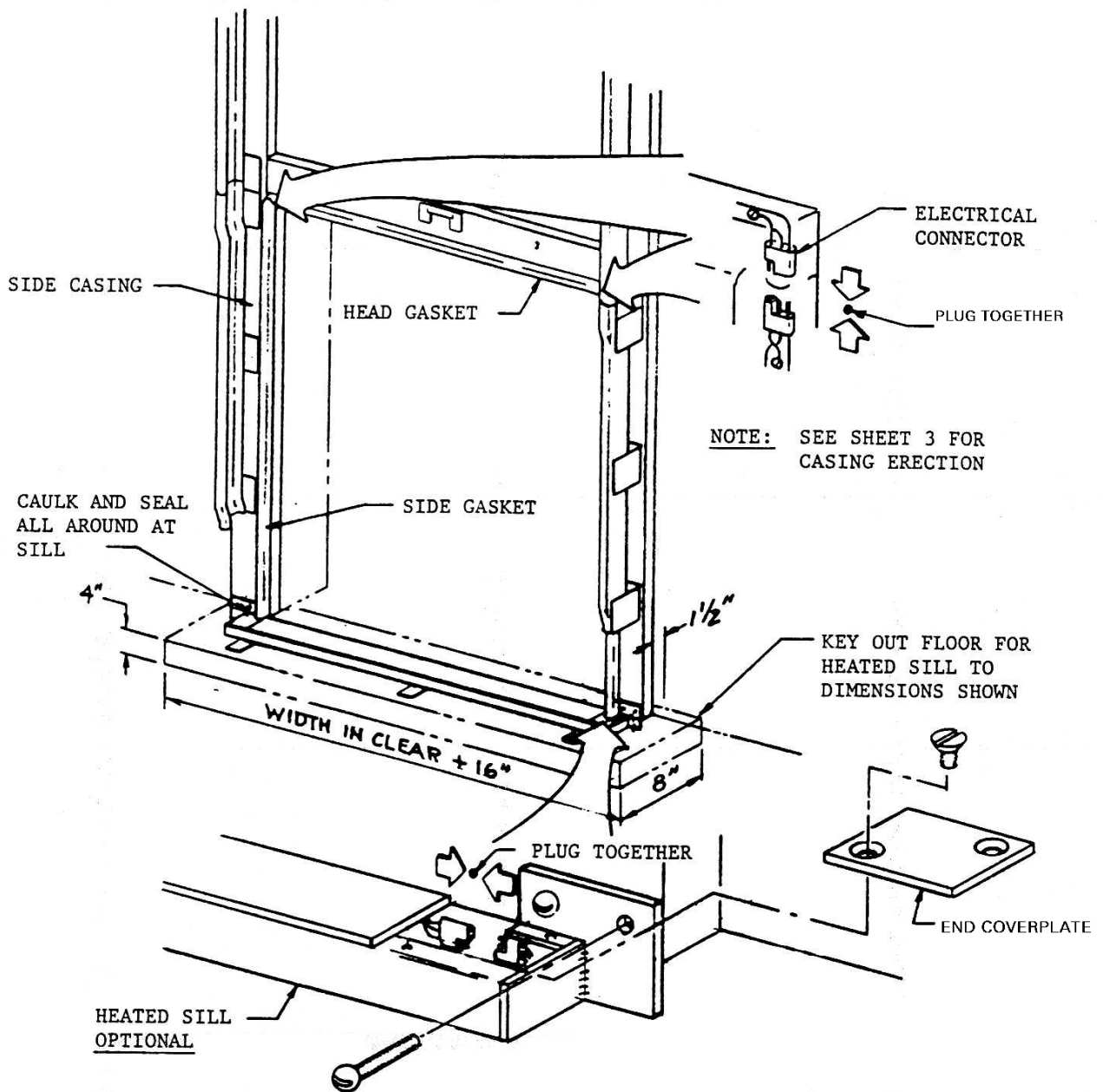
MARK IV POWER OPERATED VERTICAL SLIDING DOOR

MINIMUM CLEARANCES REQUIRED

1. BUCKS MUST BE PLUMB, TRUE AND SQUARE. FLOOR THROUGH DOOR OPENING MUST BE LEVEL FULL WIDTH TO PROVIDE PROPER DOOR OPERATION AND GASKET SEAL.
2. CAULK AND VAPOR SEAL BACK, BOTTOM AND AROUND EDGES OF CASINGS.
3. BLOCK EACH SIDE CASING IN PLACE TEMPORARILY MAKING SURE THEY ARE PLUMB, TRUE AND SQUARE. INSTALL HEAD CASING AND TOP HORIZONTAL SPREADER ANGLE. USING CENTER HOLES IN TRACK SUPPORT ANGLES AS TEMPLATE DRILL THROUGH CASINGS FOR PROPER ATTACHMENT FASTENING.
4. BOLT SHEAVE BRACKET MOUNTING PLATE THROUGH WALL AT TOP OF EACH CASING AND CENTER HOLE OF TOP TRACK SUPPORT ANGLE.
5. RECHECK PLUMB, SHIM IF REQUIRED, TIGHTEN ALL FASTENINGS.
6. IF FURNISHED, ADD JAMBS AND/OR INSIDE TRIM IN A SIMILAR MANNER. MAKE SURE THE JAMBS ARE SECURED TO THE BUCKS WITH LAG SCREWS (FOR WOOD) OR MACHINE BOLTS (FOR STEEL)



CASING ERECTION



STEPS:

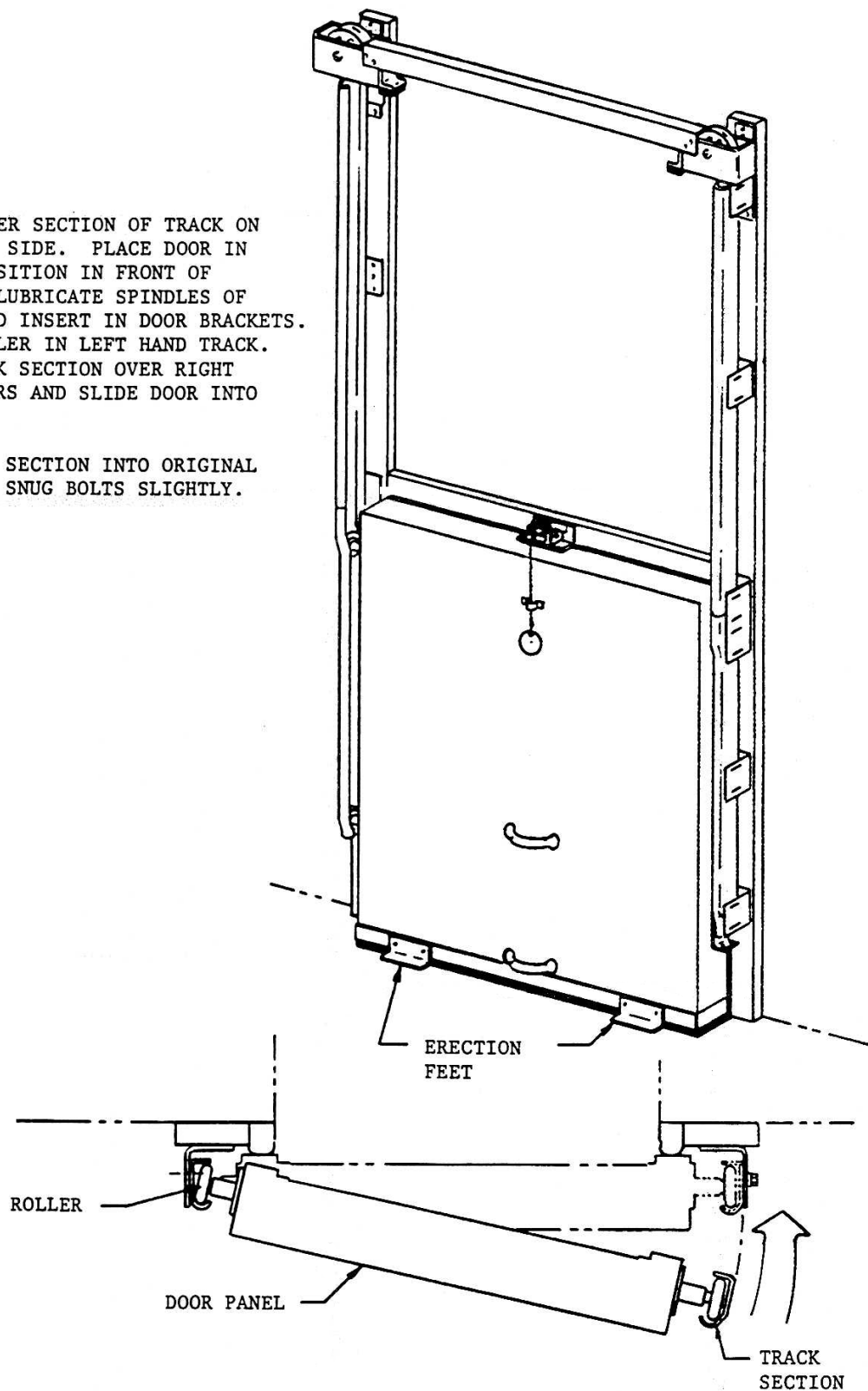
1. ATTACH HEATED SILL TO CASING WITH FASTENINGS PROVIDED. SILL ASSEMBLY MUST BE LEVEL AND TRUE FROM CASING TO CASING.
2. PLUG ELECTRICAL CONNECTOR TOGETHER AT FOUR CORNERS OF FRAME AS SHOWN.
3. INSTALL END COVERPLATES, CAULK AND SEAL TO EXCLUDE MOISTURE.
4. BRACE HEATED SILL SECURELY AND GROUT IN FINISHED CONCRETE FLOOR AROUND SILL.

CASING ERECTION (SPECIAL FREEZER)

PLACING THE DOOR IN THE TRACK

STEPS:

1. REMOVE LOWER SECTION OF TRACK ON RIGHT HAND SIDE. PLACE DOOR IN UPRIGHT POSITION IN FRONT OF OPENING. LUBRICATE SPINDLES OF ROLLERS AND INSERT IN DOOR BRACKETS. ENGAGE ROLLER IN LEFT HAND TRACK. PLACE TRACK SECTION OVER RIGHT HAND ROLLERS AND SLIDE DOOR INTO POSITION.
2. BOLT TRACK SECTION INTO ORIGINAL LOCATION. SNUG BOLTS SLIGHTLY.

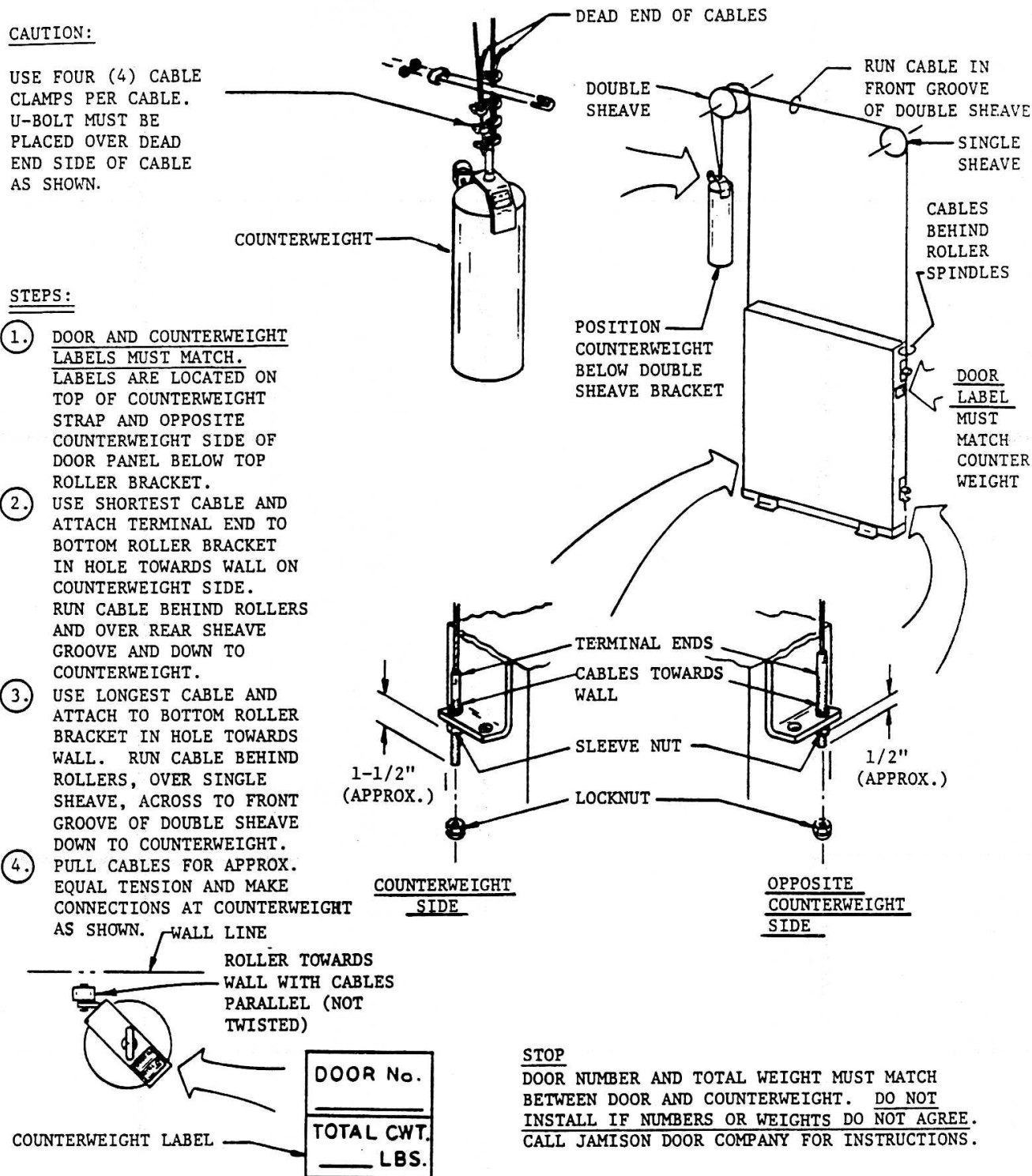


CAUTION:

USE FOUR (4) CABLE CLAMPS PER CABLE. U-BOLT MUST BE PLACED OVER DEAD END SIDE OF CABLE AS SHOWN.

STEPS:

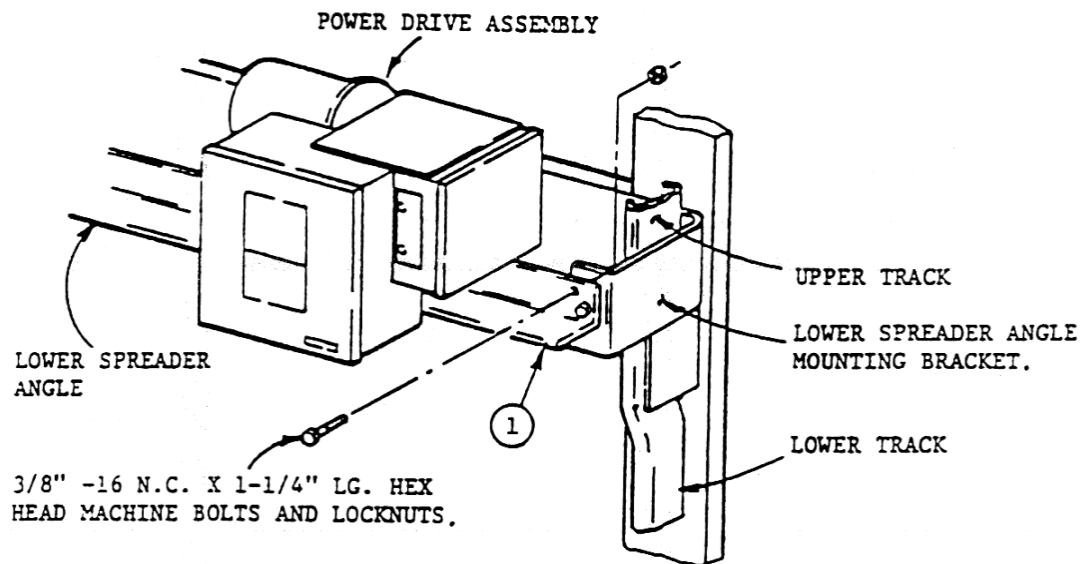
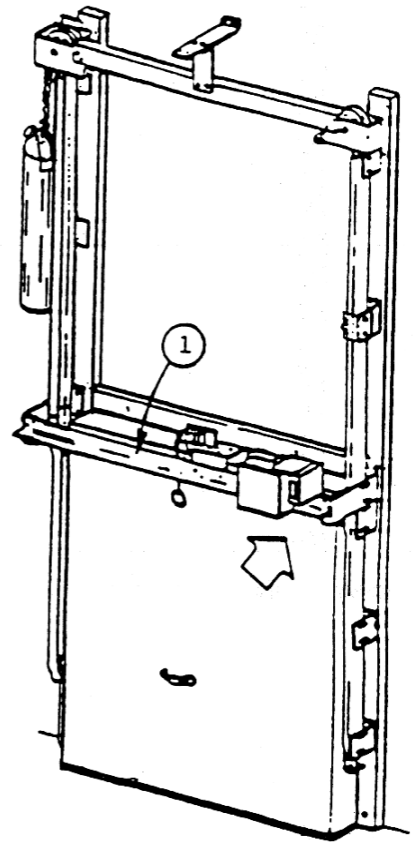
1. DOOR AND COUNTERWEIGHT LABELS MUST MATCH. LABELS ARE LOCATED ON TOP OF COUNTERWEIGHT STRAP AND OPPOSITE COUNTERWEIGHT SIDE OF DOOR PANEL BELOW TOP ROLLER BRACKET.
2. USE SHORTEST CABLE AND ATTACH TERMINAL END TO BOTTOM ROLLER BRACKET IN HOLE TOWARDS WALL ON COUNTERWEIGHT SIDE. RUN CABLE BEHIND ROLLERS AND OVER REAR SHEAVE GROOVE AND DOWN TO COUNTERWEIGHT.
3. USE LONGEST CABLE AND ATTACH TO BOTTOM ROLLER BRACKET IN HOLE TOWARDS WALL. RUN CABLE BEHIND ROLLERS, OVER SINGLE SHEAVE, ACROSS TO FRONT GROOVE OF DOUBLE SHEAVE DOWN TO COUNTERWEIGHT.
4. PULL CABLES FOR APPROX. EQUAL TENSION AND MAKE CONNECTIONS AT COUNTERWEIGHT AS SHOWN.



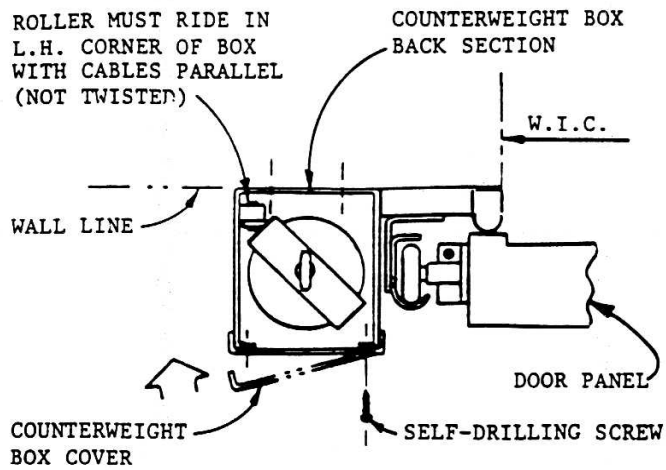
RIGGING DETAILS FOR L. H. COUNTERWEIGHT – R.H. COUNTERWEIGHT OPPOSITE

STEPS:

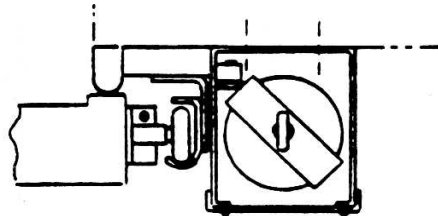
1. INSTALL HORIZONTAL SPREADER ANGLE TO MOUNTING BRACKET ON EACH SIDE WITH FASTENINGS PROVIDED AS SHOWN.



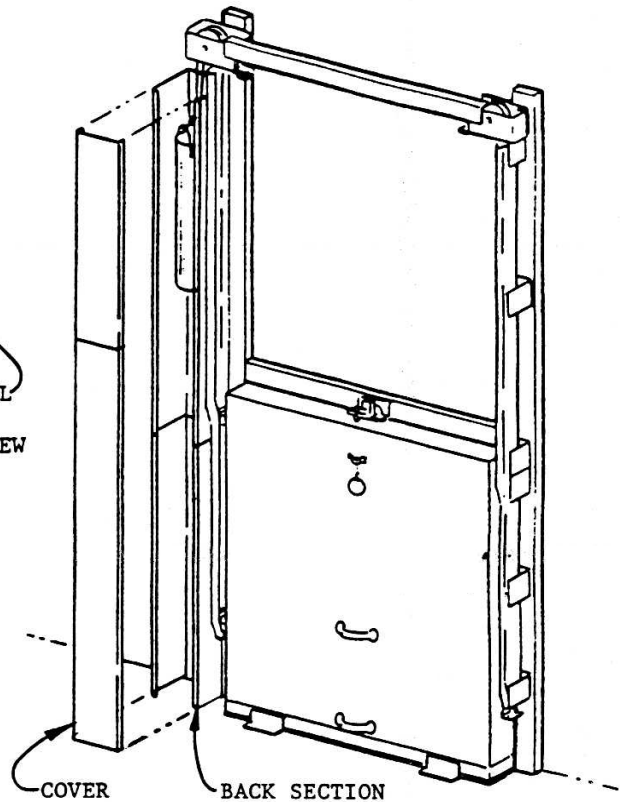
POWER DRIVE ASSEMBLY



L.H. COUNTERWEIGHT

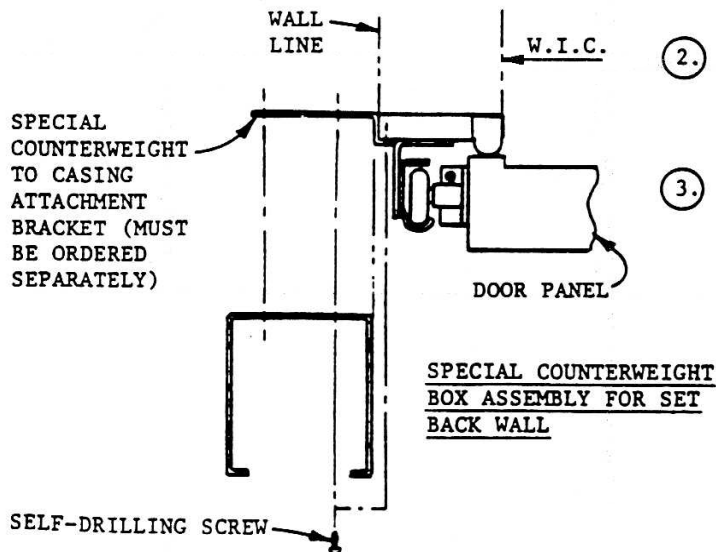


R.H. COUNTERWEIGHT



STEPS:

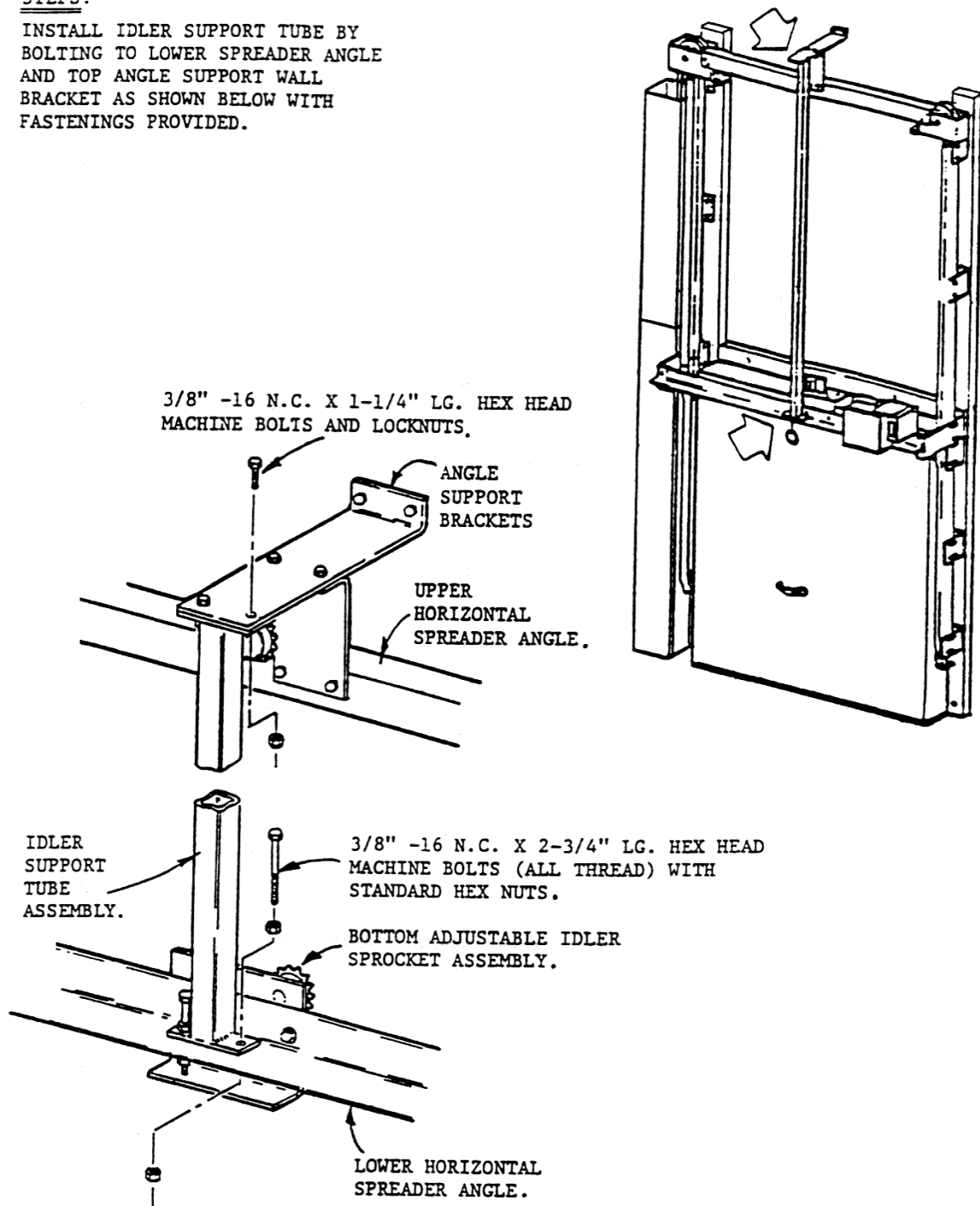
- ①. COUNTERWEIGHT ROLLER MUST RIDE IN L.H. CORNER OF COUNTERWEIGHT BOX, L.H. OR R.H. COUNTERWEIGHT DOORS. CABLES MUST NOT TWIST.
- ②. ATTACH COUNTERWEIGHT BOX BACK SECTIONS TO WALL OR SPECIAL CASING BRACKET USING #8 X 1/2" LG. SELF-DRILLING SCREWS. USE SHORT SECTION AT BOTTOM.
- ③. ATTACH BOX COVER LONG SECTION AT BOTTOM WITH #8 X 1/2" LG. SELF-DRILLING SCREWS.



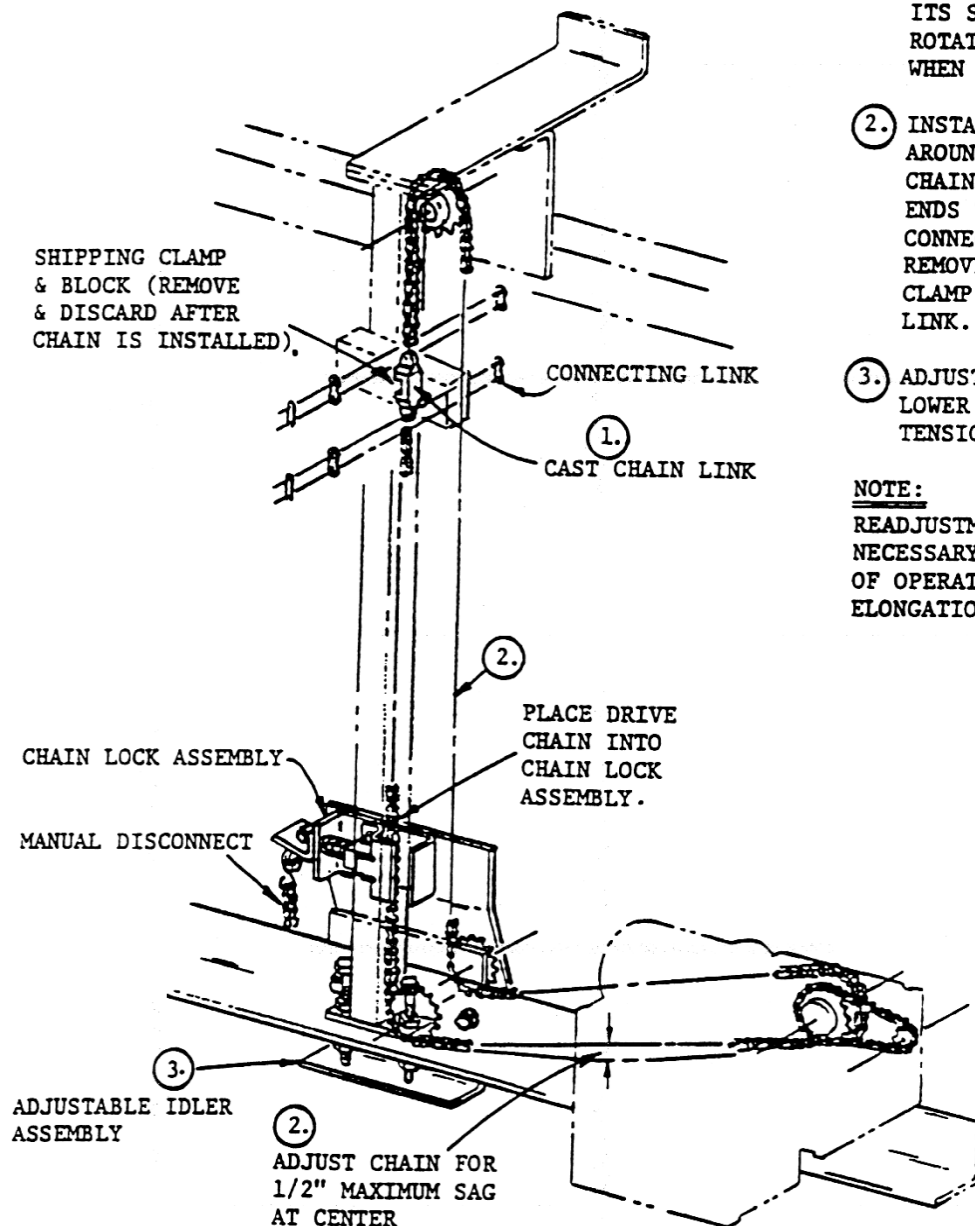
COUNTERWEIGHT BOX ASSEMBLY

STEPS:

INSTALL IDLER SUPPORT TUBE BY
BOLTING TO LOWER SPREADER ANGLE
AND TOP ANGLE SUPPORT WALL
BRACKET AS SHOWN BELOW WITH
FASTENINGS PROVIDED.



TOP AND BOTTOM IDLER ASSEMBLY ATTACHMENTS



STEPS:

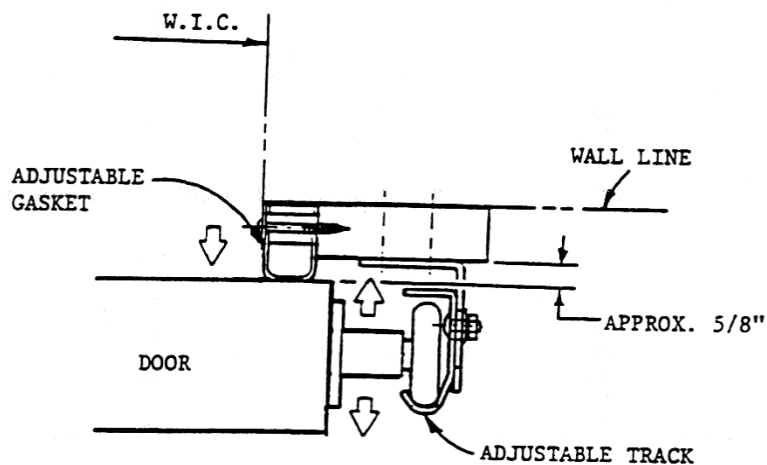
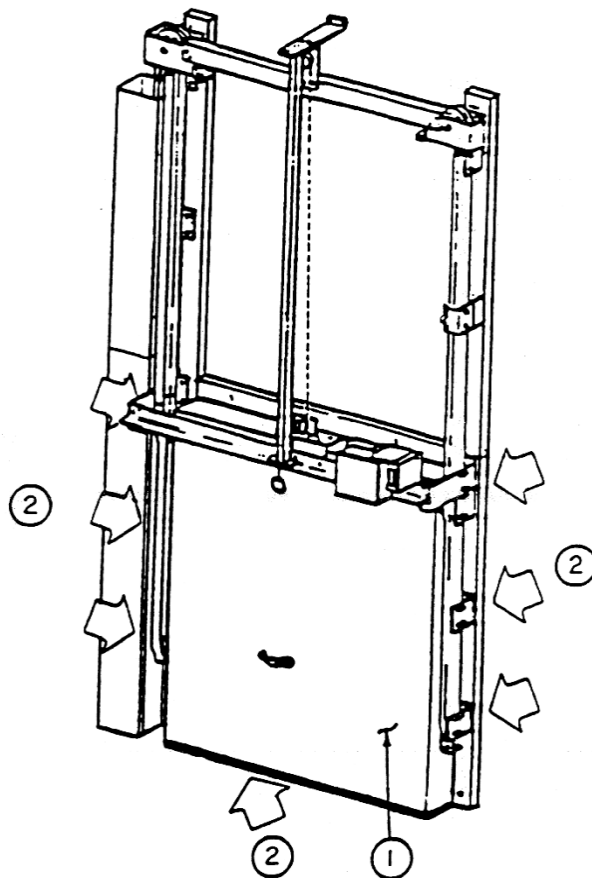
1. TO KEEP TRAVEL LIMIT SWITCHES AND POWER UNIT IN PROPER TIMING, DO NOT REMOVE CAST LINK FROM ITS SHIPPING CLAMP OR ROTATE DRIVE SPROCKET WHEN INSTALLING CHAIN.
2. INSTALL ROLLER CHAIN AROUND SPROCKETS, THROUGH CHAIN LOCK AND CONNECT ENDS TO CAST LINK WITH CONNECTING LINKS AS SHOWN. REMOVE AND DISCARD SHIPPING CLAMP AND BLOCK FROM CAST LINK.
3. ADJUST IDLER SPROCKETS ON LOWER SPREADER ANGLE TO TENSION CHAIN.

NOTE:

READJUSTMENT OF CHAIN MAY BE NECESSARY AFTER SEVERAL DAYS OF OPERATION TO REMOVE INITIAL ELONGATION OF CHAIN.

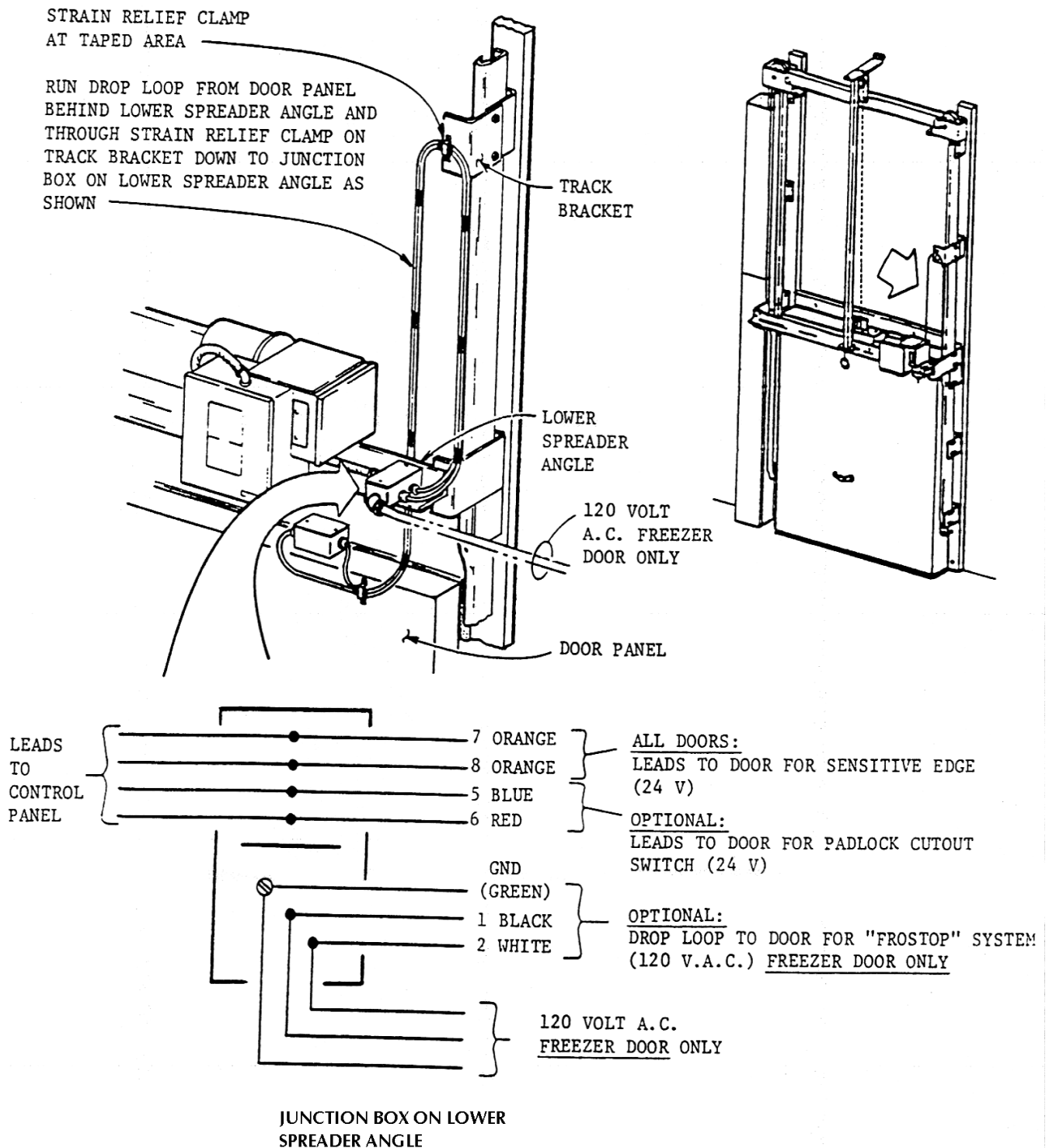
CONNECTING DRIVE CHAIN

- ① OPERATE DOOR MANUALLY TO CHECK FOR ANY BINDING OR ALIGNMENT PROBLEMS.
- ② ADJUST DOOR FOR PROPER GASKET SEAL. LOOSEN TRACK FASTENINGS AND MOVE TRACK IN OR OUT AS REQUIRED TO ACHIEVE A GOOD GASKET SEAL. SEE DETAIL "A" BELOW. TIGHTEN ALL TRACK FASTENINGS. DO NOT OVER COMPRESS GASKET. ADJUST FRAME GASKETS OR SLEEVE NUTS ON CABLE TERMINAL ENDS IF NECESSARY TO ACHIEVE A GASKET SEAL ACROSS SILL, SEE PAGE 6.

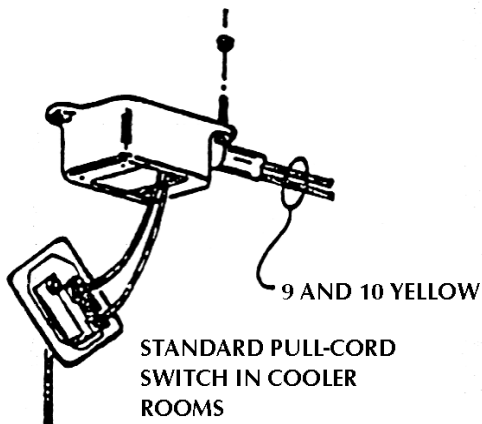
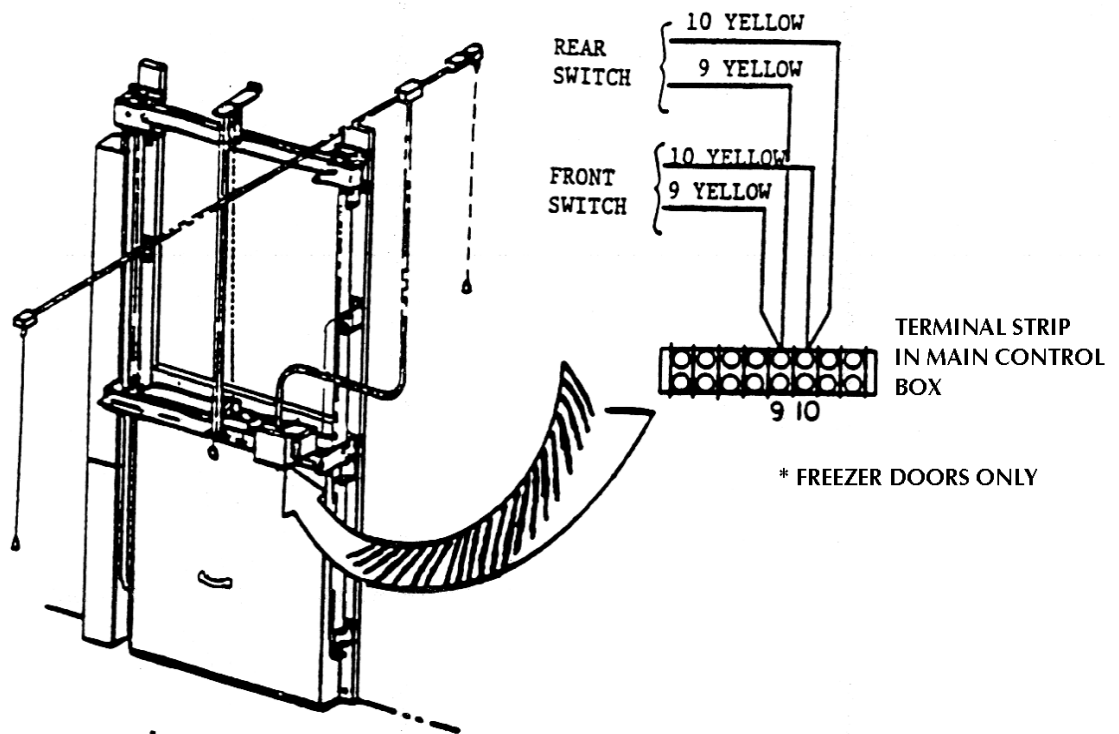


Detail "A"

DOOR AND GASKET ADJUSTMENTS



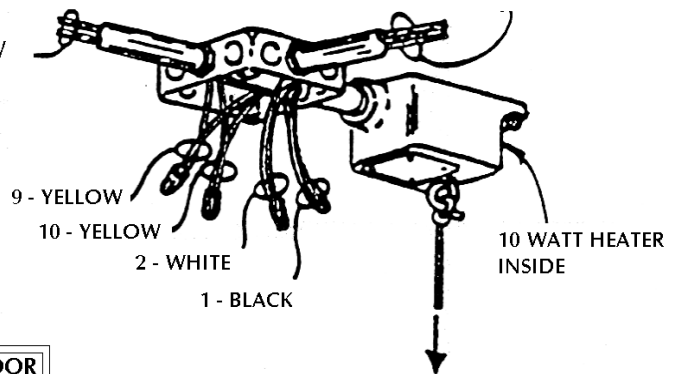
WIRING CONNECTION TO DOOR PANEL



PULL CORD SWITCHES AND ATTACHMENTS ARE PACKED FOR SHIPMENT IN SEPARATE CARTON, SEE PACKING LIST

WARNING: MAIN ELECTRICAL SERVICE TO DOOR MUST BE OFF WHILE MAKING FIELD WIRING CONNECTIONS.

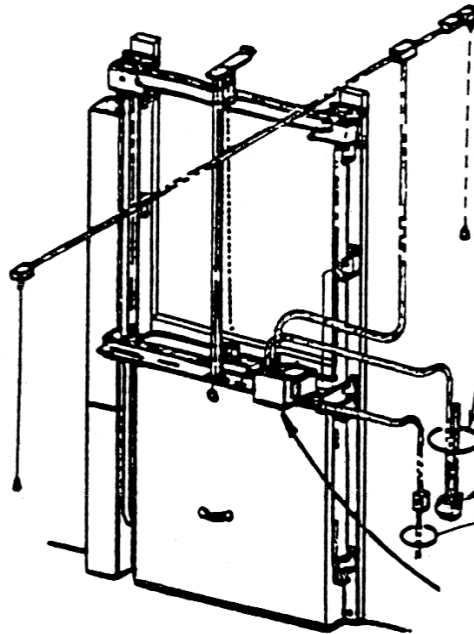
* 120 V.A.C. SUPPLY TO HEATER (BY OTHERS)



* HEATED PULL-CORD SWITCH IN FREEZER ROOM

PULL-CORD SWITCH CONNECTION WIRING AND CONDUIT NOT BY JAMISON - SEE WIRING DIAGRAM

PULL CORD SWITCH CONNECTIONS



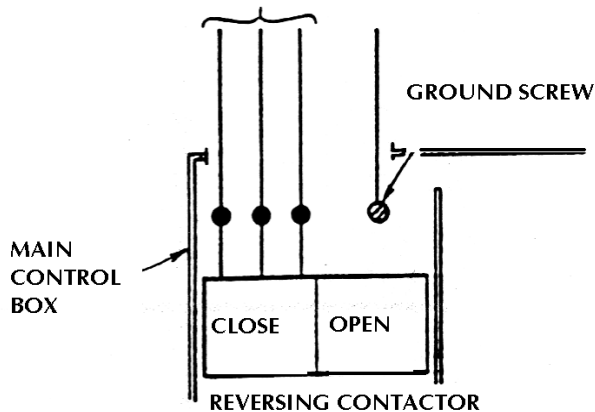
INSTALL DISCONNECTS AND WIRE DOOR

POWER SUPPL MINIMUM #12 A.W.G. IN METAL CONDUIT (WIRE AND WIRING NOT BY JAMISON).

FUSE OR CURCUIT BREAKER DISCONNECT SWITCH (NOT BY JAMISON) 3 POLE FOR 3 PHASE, 1 POLE FOR 1 PHASE SYSTEM.

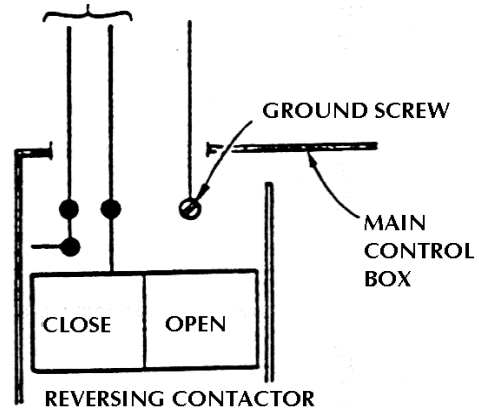
120 V.A.C. SUPPLY TO "FROSTOP" THRU KEY-SWITCH (NOT BY JAMISON). FREEZER DOOR ONLY

208/240/480 V.A.C., 3-PHASE POWER SUPPLY THRU DISCONNECT SWITCH



MAIN POWER CONNECTION
208/240/480 V.A.C. 3-PHASE SYSTEM

120 V.A.C., 1 PHASE POWER SUPPLY THRU DISCONNECT SWITCH



MAIN POWER CONNECTION
120 V.A.C., 1 PHASE SYSTEM

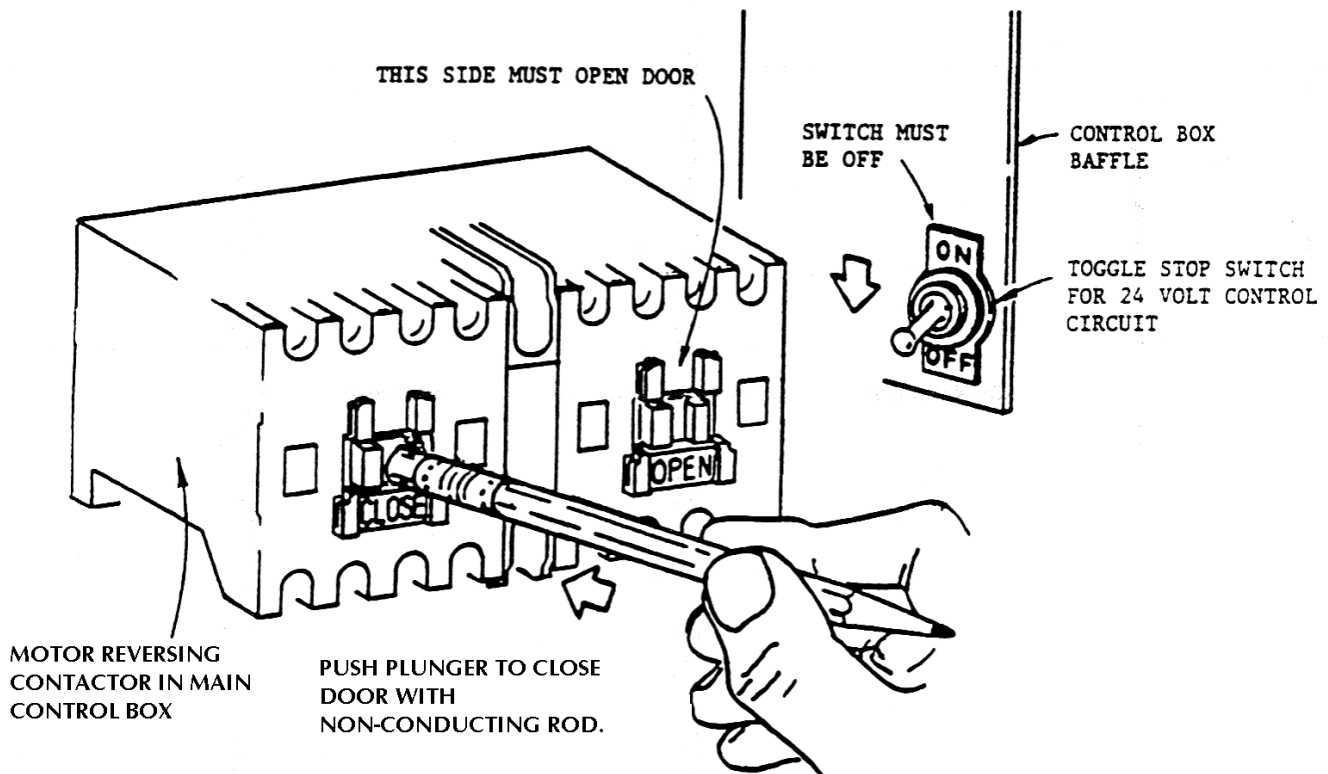
CHECK MOTOR ROTATION: RIGHT SIDE OF MOTOR STARTER RELAY MUST OPEN DOOR. IF NOT, REVERSE ANY TWO (2) LEADS ABOVE. THIS WILL CORRECT PROBLEM. SEE PAGE 14.

CAUTION: DO NOT OPERATE DOOR UNTIL ELECTRIC CHECK-OUT IS MADE, SEE PAGE 14.

CONNECT MAIN POWER SUPPLY

TEST OPERATION UNDER POWER

- A. ENGAGE DOOR TO DRIVE LINK BEFORE MAKING ELECTRICAL CONNECTIONS OUTLINE BELOW:
- B. WARNING: MAKE SURE TOGGLE STOP SWITCH IS IN OFF POSITION.
- C. TURN ON MAIN POWER SUPPLY TO DOOR OPERATOR.
- D. CHECK MOTOR ROTATION: (3 PHASE ONLY) 1-PHASE PROCEED TO STEP 3 STEPS:
 1. MOMENTARILY DEPRESS LEFT SIDE OF STARTER RELAY INSIDE MAIN CONTROL PANEL WHILE OBSERVING DOOR, DOOR MUST CLOSE.
 2. DOOR TRAVEL:
 - A. IF DOOR RUNS CLOSE PROCEED TO STEP NO. 3.
 - B. IF DOOR OPENS YOU HAVE REVERSE ROTATION OF MOTOR. TO CORRECT, TURN OFF MAIN POWER SUPPLY AND REVERSE ANY TWO (2) LEADS OF INCOMING POWER SUPPLY. CHECK BY REPEATING STEP #1 ABOVE.
 3. AFTER CHECKING MOTOR ROTATION - TURN STOP SWITCH TO ON POSITION.



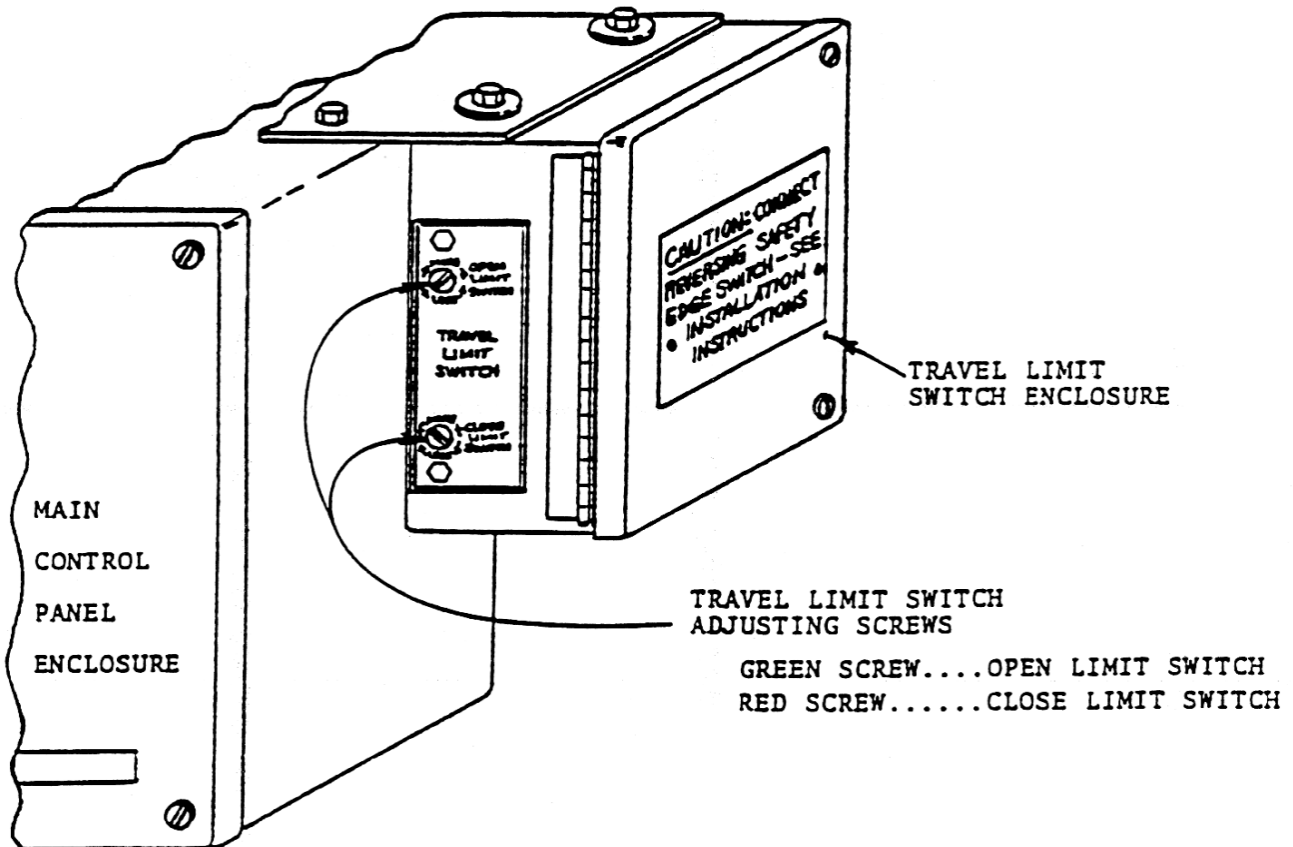
CAUTION: IF TEMPORARY ELECTRICAL HOOK-UP IS MADE, MAKE SURE MOTOR ROTATION IS NOT CHANGED WHEN PERMANENT POWER IS CONNECTED.

TEST OPERATION UNDER POWER

TO ADJUST TRAVEL LIMIT SWITCH

STEPS:

1. OPERATE DOOR MANUALLY FIRST. IF DOOR IS NOT ROLLING SMOOTHLY ON TRACK OR IS BINDING: RESOLVE PROBLEM THEN PROCEED WITH STEP NUMBER 2.
2. OPERATE DOOR UNDER POWER TO DETERMINE AMOUNT OF OVER-TRAVEL OR UNDER-TRAVEL, IF ANY. MAKE PROPER LIMIT SWITCH ADJUSTMENT PER INSTRUCTIONS ON OUTSIDE LABEL OF ENCLOSURE, SEE DRAWING BELOW. SCREW DRIVER TYPE ADJUSTMENT CAN BE MADE WITHOUT REMOVING ENCLOSURE COVER AS SHOWN. START WITH NO MORE THAN 1/4 TURN.....THEN PRECEDE UNTIL PROPER TRAVEL IS ACHIEVED. ADJUSTMENT SHOULD BE SUCH THAT DOOR WILL COAST TO A FULL OPEN OR CLOSED POSITION WITHOUT SLAMMING INTO DOOR STOPS.



TRAVEL LIMIT SWITCH ADJUSTMENT

TEST OPERATION UNDER POWER:

1. THOROUGHLY TEST DOOR FOLLOWING "INSTRUCTIONS FOR OPERATION".

a. IF THE DOOR IS NOT FUNCTIONING PROPERLY,
CAREFULLY RECHECK THE INSTALLATION PROCEDURE.

b. IF YOU CANNOT RESOLVE THE DIFFICULTY, CALL "SERVICE
ENGINEER" AT HAGERSTOWN, MARYLAND. 1-800-532-3667
OR MD PHONE (301) 733-3100.

HAVE ALL INSTRUCTIONS IN FRONT OF YOU.

IMPORTANT: IN ALL COMMUNICATIONS, PLEASE STATE THE DOOR
"MODEL NUMBER", "SERIAL NUMBER" AND "SERIES LETTER" FOUND
ON THE FRONT OF THE CONTROL PANEL.

MODEL No. <input type="text"/>	
SERIAL No. <input type="text"/>	SERIES <input type="text"/>
POWER OPERATOR DATA <input type="text"/> VOLTS AC	
PHASE <input type="text"/>	HZ <input type="text"/> AMPS <input type="text"/>
RATING <input type="text"/> FOOT LBS. PER SECOND	
24 VOLT CONTROL CIRCUIT	
FROSTOP DATA: 120 VOLTS A.C.	
TOTAL AMPS <input type="text"/>	TOTAL WATTS <input type="text"/>
JAMISON DOOR COMPANY P.O. BOX 70 HAGERSTOWN, MARYLAND 21741	

MASTER LABEL PLATE ON FRONT OF CONTROL PANEL

1. POWER OPERATION: (POWER MUST BE ON AND DRIVE LINK IN CHAIN LOCK ASSEMBLY.)

(a) TO OPEN:

1. WHEN DOOR IS CLOSED, PULL CORD ON "REMOTE CONTROL SWITCH."
2. WHEN DOOR IS IN MOTION CLOSING, CONTACT "SAFETY EDGE" UNDER DOOR.
(CONTACTING "SAFETY EDGE" WILL ALSO OPEN DOOR IF FULLY CLOSED).

CAUTION:

A QUICK (LIGHTENING LIKE) CONTACT WITH THE "SAFETY EDGE" WILL STOP THE DOOR. IF THIS HAPPENS THE "SAFETY EDGE" MUST BE GIVEN A FIRM CONTACT TO REACTIVATE THE CIRCUIT. UNTIL CIRCUIT IS REACTIVATED, DOOR CANNOT BE OPERATED BY REMOTE PULL SWITCH.

(b) TO CLOSE:

WHEN DOOR IS OPEN, PULL CORD ON "REMOTE CONTROL SWITCH".

2. MANUAL OPERATION: (IF POWER FAILS)

FROM FRONT OF DOOR: (STANDARD)

PULL DOWN ON PULL RING TO MANUALLY RELEASE DOOR AND LIFT UP ON DOOR PULL SIMULTANEOUSLY. THIS WILL MANUALLY DISCONNECT DOOR FROM POWER DRIVE CHAIN AT CHAIN LOCK ASSEMBLY. RAISE DOOR WITH DOOR PULL AS NECESSARY.

IF DRIVE CHAIN FAILS TO PICK UP DOOR, PULL DOOR TO "PARTIALLY OPEN POSITION" AND AGAIN OPERATE BY "REMOTE PULL SWITCH".

DRIVE PICK-UP LINK MAY MOVE AWAY FROM DOOR ON FIRST PULL OF SWITCH. ALLOW TIME FOR CHAIN TO GO "FULLY OPEN" AND "FULLY CLOSED".

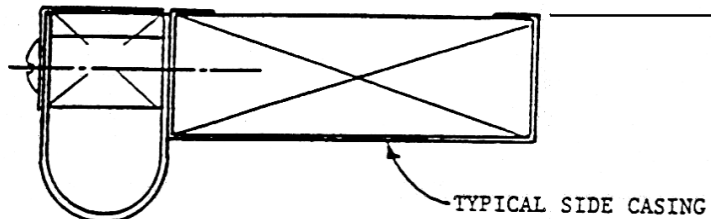
3. OPERATED DOORS BY POWER: (MANUAL OPERATION SHOULD ONLY BE USED WHEN NECESSARY)

CAUTION: IF YOU PULL CORD ON REMOTE CONTROL SWITCH AND MOTOR RUNS BUT DOORS DO NOT OPEN, CHECK FOR THE FOLLOWING.

- (a) SOMETHING MAY BE WEDGED UNDER OR BEHIND DOOR.
- (b) DOOR IS NOT ENGAGED WITH LINK IN MAIN DRIVE CHAIN.

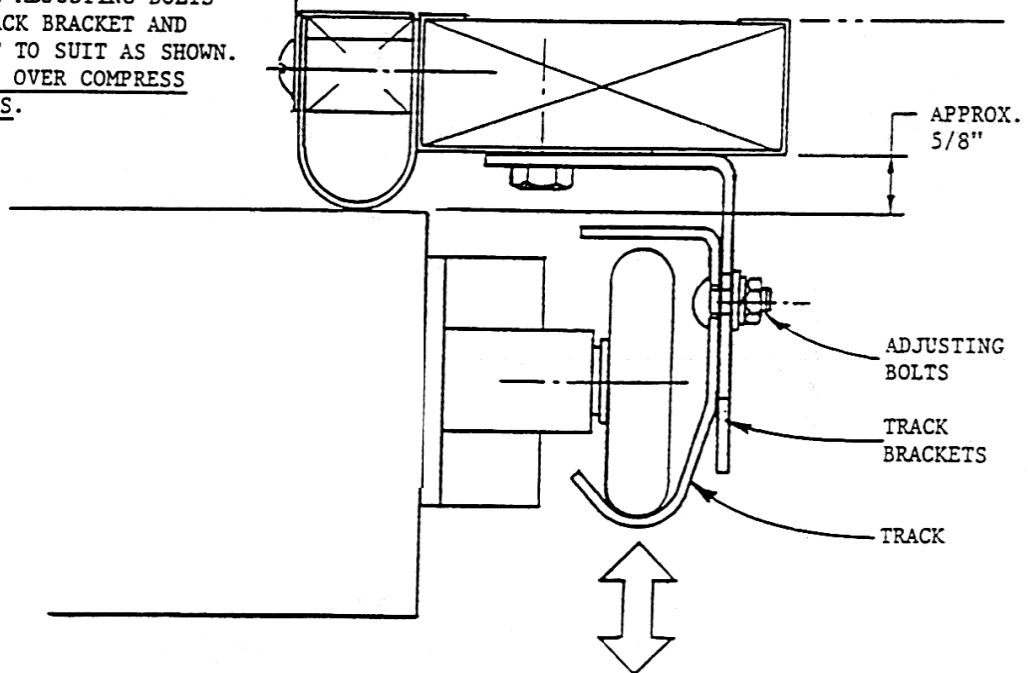
HOW TO ADJUST

1. TURN OFF POWER TO OPERATOR.
2. MOVE DOOR TO OPEN POSITION. LOOSEN GASKET ATTACHMENT SCREWS, PULL OUT GASKET AS REQUIRED TO OBTAIN A GOOD GASKET SEAL (APPROX. 1/8" COMPRESSION). DO NOT OVER COMPRESS GASKETS.
3. RETIGHTEN ATTACHMENT SCREWS.
4. CHECK FOR PROPER SEAL.



1 - SEALING GASKET ADJUSTMENT

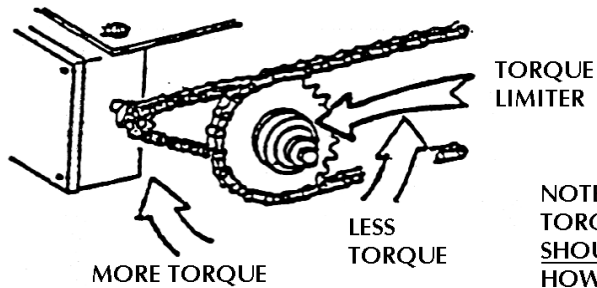
1. TURN OFF POWER TO OPERATOR.
2. LOOSEN ADJUSTING BOLTS IN TRACK BRACKET AND ADJUST TO SUIT AS SHOWN. DO NOT OVER COMPRESS GASKETS.



SEALING GASKET AND TRACK ADJUSTMENT

TORQUE LIMITER ADJUSTMENT

TORQUE LIMITER IS LOCATED ON OUTPUT SPROCKET OF GEAR REDUCER

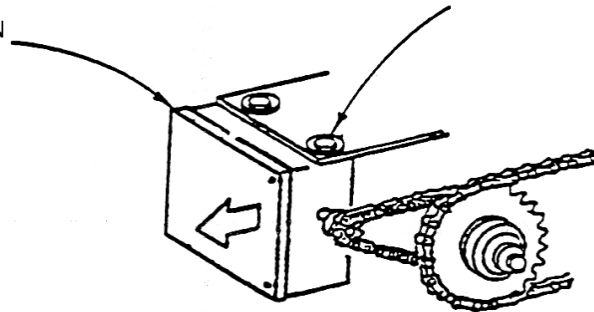


NOTE:
TORQUE LIMITER IS PRE-SET AT FACTORY AND SHOULD NOT NEED ADJUSTMENT.
HOWEVER, IF NECESSARY, SEE DRAWING AT LEFT FOR MORE OR LESS TORQUE FOR POWER UNIT DRIVING FORCE.

TRAVEL LIMIT SWITCH CHAIN ADJUSTMENT

MOVE LIMIT SWITCH ENCLOSURE TO TIGHTEN LIMIT SWITCH CHAIN. DO NOT ALLOW CHAIN TO SAG.

LOOSEN BOLTS TO ADJUST CHAIN AND RE-TIGHTEN.

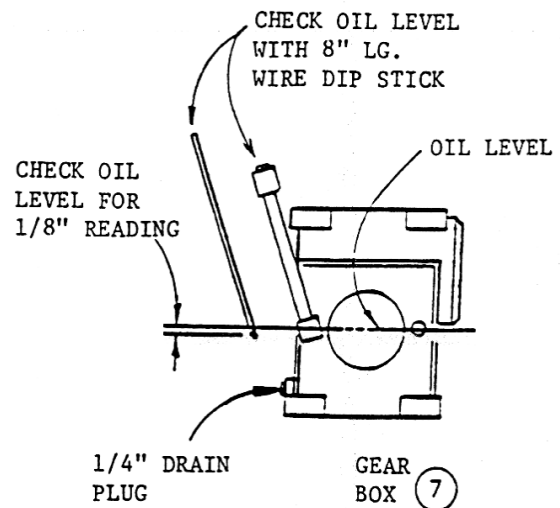
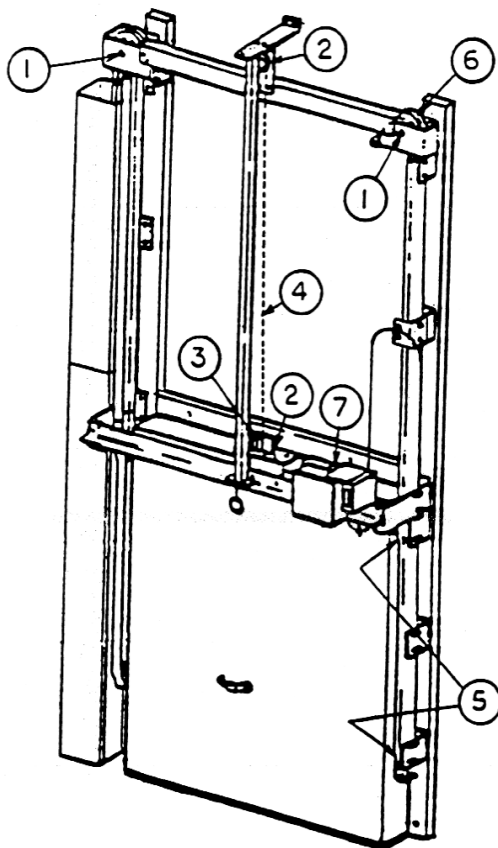


CHAIN IS ADJUSTED AT THE FACTORY AND SHOULD NOT REQUIRE ADJUSTMENT. HOWEVER, IF NECESSARY, SEE DRAWING ABOVE FOR ADJUSTMENT.

DRIVE CHAIN ADJUSTMENT

SEE PAGE 9 AND MAKE DRIVE CHAIN ADJUSTMENT AS OUTLINED IN STEP 3. DO NOT OVERTIGHTEN.

DOOR DRIVE CHAIN AND TRAVEL LIMIT SWITCH CHAIN ADJUSTMENTS



LUBRICATION INSTRUCTIONS

LUBRICATE AT 3 MONTH INTERVALS

GREASE - TO BE GOOD GRADE OF LITHIUM BASE GREASE

OIL --- TO BE GOOD GRADE OF S.A.E. 30 NON-DETERGENT MOTOR OIL

- ① CABLE SHEAVES BEARINGS - GREASE
- ② SPROCKET BEARINGS - GREASE
- ③ CHAIN LOCK - GREASE
- ④ ROLLER CHAIN - OIL
- ⑤ ROLLERS - OIL
- ⑥ LIFTING CABLES - APPLY WIRE ROPE LUBRICANT
- ⑦ GEAR BOX OIL LEVEL, USE MOBIL S-H-C #626 OR EQUAL.
CHECK AT 6 MONTH INTERVALS.

NOTE: DOOR MUST ROLL FREELY WITHOUT ANY DRAG OR BINDING DURING MANUAL OPERATION CHECK.

CAUTION: PRIOR TO THE FOLLOWING ELECTRICAL CHECK-OUT, DOOR MUST BE FULL OPEN OR FULL CLOSED.

TROUBLE SHOOTING STANDARD POWER CIRCUIT AND DRIVE SYSTEM

PROBLEM	PROBABLE CAUSE	REMEDY OR CHECK
A. DOOR WILL NOT RUN	1. NO POWER TO DOOR 2. STOP SWITCH IN OFF POSITION	1. CONNECT MAIN POWER SUPPLY TO DOOR 2. TURN STOP SWITCH ON 3. CHECK WIRES #9 & #10 4. RESET OVERLOAD
B. DOOR OPENS OR CLOSES APPROX. 6" THEN STOPS	1. DEFECTIVE HOLD SWITCH ON REVERSING CONTACTOR 2. OPEN OR CLOSE LIMIT SWITCH DEFECTIVE	1. REPLACE REVERSING CONTACTOR 2. REPLACE TRAVEL LIMIT SWITCH
C. DOOR WILL NOT CLOSE, OPENS OKAY	1. DEFECTIVE REVERSING EDGE (SHORTED)	1. REPAIR OR REPLACE REVERSING EDGE ASSEMBLY AS NECESSARY
D. DOOR WILL NOT OPEN BY REVERSING EDGE	1. DEFECTIVE REVERSING EDGE 2. DROP-LOOP WIRE BROKEN	1. REPAIR OR REPLACE REVERSING EDGE ASSEMBLY AS NECESSARY 2. REPLACE DROP-LOOP WIRE
E. 3-PHASE POWERTRON UNITS, DOOR TRAVELS IN WRONG DIRECTION-DOOR CLOSES BY REVERSING EDGE	1. CHECK MOTOR ROTATION	1. REVERSE ANY 2-LEADS OF MAIN POWER SUPPLY
F. DOOR OVERTRAVELS OR UNDERTRAVELS	1. TRAVEL LIMIT SWITCH ADJUSTMENT	1. RE-ADJUST SO DOOR COASTS INTO DESIRED POSITION
G. POWER UNIT RUNS (WILL NOT MOVE DOOR) AND MOTOR RUNNING LIGHT IS ON	1. BINDING IN DRIVE 2. TORQUE LIMITER	1. TURN OFF POWER, CHECK DOOR MANUALLY 2. TURN OFF POWER, THEN TIGHTEN TORQUE LIMITER SO DOOR WILL RUN SMOOTHLY WITHOUT A JERKY OPERATION