

Dynamicroll

high-speed doors
are fast, self repairing,
and completely safe.

Standard speed for most common sizes is up to 100" per second. At the heart of the Dynamicroll door design is our innovative curtain edge that firmly holds the curtain into the self lubricating polyethylene track mounted to the side frame. If impacted, the curtain releases from the side guide and automatically resets on the next door cycle. Since there are no metal parts within the curtain design, damage is kept to a minimum.

Its soft bottom edge is completely safe by the elimination of the hard rigid bottom edge common to most manufacturers. The soft edge coupled with standard photo eyes and an unroll sensor or wireless safety edge, make this high speed door completely safe.

Dynamicroll side columns and header comes standard in galvanized steel or can be ordered in stainless steel. It's modular construction and prewiring of the control panel to the motor, makes it simple and quick to install.

Technical Data

Maximum door size (W x H):

Outdoor application:	16 ft by 16 ft
Indoor application:	21 ft 3 in by 17 ft

Opening speed: up to 100 in/sec*

Closing speed: 32 in/sec

Wind load EN12424: Class:

w 118 x 118 in	4
w 197 x 197 in	3
w 276 x 197 in	2
w 315 x 315 in	1

Power supply: 208 VAC 3P
230 VAC 3P
460 VAC 3P

Frequency: 60 Hz

Drive control: Inverter

Limit positioning: Encoder

Curtain: .035 in - 35 oz/yd²

Safety edge: Wireless

Performance cycles EN 12604: 1,000,000

* (depending on door size)



Features & Benefits

Fast Up to 100" per second opening speed

Safe Soft bottom edge, no rigid bottom beam

Breakaway Curtain releases from the side guide and automatically resets

Low Maintenance Self-lubricating track, no rigid parts within curtain to get damaged

Easy to Install Simple modular design and prewired control panel to motor

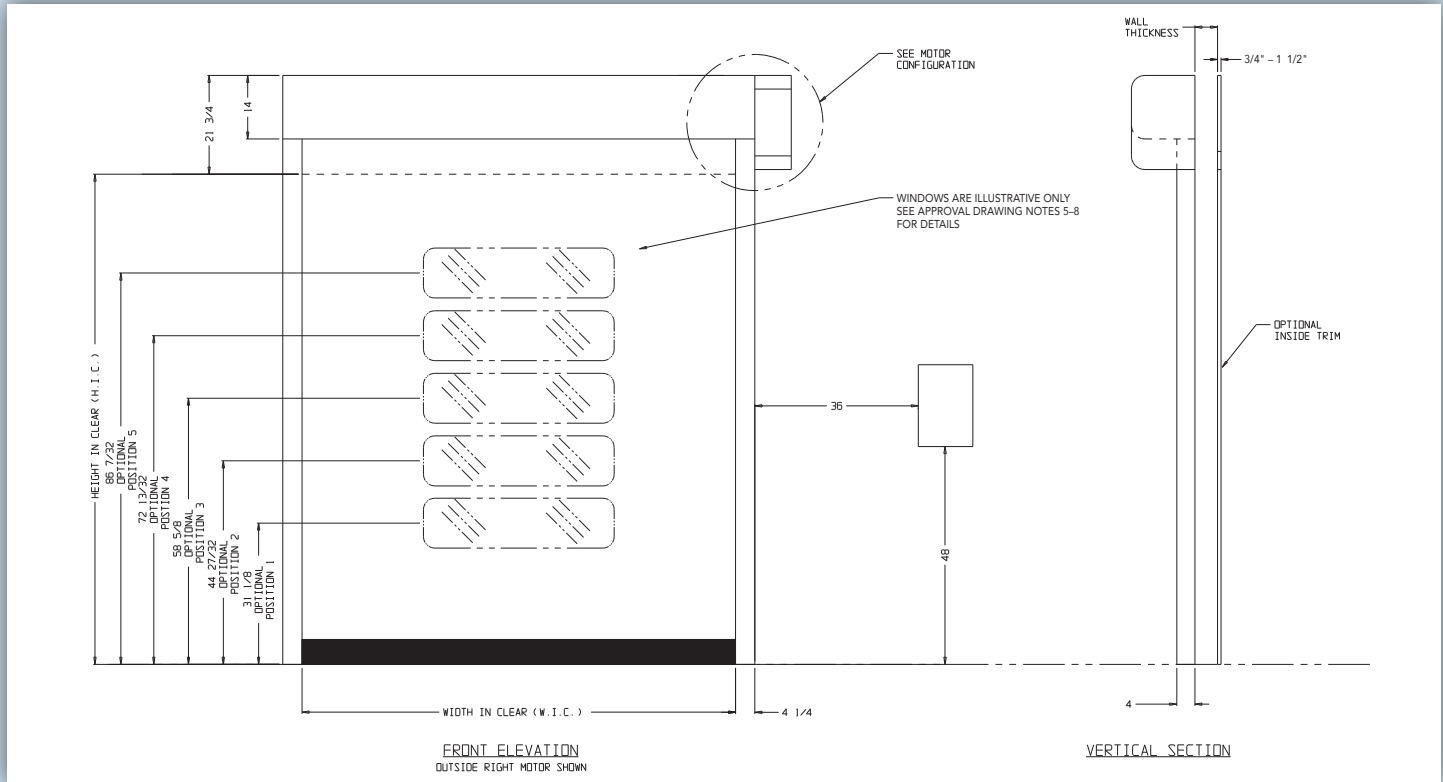
Quick Lead Times

Proven Reliable Design



JAMISON BMP®

Technical Data

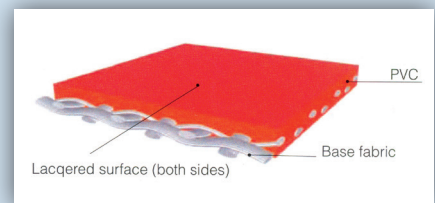


TYPE OF COATING AND FINISH

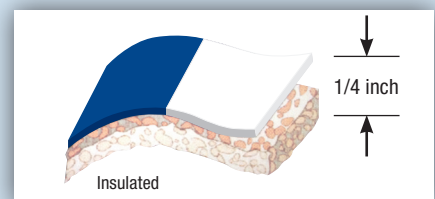
Type of Coating	PVC		
Finish	both sides laquered		
Flame spread	ISO 3795 < 3.94 in/min		
Total weight	35 / 38	oz/yd ²	DIN EN ISO 2286-2
Tensile strength warp/weft	491 / 457	lb/in	DIN EN ISO 1421/V1
Tear strength warp/weft	112 / 112	lb	DIN 53363
Adhesion	11.4	lb/in	LB 3.04-1
Cold resistance	-40	°F	DIN EN 1876-1
High temperature	158	°F	LB 3.15
Light fastness	>6	Note, Value	DIN EN ISO 105 B02
Crack resistance	no cracks	100000	DIN 53359 A

BASE FABRIC

Material	PES		DIN ISO 2076
Yarn count	1100	dtex	DIN ISO 2060
Weave	P2/2		
Remarks	complies with DIN EN 12641-2		



AVAILABLE CLOTH COLORS .035 in/35 oz/yd



AVAILABLE COLORS



Jamison Door Company • P.O. Box 70 • Hagerstown, MD 21741-0070
TOLL FREE: 1-800-532-3667 or 301-733-3100 • FAX: 240-329-5155
INTERNET: <http://www.jamisondoor.com>
E-MAIL: contact@jamisondoor.com