

**JAMISON**

*It's not just  
the door.  
It's what's  
behind it.*

## *Product Overview*

*After more than 110 years, we  
know a thing or two about  
making a superior door.*



Jamison Door® | 55 JV Jamison Drive | Hagerstown, MD 21740  
☎ 1-800-JDC-DOOR (1-800-532-3667) | [www.jamisondoor.com](http://www.jamisondoor.com)

**JAMISON**

# *When you buy Jamison, you buy more than a door.*

You buy the expertise and experience of a company with demonstrated leadership in the design and manufacture of doors for all types of environments. Our involvement dates back a century and has produced innovative solutions for every cooler and freezer requirement.

Our strong commitment to research and development, our engineering know-how, and our highly-skilled workforce enable us to successfully handle projects of any size or complexity. As a result, Jamison Doors are chosen most often throughout the food, pharmaceutical, and all other temperature-controlled industries.

**JAMISON** DOOR®

**JAMISON** JAMOTUF®

**JAMISON** BMP®

**JAMISON** HCR®

*The world leader in  
cold storage doors.*







# Overview

## Why Customers Choose Jamison

Since 1906, Jamison Door Company has pioneered the cold storage door industry in unsurpassed product quality, customer service, and technical support for our customers. We look forward to taking our long history of quality products into another century with you, our valued customer. We've worked hard to earn our reputation as the industry leader, and we're totally committed to 100% customer satisfaction.

Our products, service, and warranty are the strongest in the industry. Our entire customer service team, engineering department, and management staff will always be available to assure your complete satisfaction. If you have a concern or question related to your Jamison product, simply call us at 800.532.3667. We will find the right solution that meets your needs.

- ➔ Each door is engineered for your application
- ➔ Hand-constructed framing and quality hardware for a longer door life
- ➔ Special focus on gasket materials, design, and ease of installation
- ➔ Patented low friction Diamond-Trac System® making even large doors easy to move
- ➔ 5-year limited warranty on all Mark IV® Doors and Plyfoam® Doors

# Cold Storage Doors Overview

At Jamison, we're proud to be a million doors and counting. Our unwavering standards for quality, workmanship and service have made ours the most sought-after cold storage door in the industry. We are the last of the manufacturers to still design and build our own power operators. The Powertron Operator is the most popular operator in the history of cold storage doors. Manufacturing state-of-the-art solutions to unique cooler and freezer applications has been our passion for over 110 years. Whether they are sliding, swinging, bi-folding or overhead, or hittable, clear panel, stainless steel or molded plastic, our doors are extremely versatile with design configurations for any type of cold storage environment.

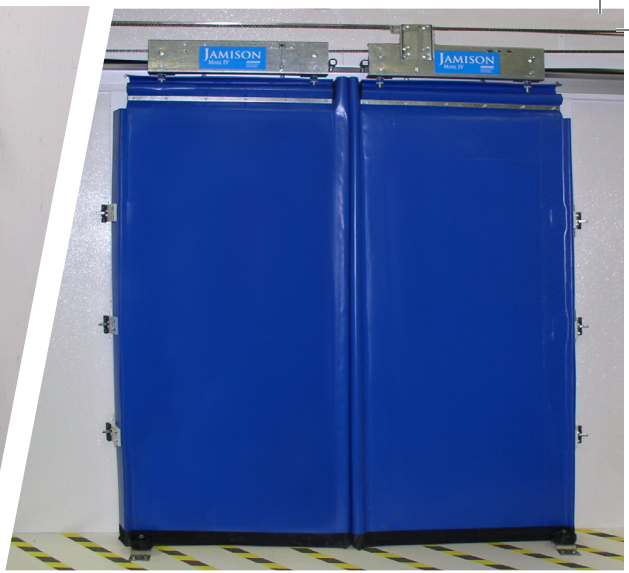
## Features

- ➔ Power-operated or manually-operated
- ➔ The most popular power operator
- ➔ Superior sealing ability of our Diamond-Trac<sup>®</sup> Roller System
- ➔ Padlockable safety release latches and optional kick plates for added protection of swing doors
- ➔ 5-year limited warranty

*DOE Compliance: We have had our doors tested by a third party lab to determine thermal performance and can be made compliant.*







*THE WORLD LEADER IN  
COLD STORAGE DOORS.*



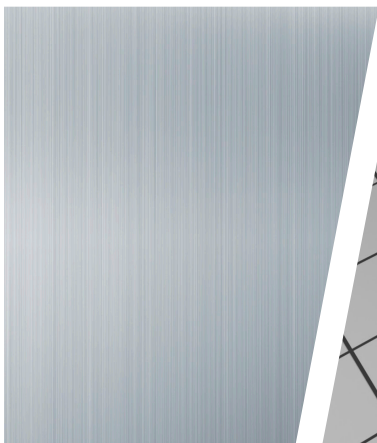
**Jamotuf**

# Fiberglass Architectural Style Doors & Frames

Jamison Door Company introduced their first fiberglass door with the manufacture of the Jamolite product line in 1958. Now with nearly 60 years of experience creating and perfecting fiberglass doors, Jamison has introduced its subsidiary company, Jamotuf, LLC, specializing in 1-3/4" thick fiberglass doors with fiberglass frame options. The smooth gloss gelcoat surface is exceptionally clean, non-porous, and non-absorptive. Jamotuf doors are durable, low maintenance, and have a lifetime corrosion warranty.

## ***Jamotuf – Jamocor Features***

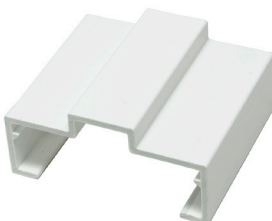
- ➔ Monolithic molded construction for a true seamless impermeable outer shell
- ➔ Molecular crosslinking of all six sides of the door ensures integrity of the seamless design
- ➔ Outer shell is press-molded to composite core materials for a variety of applications and designs
- ➔ A wide range of hardware preps or Grade 1 hardware accessories
- ➔ Installation of factory-supplied finish hardware available







*PROVIDING PEACE OF MIND  
IN THE MOST DEMANDING  
ENVIRONMENTS.*



# *BMP High Speed Fabric and Rollup Doors*

Jamison has partnered with the fastest growing performance fabric and steel door manufacturer in the world, BMP, to manufacture a broad range of industrial, retail, pharmaceutical, and food doors. Customers receive Jamison BMP's innovative dependable designs delivered by Jamison's world class engineering, manufacturing, and customer service.

## **Features**

- ➔ Fast with standard opening speeds up to 100" a second for most sizes
- ➔ Safe with a soft bottom edge as standard, unlike hard rigid bottom edges of most manufacturers
- ➔ Automatically resets for most hits due to the track reset notch positioned at the top of the opening
- ➔ Use of materials not requiring lubricated tracks
- ➔ Injection molded teeth that stay on the curtain unlike mechanically fastened teeth







*EXTREMELY FAST, EXTREMELY  
SAFE, SELF-REPAIRING*



# HCR® Air Doors Overview

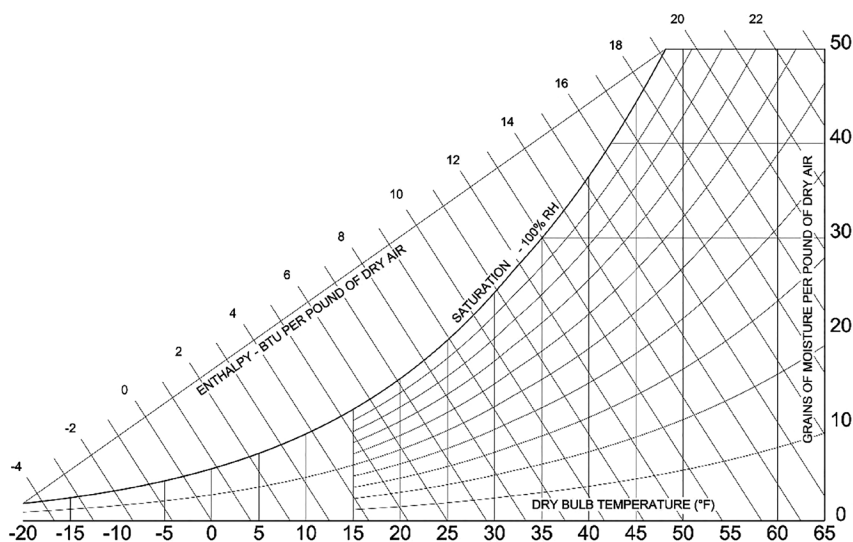
## *The World Leader in Re-Circulatory Air Door Technology*

In 1974, the founders of HCR set out to find a better solution for moving traffic through cooler and freezer doors. Using a completely fresh engineering approach and the principles of psychrometrics, the refrigeration engineers at HCR developed new technologies that pioneered the re-circulatory air door industry.

Today, with more than 40 years of field experience, HCR has gone from the drawing board to application, from a basic idea to reality and has proven itself with thousands of successful installations worldwide. HCR doors can be found inside the facilities of the largest, most demanding and cost conscious grocery and food distribution centers, food processing plants, refrigerated warehouses, and retail grocery stores. HCR is the only air door manufacturer to have independent third party test lab results to back their claims.

## *Features*

- ➔ Elimination of frost and ice
- ➔ Dramatic reduction of infiltration and exfiltration
- ➔ Majorly reduced safety concerns
- ➔ Remarkably increased productivity
- ➔ Reduced doorway maintenance costs
- ➔ Better temperature control
- ➔ Consistent temperatures maintained throughout facility
- ➔ Elimination of moving door parts







## ***Jamison History***

It's no accident that the company known for the best cold storage and specialty doors around is made up of highly skilled engineers, craftsmen, factory staff and office employees who take immense pride in their work. Speaking of pride, Jamison was the first company in the state of Maryland to secure a Union Stamp, and decades later, we still enjoy a successful relationship with the Carpenters and Joiners Union of America.

It doesn't stop there. The Jamison Door family also encompasses a long list of retirees, suppliers, contractors, partners, product enthusiasts – and especially customers – who have made us what we are today. From the bottom of our hearts, we thank you for putting your faith in us.

## ***Our Locations***

### **Jamison Door®**

55 JV Jamison Drive  
Hagerstown, MD 21740  
1-800-532-3667

### **Jamison BMP®**

9449 Earley Drive  
Hagerstown, MD 21740  
1-800-532-3667

### **Jamison Jamotuf®**

10302 Partnership Court  
Williamsport, MD 21795  
1-800-532-3667

### **Jamison HCR®**

80207 US Highway 87 West  
Lewistown, Montana 59457  
1-800-326-7700

### **Jamison Door®**

**Latinoamerica S. de R. L.**  
Av. Norte 59 # 880 - B  
Col. Industrial Vallejo  
02300 Mexico, D.F.  
(5255) 5587-5875

# **JAMISON**

📞 **1-800-JDC-DOOR (1-800-532-3667)**

[www.jamisondoor.com](http://www.jamisondoor.com)